

# IP Statistics 2022

Seiwa Patent & Law

(Tokyo, JAPAN)

May 2022

**Abstract:** This article summarizes recent statistical data in intellectual properties, such as patents, utility models, designs and trademarks, available from the Japan Patent Office (JPO), the Supreme Court of Japan (SCJ), the Intellectual Property High Court (IPHC) and WIPO, etc. This edition includes **updates based on the IPHC Annual Report 2022 Edition published in February, 2022, and the JPO Status Report 2022 Edition published in March 2022, etc.**

- The number of patent applications in 2021 was about 290,000 (+0.3% y/y). In recent years, the number of patent applications filed by non-JP residents has been slightly increasing. (p.2, Graph P1-1)
- The number of design applications and the number of trademark applications in 2021 were about 33,000 (+2.4% y/y) and about 184,000 (+2.0% y/y), respectively. For both design and trademark, the number of applications filed by non-JP residents has been increasing in recent years, the trend of which is more pronounced than that in patent. (p.9, Graph D1-1, and p.11, Graph T1-1)
- In patent infringement lawsuits disposed in 2014 to 2020, the proportion of the results in judgments and settlements in court that appear to be favorable to patentees was 45.8%, which has been gradually increasing in recent years. (p.15, Graph L3 and Table L1)

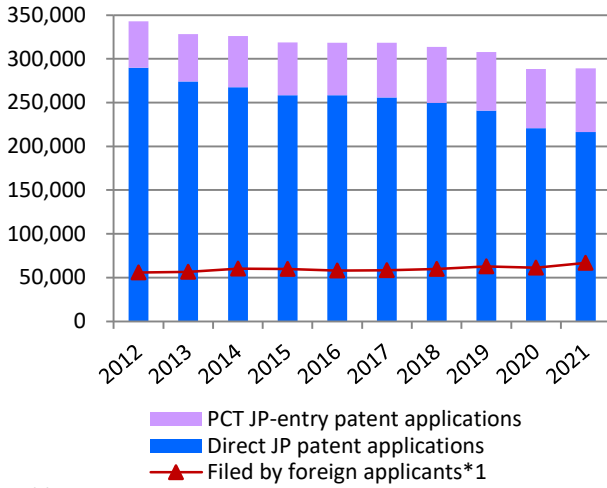
Patents	.... Page 2
Utility Models	.... Page 8
Designs	.... Page 9
Trademarks	.... Page 11
Litigation	.... Page 13

# Statistics: Patents

Updated

## Patent applications and registrations at the JPO

Graph P1-1: Patent applications at the JPO



Graph P1-2: Patent registrations at the JPO

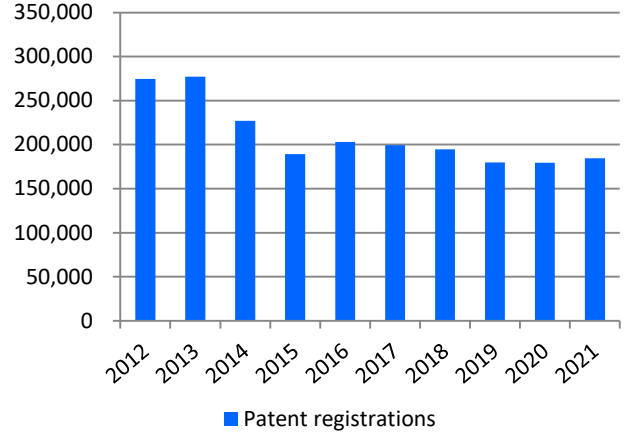


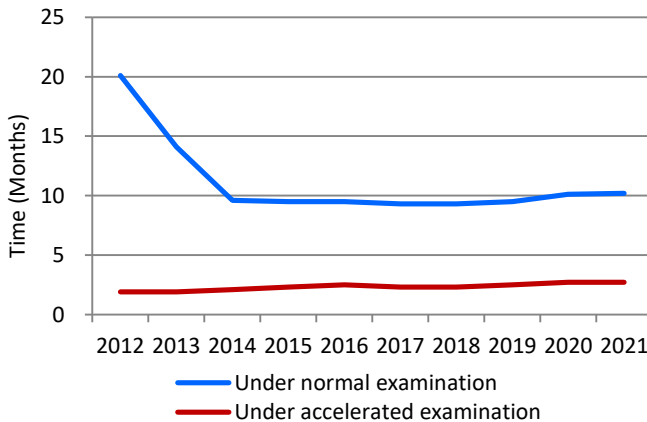
Table P1

Calendar Year	2017	2018	2019	2020	2021	y/y
JP patent applications in total	318,481	313,567	307,969	288,472	289,200	+0.3%
PCT JP-entry patent applications	62,530	64,013	66,968	67,634	72,782	+7.6%
Direct JP patent applications	255,951	249,554	241,001	220,838	216,418	-2.0%
Patent registrations	199,577	194,525	179,910	179,383	184,372	+2.8%

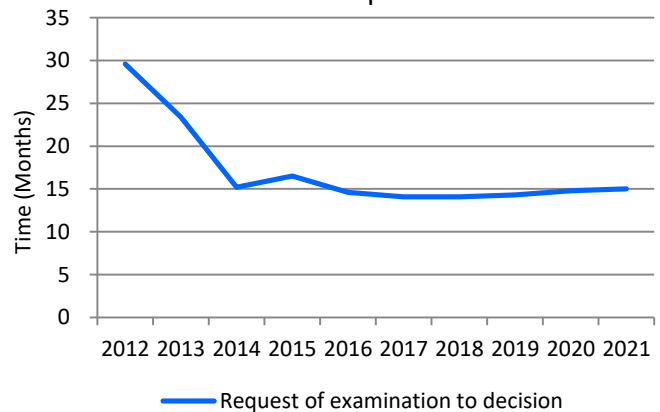
Updated

## Average time of pendency

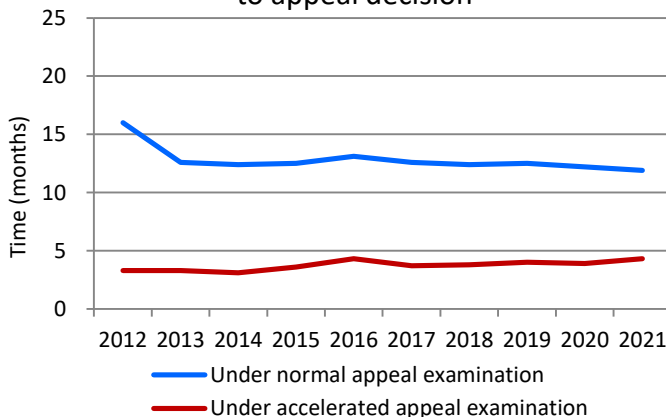
Graph P2-1: Request of examination to 1<sup>st</sup> OA



Graph P2-2: Request of examination to a final disposition\*2



Graph P2-3: Demand of appeal trial to appeal decision



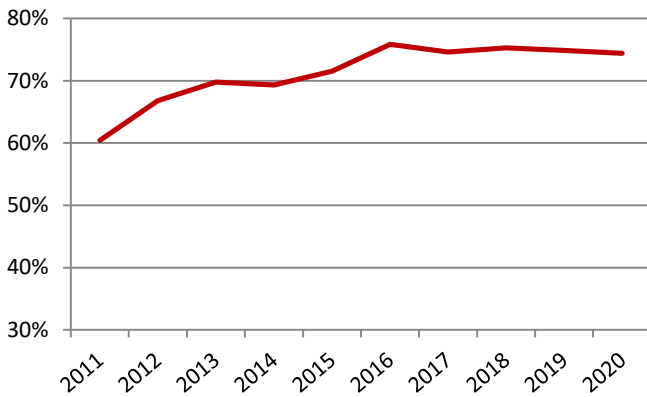
The JPO created “FA 11” campaign in 2004, aimed at reducing the time of pendency to a 1st OA to less than 11 mths, and achieved it in 2014. The JPO set the next decade goal in March 2014, which is further shortening the pendency to the first office action and the total pendency to a final disposition to less than 10 mths and less than 14 mths, respectively, by 2023.

\*1 Sum of PCT JP-entry and direct-JP patent applications filed by foreign applicants.

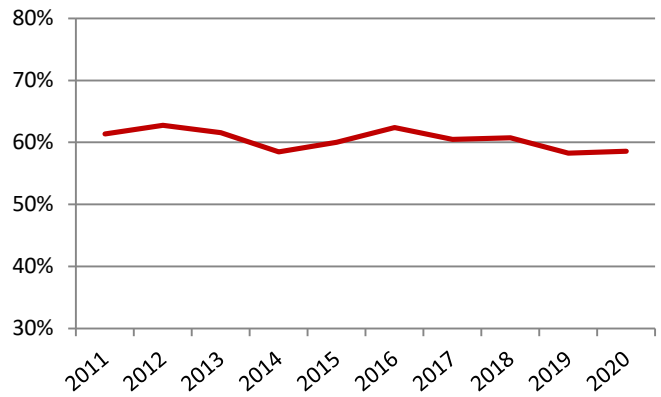
\*2 Withdrawal/Abandonment or Decision of Allowance or Decision of Rejection. Cases in which the applicant extended a response period for an Office Action are excluded.

## Grant rate at the JPO

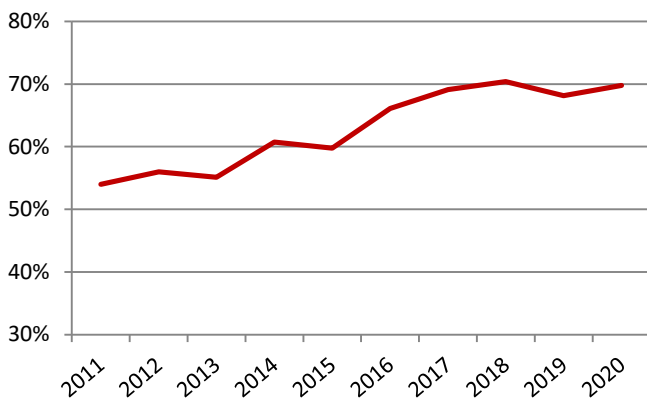
Graph P3-1: Grant rate at examination\*<sup>1</sup>



Graph P3-2: Grant rate at preappeal reexamination\*<sup>2</sup>



Graph P3-3: Grant rate at appeal\*<sup>3</sup>

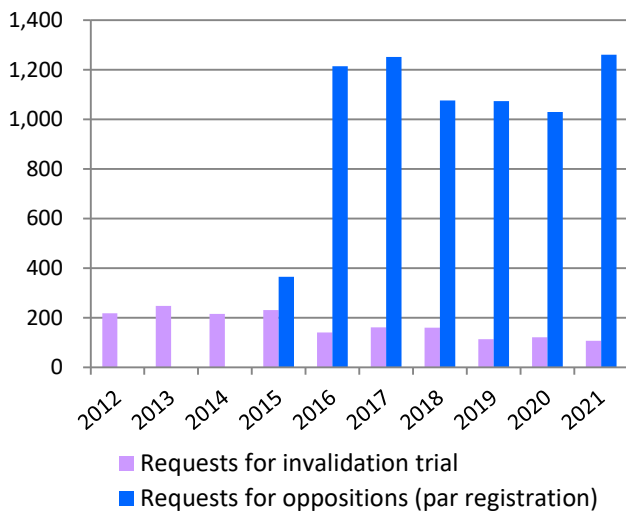


Although the number of the patent applications at the JPO is gradually decreasing, the grant rate is steadily increasing. This is based on various reasons, including changes in the IP strategies of companies from quantity to quality.

## Opposition & Invalidation Trial

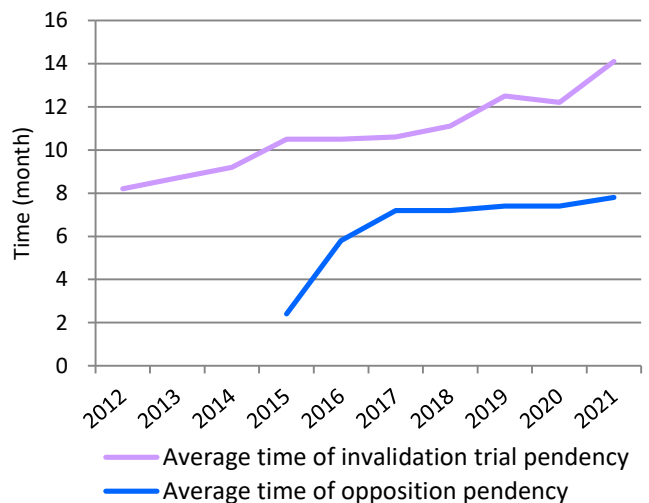
Updated

Graph P4-1: Requests for opposition & invalidation trial



Updated

Graph P4-2: Average time of pendency at opposition & invalidation trial\*<sup>4</sup>



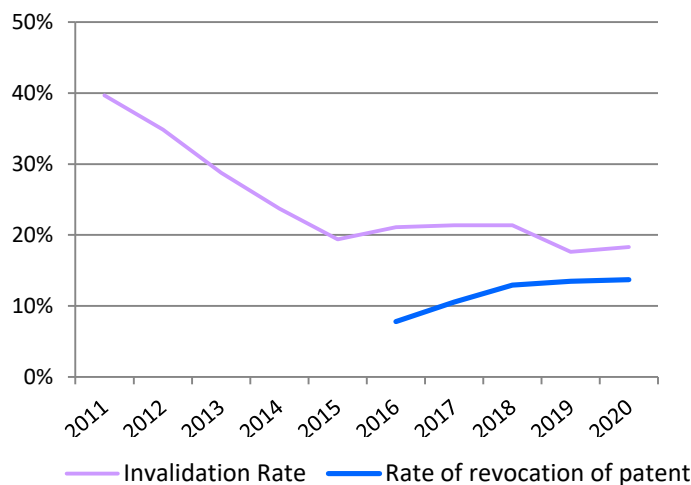
\*1 Grant rate at examination = decisions of grant at examination / (decisions of grant at examination + decisions of rejection at examination + withdrawal or abandonment after request for examination)

\*2 Grant rate at pretrial reexamination = decisions of grant at pretrial reexamination / (decisions of grant at pretrial reexamination + cases transferred to appeal + withdrawal or abandonment at pretrial reexamination)

\*3 Grant rate at appeal = appeal decisions of grant / (appeal decisions of grant + appeal decisions of rejection)

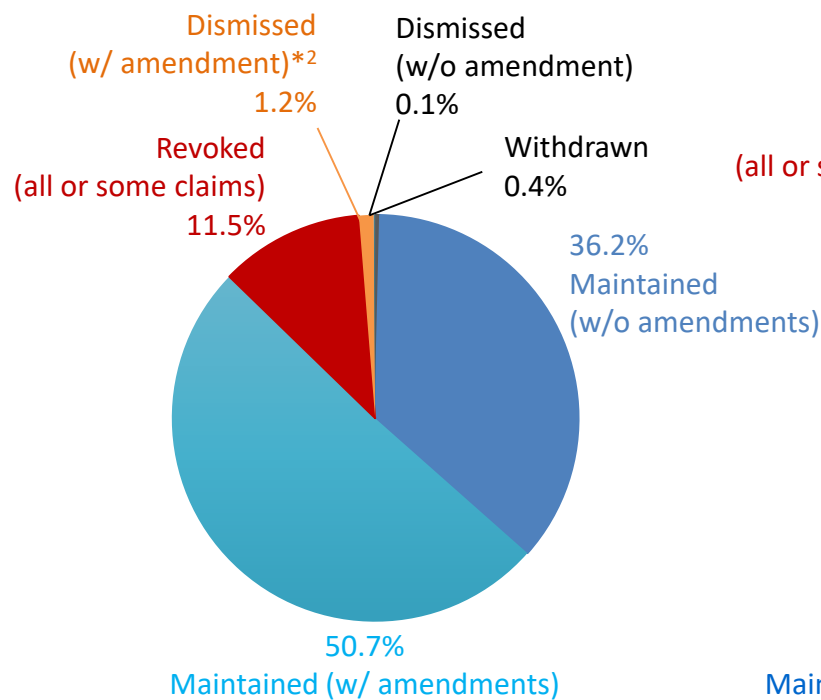
\*4 Opposition: from request to Notice of Reasons for Revocation (Advance Notice of Decision) or Decision  
Invalidation Trial: from request to Advance notice of Decision or Decision

Graph P4-3: Rate of invalidation and revocation of patent (all or some claims)\*<sup>1</sup>



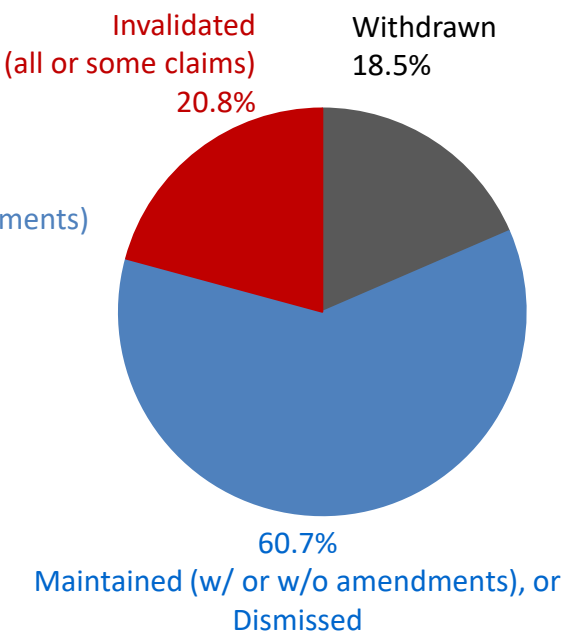
Breakdown of the Results of Oppositions & Invalidation Trials

Graph P4-4: The Results of Oppositions



Outcomes of Oppositions filed from Apr. 2015 to Dec. 2019, calculated at the end of Dec. 2019

Graph P4-5: The Results of Invalidation Trials



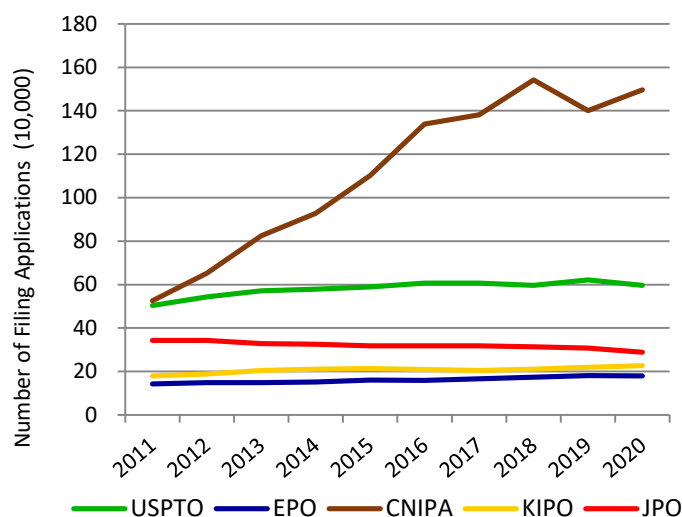
Outcomes of Invalidation Trials disposed from Jan. 2016 to Dec. 2020

\*<sup>1</sup> Rate of Invalidation of Patent (all or some claims) = Trial Decisions to Invalidate all or some claims of Patent / (Trial Decisions to Invalidate all or some claims of Patent + Trial Decisions to Maintain Patent)  
Rate of invalidation is a three-year moving average.  
Rate of Revocation of Patent (all or some claims) = Trial Decisions to Revoke all claims of Patent / (Trial Decisions to Revoke all or some claims of Patent + Trial Decisions to Maintain Patent)

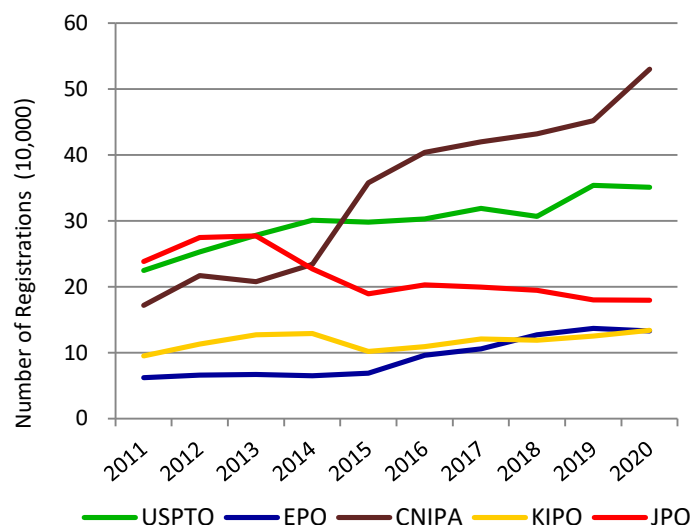
\*<sup>2</sup> Cases in which all of the claims in question were cancelled and thus which were dismissed.

# Comparison between the five IP offices

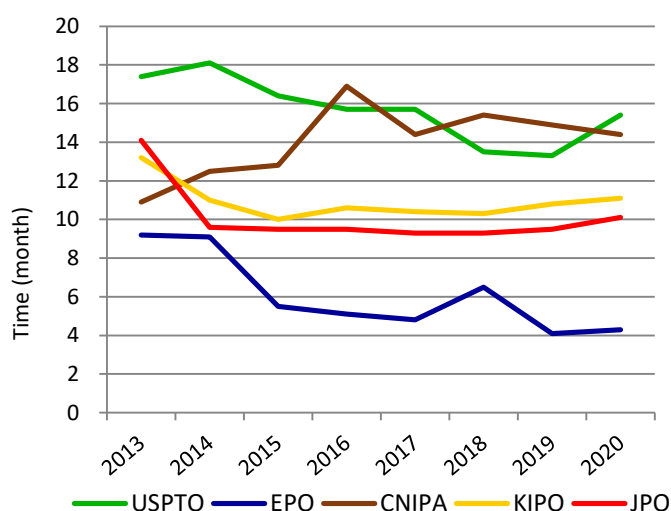
Graph P5-1: Patent applications at the five IP offices



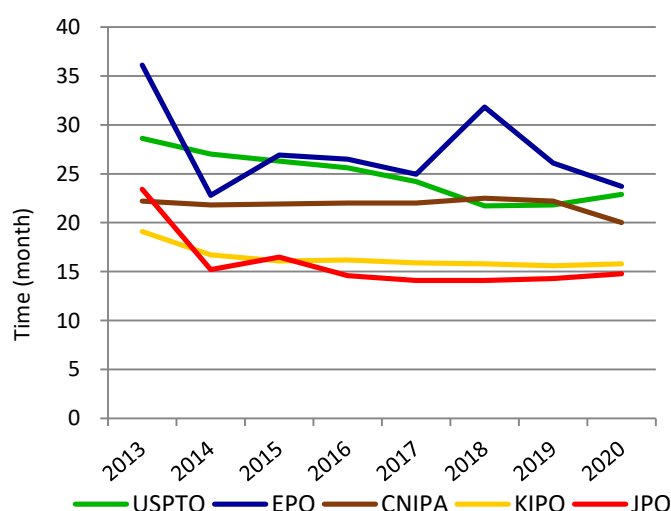
Graph P5-2: Patent registrations at the five IP offices



Graph P5-3: Average time of examination pendency to 1<sup>st</sup> OA\*<sup>1</sup>



Graph P5-4: Average time of examination pendency to disposition\*<sup>2</sup>



\*1 Average time of examination pendency to 1<sup>st</sup> OA:

JPO = average time of from requesting examination to 1<sup>st</sup> OA

USPTO = average time of from filing date to 1<sup>st</sup> OA

EPO = median time of from filing date to Extended European Search Report

KIPO = average time of from requesting examination to 1<sup>st</sup> OA

CNIPA = average time of from starting examination to 1<sup>st</sup> OA

\*2 Average time of examination pendency to decision:

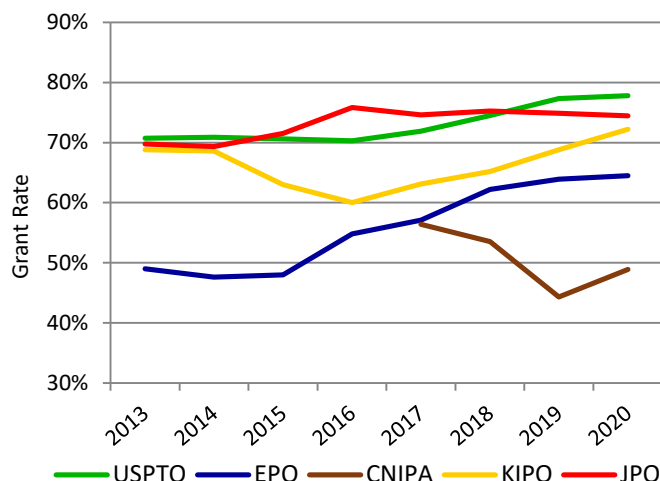
JPO = average time of from requesting examination to withdrawal, abandonment, or Decision of Allowance or Decision of Rejection

USPTO = average time of from filing date to abandonment or a final disposal (including reexamination)

EPO = median time of from starting examination to final disposal

KIPO = (total examination period of patent applications disposed in the year) / (total number of patent applications disposed in the year)

Graph P5-5: Patent grant rate at the five IP offices\*<sup>1</sup>



\*1 Grant Rate at Examination:

JPO = Decision of Grant at Examination / (Decision of Grant at Examination + Decision of Rejection at Examination + Withdrawal or Abandonment after Request for Examination)

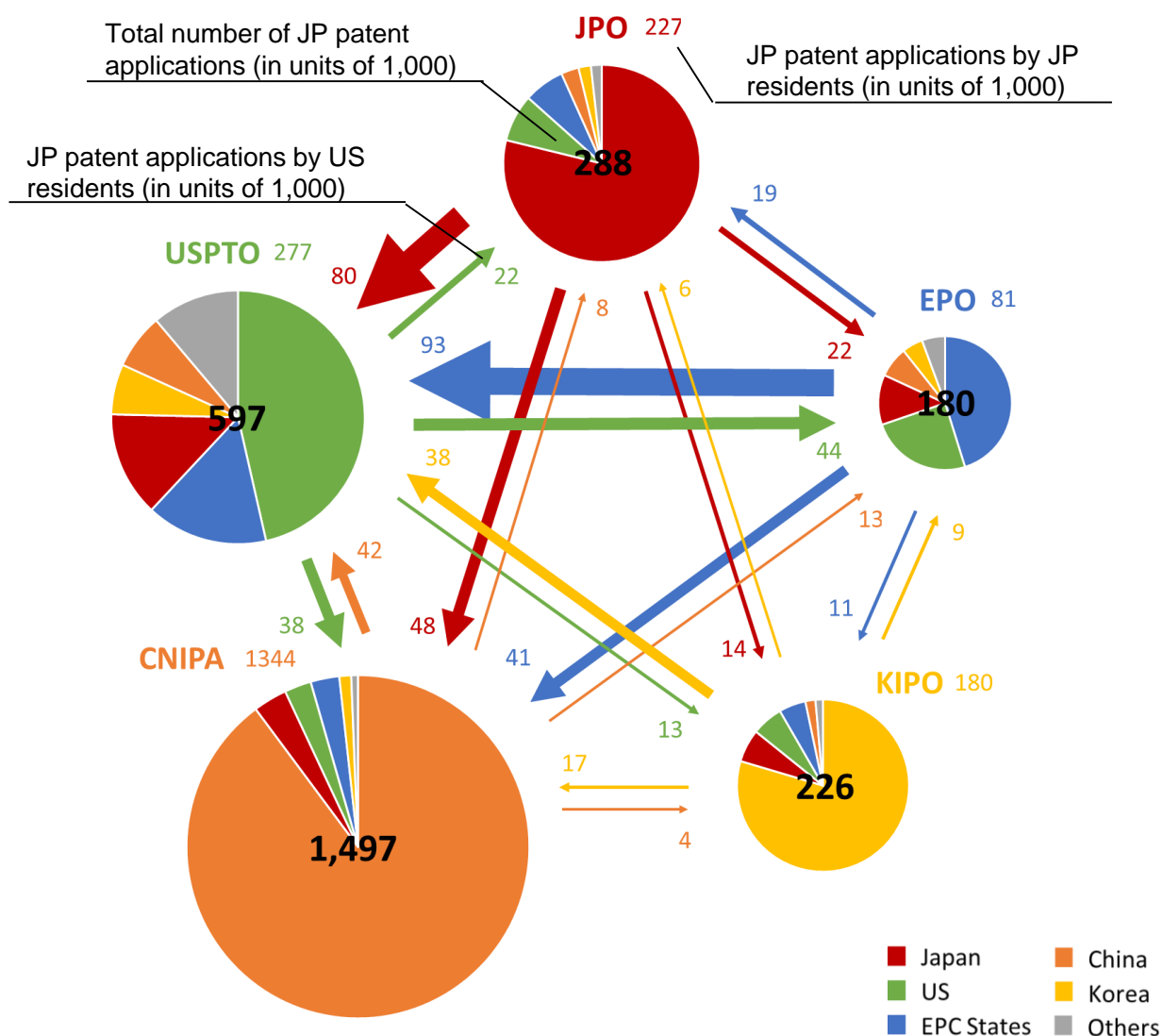
USPTO = Patent Grants / Patent Applications

EPO = Decision of Grant at Examination / (Decision of Grant at Examination + Decision of Rejection at Examination + Abandonment)

KIPO = Decision of Grant at Examination / (Decision of Grant at Examination + Decision of Rejection at Examination + Withdrawal after Request for Examination)

CNIPA does not disclose the definition of the Grant Rate at Examination.

Graph P6: Patent applications filed at the five IP offices by origin\*<sup>2</sup> (in 2020)

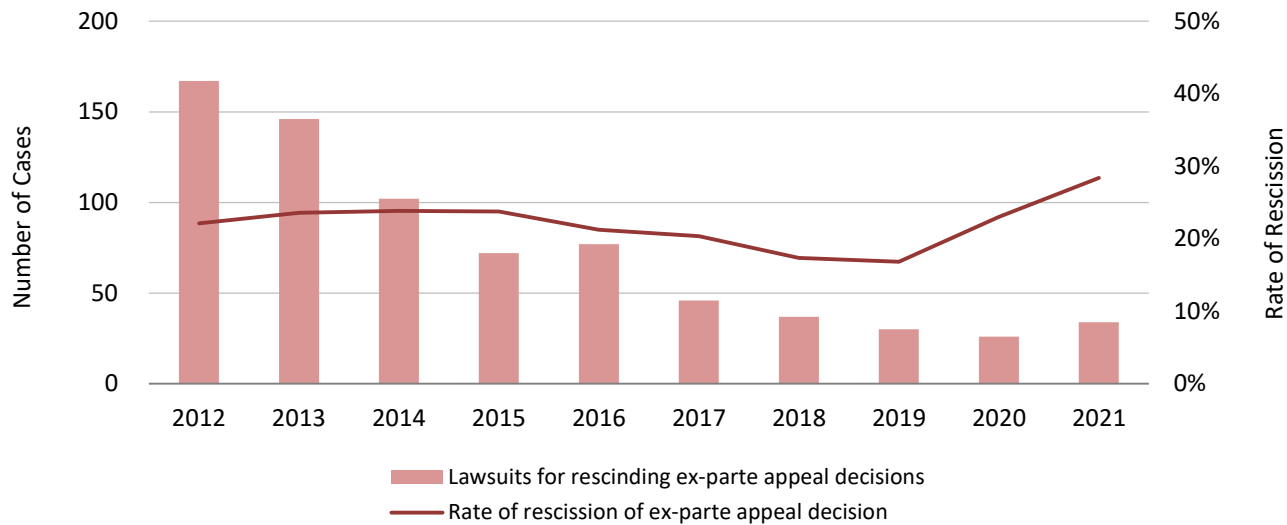


\*2 The origin is based on residence of first named applicants. The amounts were rounded down and given in units of 1,000.

# Lawsuits against the JPO’s Appeal/Trial Decisions in relation to Patent

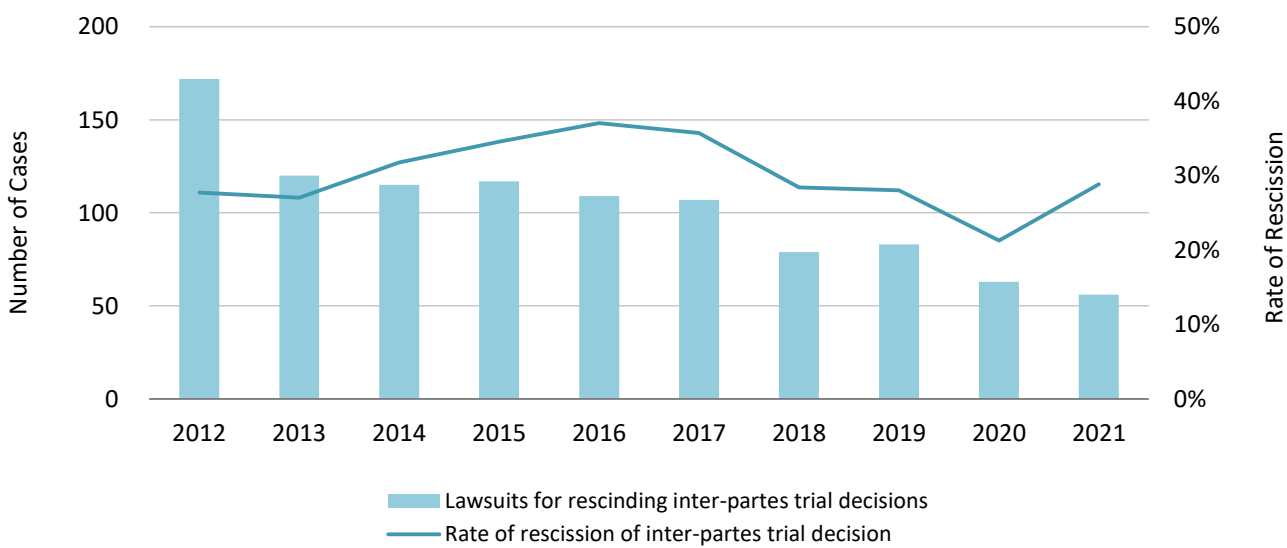
Updated

Graph P7-1: Lawsuits against *Ex-Parte* Appeal/Trial Decisions in relation to Patent Applications and their Total Rate of Rescission\*<sup>1</sup>



Updated

Graph P7-2: Lawsuits against *Inter-Partes* Appeal/Trial Decisions in relation to Patent Rights and their Total Rate of Rescission\*<sup>2</sup>



\*1 These data include lawsuits against Trial Decisions of Rejection and Dismissal of Amendment in relation to patent applications. Rate of rescission is a three-year moving average.

\*2 These data include lawsuits against Trial Decisions of Invalidation and Correction Trials in relation to patent rights. Rate of rescission is a three-year moving average.

# Statistics: Utility Models

Updated

## Utility model applications and registrations at the JPO

Graph U1-1: Utility model applications at the JPO

Graph U1-2: Utility model registrations at the JPO

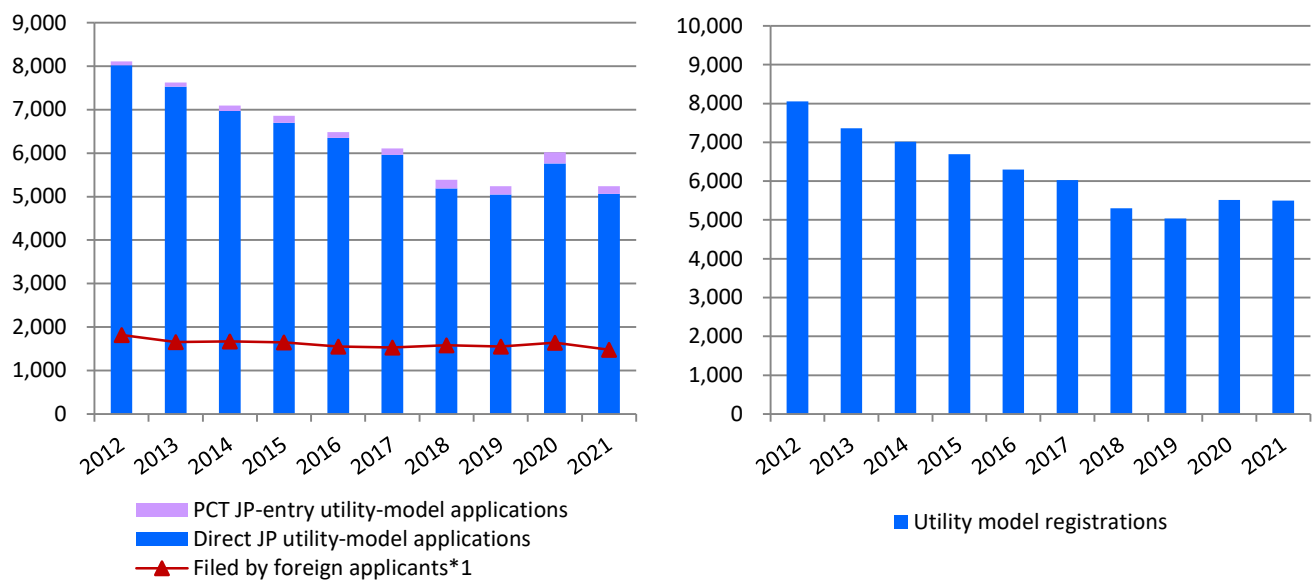


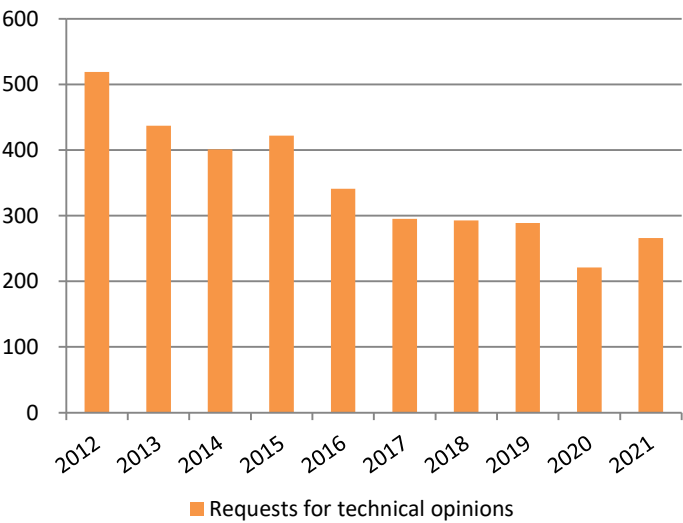
Table U1

Calendar Year	2017	2018	2019	2020	2021	y/y
JP utility-model applications in total	6,106	5,388	5,241	6,018	5,239	-12.9%
PCT JP-entry utility-model applications	144	199	191	253	180	-28.9%
Direct JP utility-model applications	5,962	5,189	5,050	5,765	5,059	-12.2%
Utility model registrations	6,024	5,303	5,033	5,518	5,499	-0.3%
Requests for technical opinions	295	293	289	221	266	+20.4%

Updated

## Requests for Technical Opinions\*2

Graph U2



\*1 Sum of PCT JP-entry and direct-JP utility-model applications filed by foreign applicants.

\*2 A utility model right owner cannot enforce its utility model right without warning an opposing party in advance with indicating a technical opinion by the examiner.

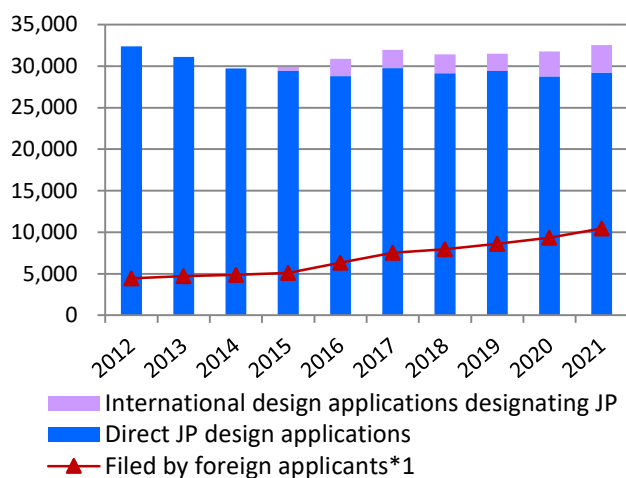


# Statistics: Designs

Updated

## Design applications and registrations at the JPO

Graph D1-1: Design applications at the JPO



Graph D2-2: Design registrations at the JPO

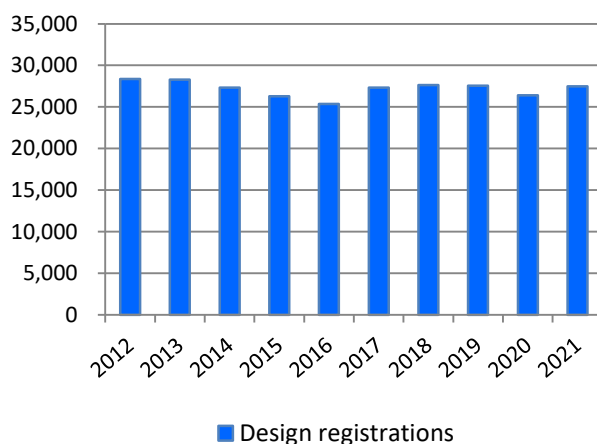


Table D1-1

	Calendar Year	2017	2018	2019	2020	2021	y/y
JP design applications in total		31,961	31,406	31,489	31,752	32,525	+2.4%
International design applications designating JP		2,216	2,261	2,072	2,986	3,303	+10.6%
Direct JP design applications		29,745	29,145	29,417	28,766	29,222	+1.6%
Design registrations		27,335	27,618	27,556	26,417	27,490	+4.1%

Updated

## The number of applications and registrations for new types of design (from April 1, 2020 to March 1, 2022)

Table D1-2

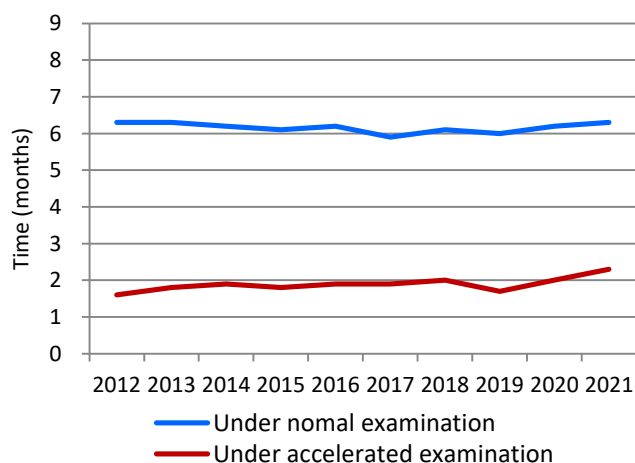
	Applications	Registrations
Graphic Images	2,304	838
Buildings	667	319
Interior Designs	461	169

It became possible to protect graphic images, buildings and interior designs from April 1, 2020. This table shows the number of applications and registrations for these new types of design from April 1, 2020 to March 1, 2022.

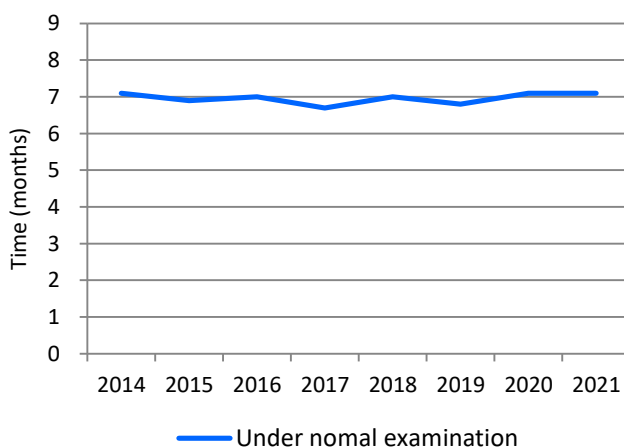
Updated

## Average time of pendency

Graph D2-1: Examination pendency to 1<sup>st</sup> OA



Graph D2-2: Design examination pendency to a final disposition\*2



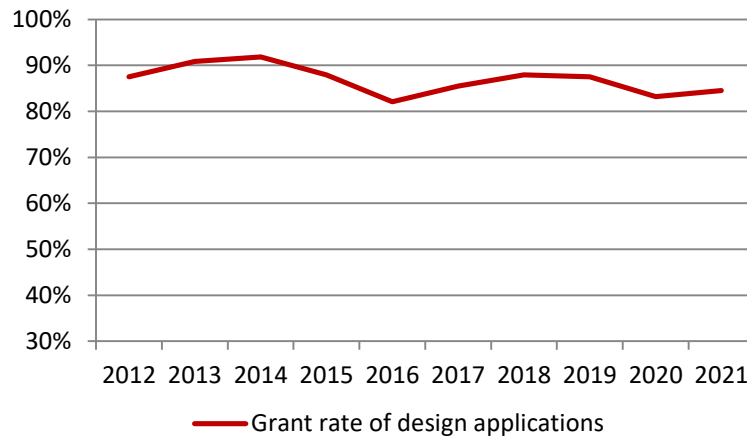
\*1 Sum of international design applications designating JP and direct-JP design applications filed by foreign applicants.

\*2 Withdrawal/Abandonment or Decision of Allowance or Decision of Rejection. Cases in which the applicant extended a response period for an Office Action are excluded.

Updated

## Grant rate at examination of design applications<sup>\*1</sup>

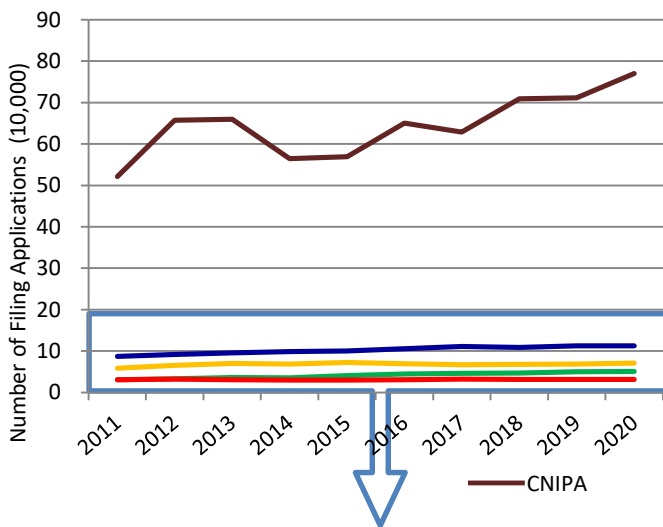
Graph D3: Design grant rate



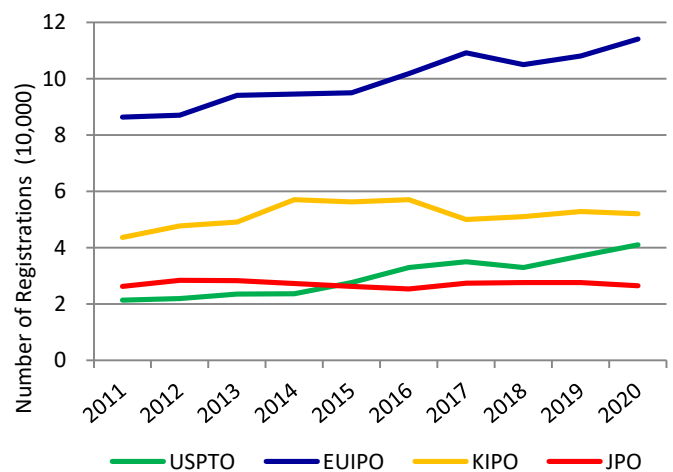
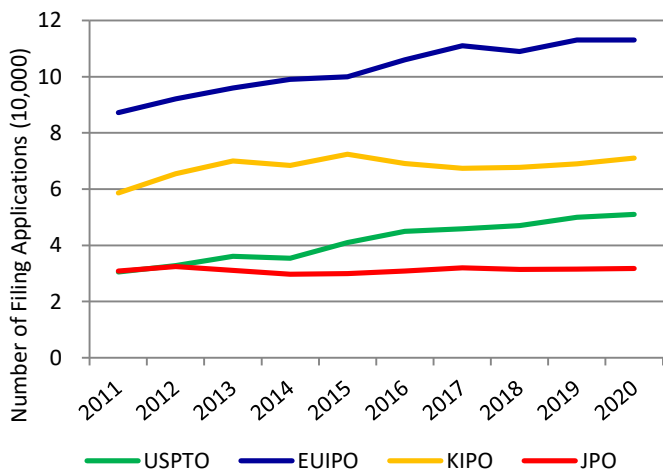
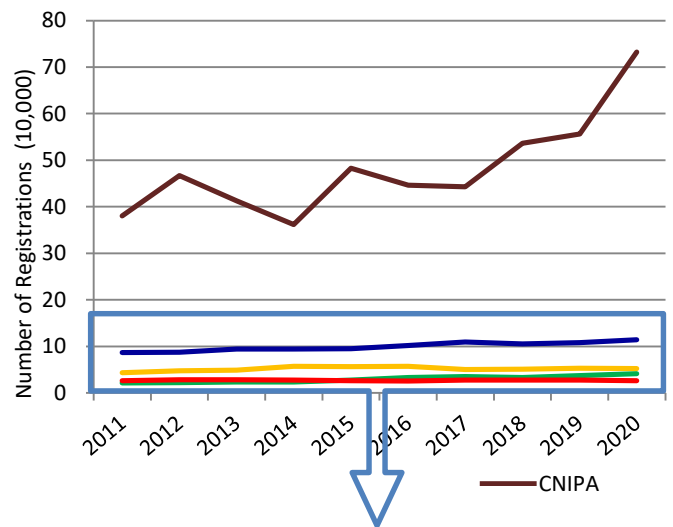
Updated

## Comparison between the five IP offices

Graph D4-1: Design applications at the five IP offices



Graph D4-2: Design registrations at the five IP offices



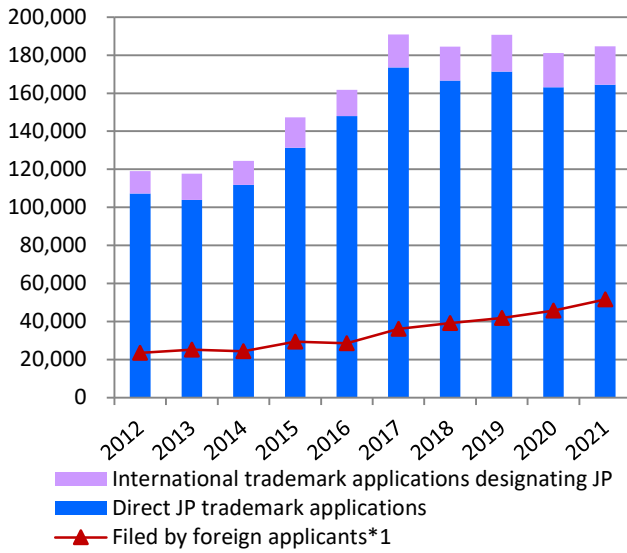
<sup>\*1</sup> Grant Rate of Design Applications = Design Registrations / Design Applications

# Statistics: Trademarks

Updated

## Trademark applications and registrations at the JPO

Graph T1-1: Trademark applications at the JPO



Graph T1-2: Trademark registrations at the JPO

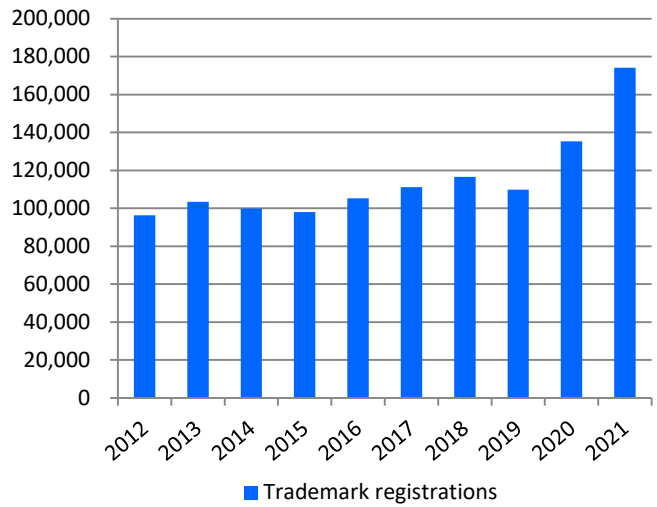


Table T1-1

Calendar Year	2017	2018	2019	2020	2021	y/y
JP trademark applications in total	190,939	184,483	190,773	181,072	184,631	+2.0%
International trademark applications designating JP	17,328	17,802	19,450	17,924	20,094	+12.1%
Direct JP trademark applications	173,611	166,681	171,323	163,148	164,537	+0.9%
Trademark registrations	111,180	116,547	109,859	135,313	174,098	+28.7%

## Trademark applications by different types of trademark\*2

Table T1-2

Calendar Year	2011	2012	2013	2014	2015	2016	2017	2018	2019	2020
3D / Applications	196	230	243	265	308	267	295	276	254	285
Registrations	93	130	150	146	174	150	141	137	125	155
Sound / Applications	-	-	-	-	365	133	80	51	37	20
Registrations	-	-	-	-	21	74	113	49	32	28
Movement / Applications	-	-	-	-	80	38	8	26	24	18
Registrations	-	-	-	-	13	47	31	8	17	20
Position / Applications	-	-	-	-	243	80	51	41	44	40
Registrations	-	-	-	-	5	14	21	19	16	15
Color / Applications	-	-	-	-	448	42	22	19	6	5
Registrations	-	-	-	-	0	0	2	5	1	0
Hologram / Applications	-	-	-	-	14	3	0	2	1	0
Registrations	-	-	-	-	1	8	2	1	2	1

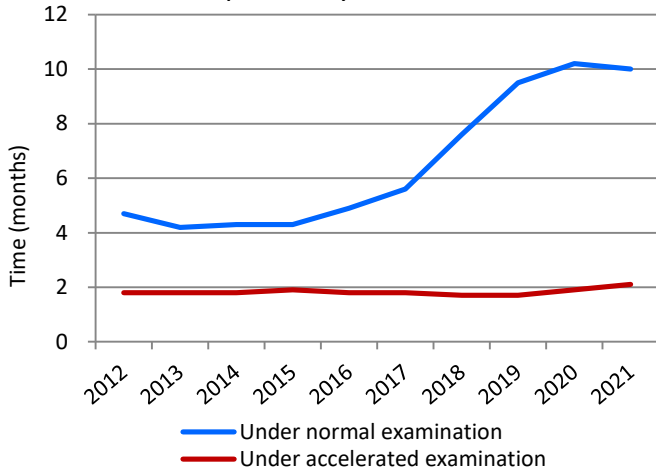
\*1 Sum of international trademark applications designating JP and direct-JP trademark applications filed by foreign applicants.

\*2 These data do not include the numbers of international trademark applications designating JP.

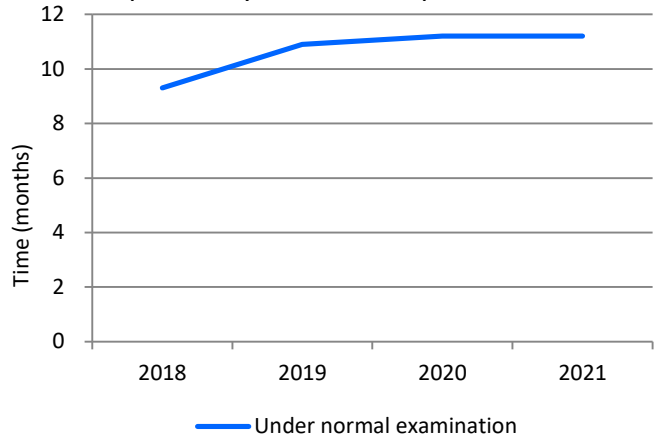
Updated

## Average time of pendency

Graph T2-1: Trademark examination pendency to 1<sup>st</sup> OA\*<sup>1</sup>



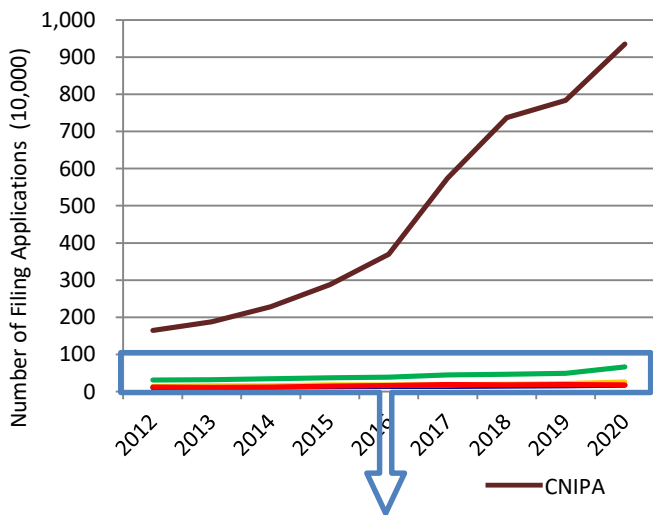
Graph T2-2: Trademark examination pendency to a final disposition\*<sup>2</sup>



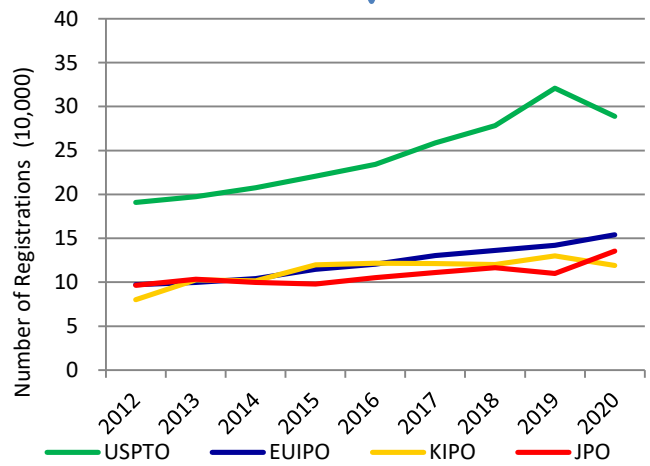
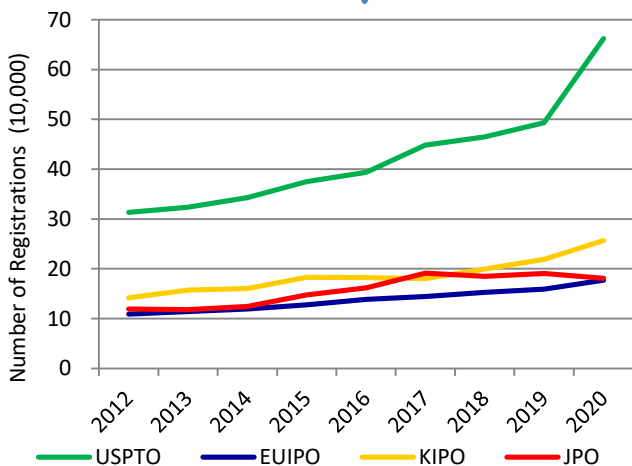
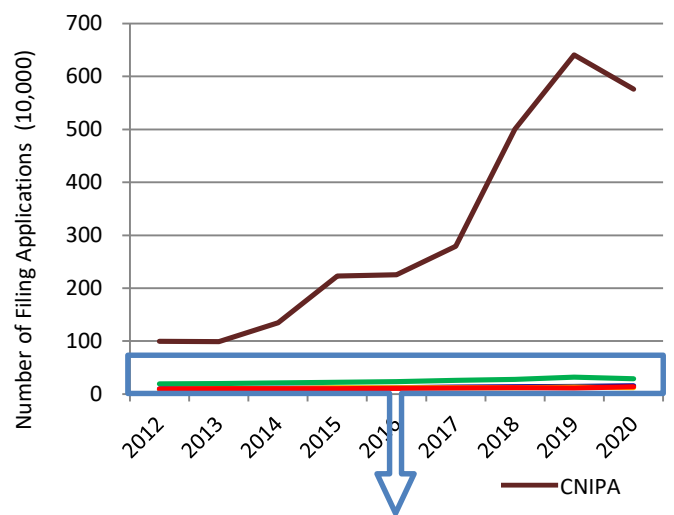
Updated

## Comparison between the five IP offices

Graph T3-1: Trademark applications at the five IP offices\*<sup>3</sup>



Graph T3-2: Trademark registrations at the five IP offices\*<sup>3</sup>



\*1 Applications that were filed on or after February 1, 2020, and satisfy certain requirements, shall be automatically subject to Fast Track Examination, and a first action will be issued within about six months from the filing date.

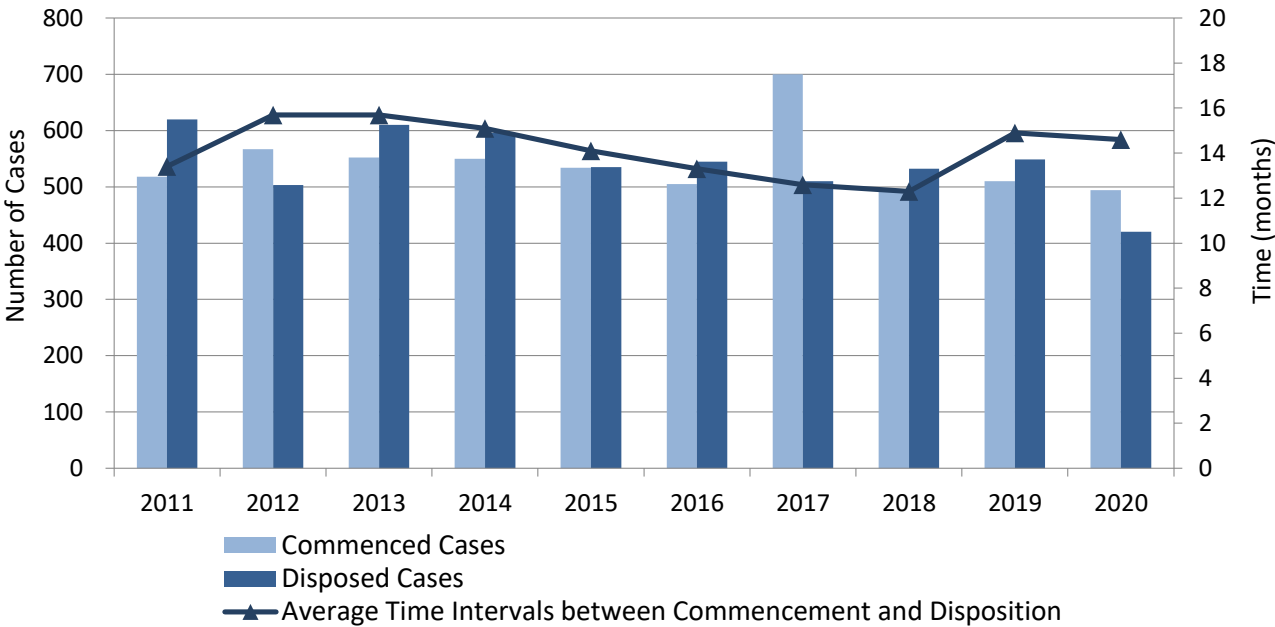
\*2 Withdrawal/Abandonment or Decision of Allowance or Rejection. Cases in which the applicant extended a response period for an Office Action are excluded.

\*3 Since CNIPA does not publish the number of trademark applications, the values are based on the number of trademark classes.

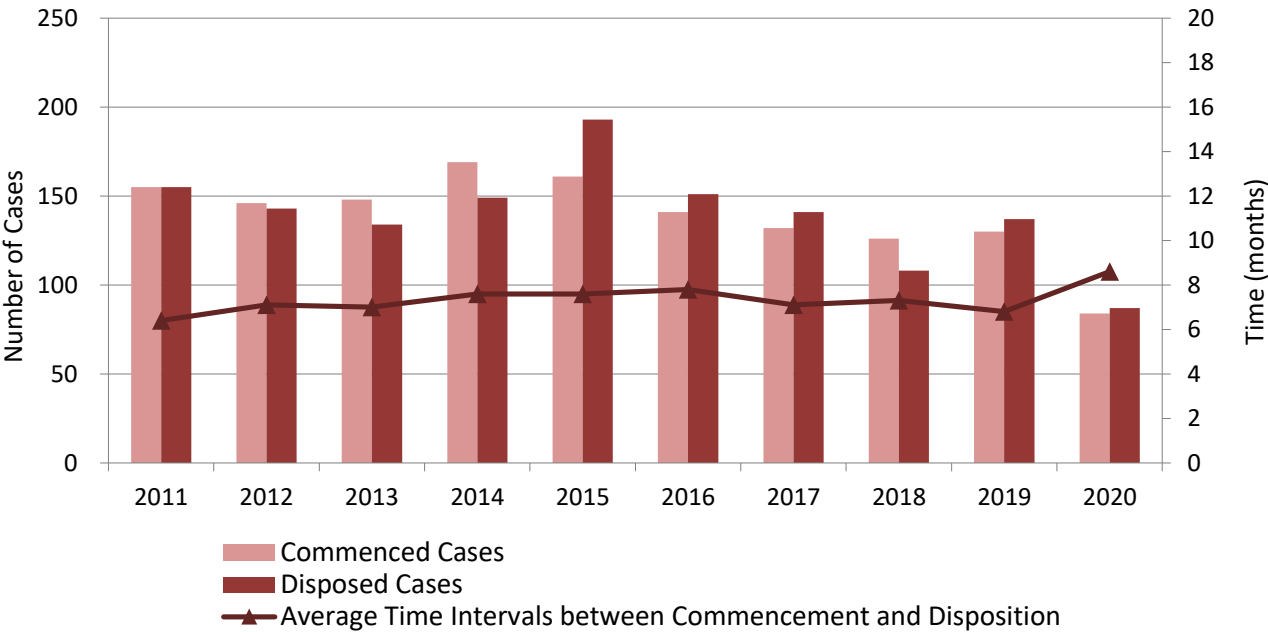
# Statistics: Litigation

**Updated** Infringement Suits and other IP-Related Civil Cases\*<sup>1</sup>

Graph L1-1: IP-Related Civil Cases at all District Courts (First Instances)



Graph L1-2: IP-Related Civil Cases at all High Courts (Second Instances)

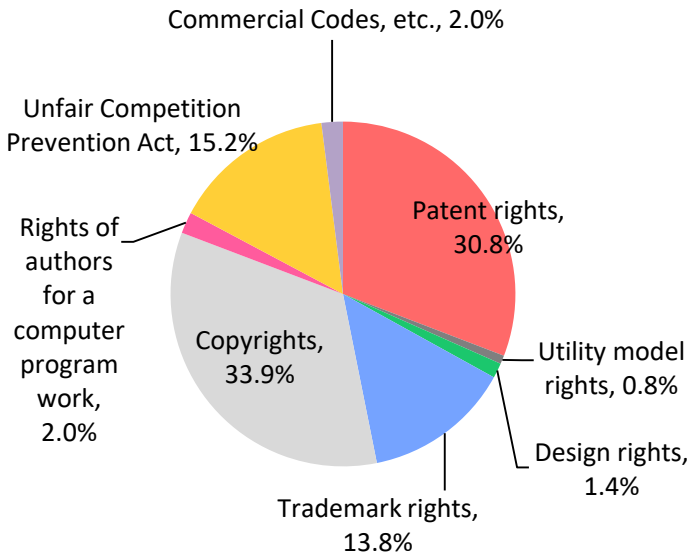


\*<sup>1</sup> These data include all the civil cases relating to patents, utility model registrations, design registrations and trademark registrations.

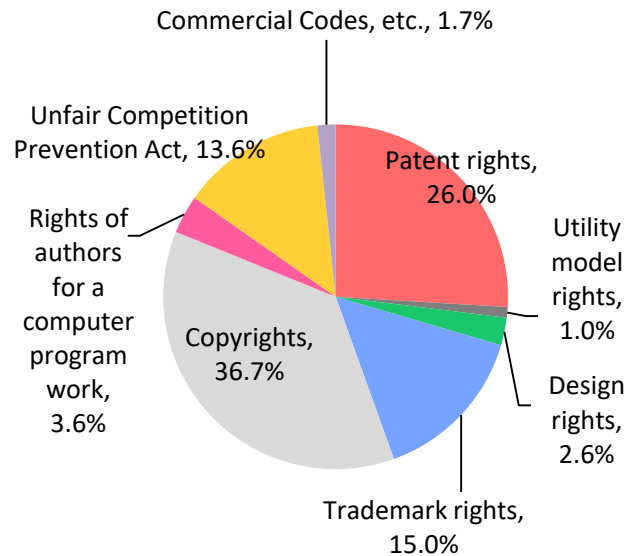
# Breakdown of IP-Related Civil Cases by IP Rights\*<sup>1</sup> (2020)

## Graphs L2-1: All District Courts

Commenced

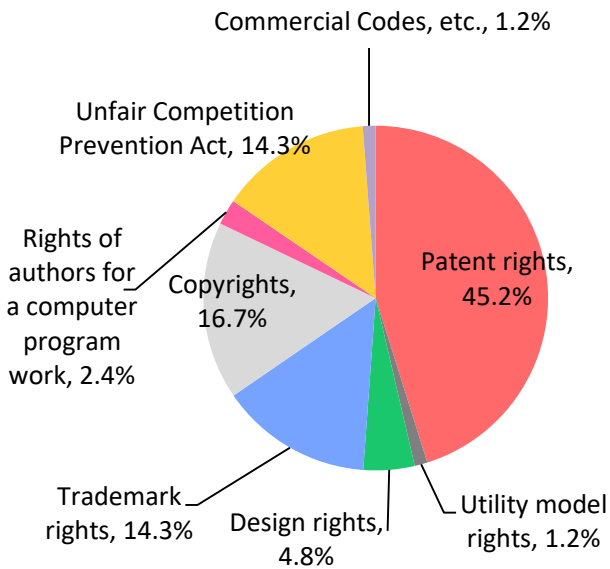


Disposed

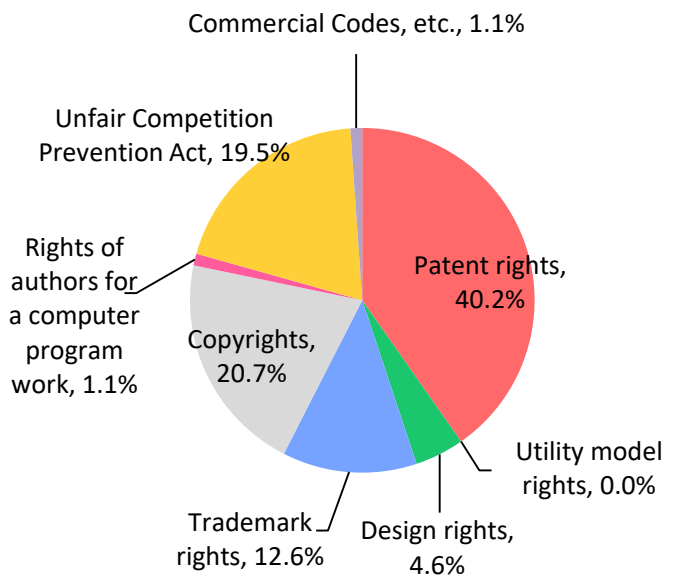


## Graphs L2-2: All High Courts

Commenced



Disposed



\*1 These data relate to IP-related civil cases, and thus do not include administrative litigations.

Graph L3: Breakdown of the Results of Patent Infringement Suits at the Tokyo & Osaka District Courts\*<sup>1</sup> (2014 to 2020)

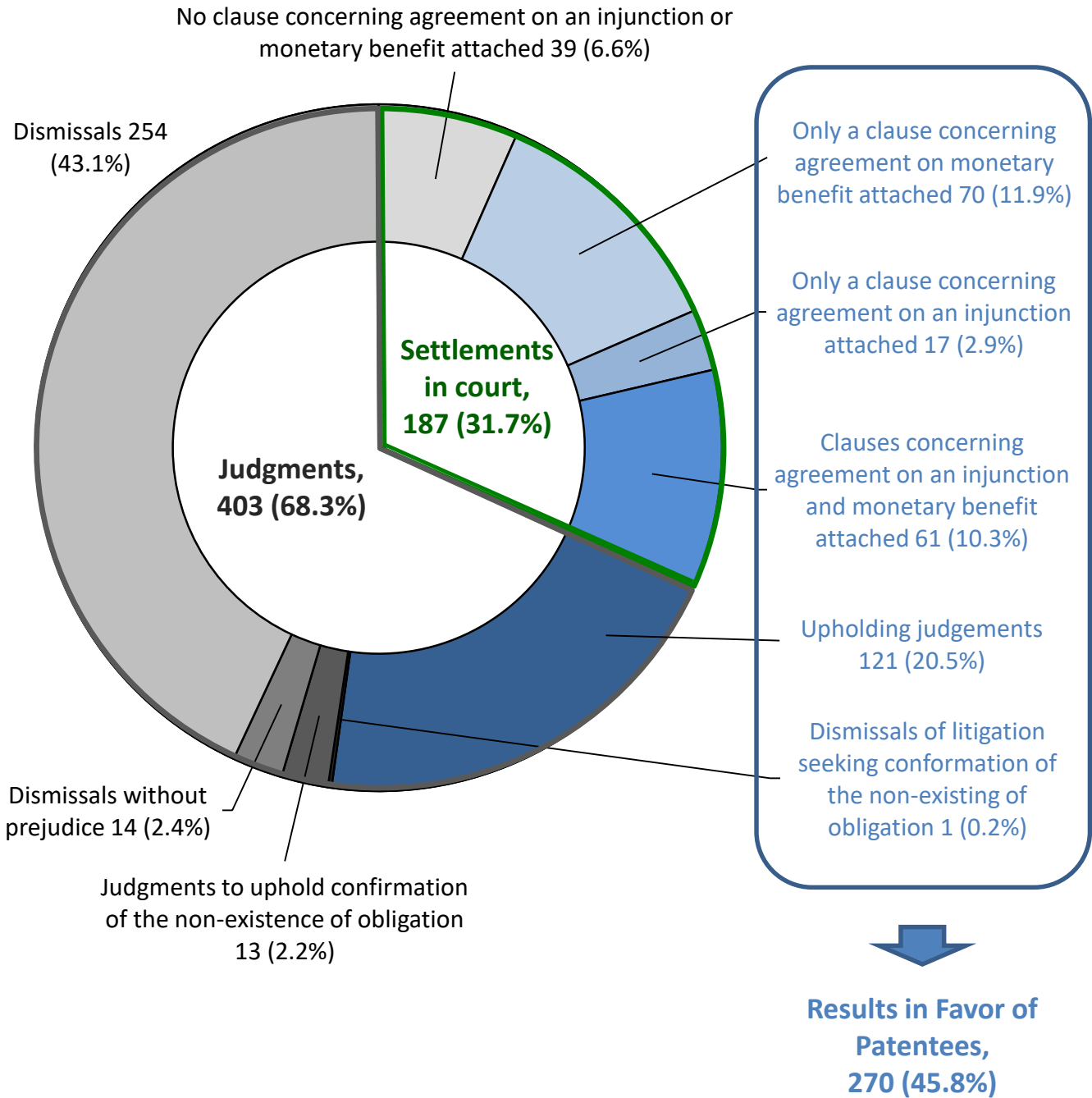


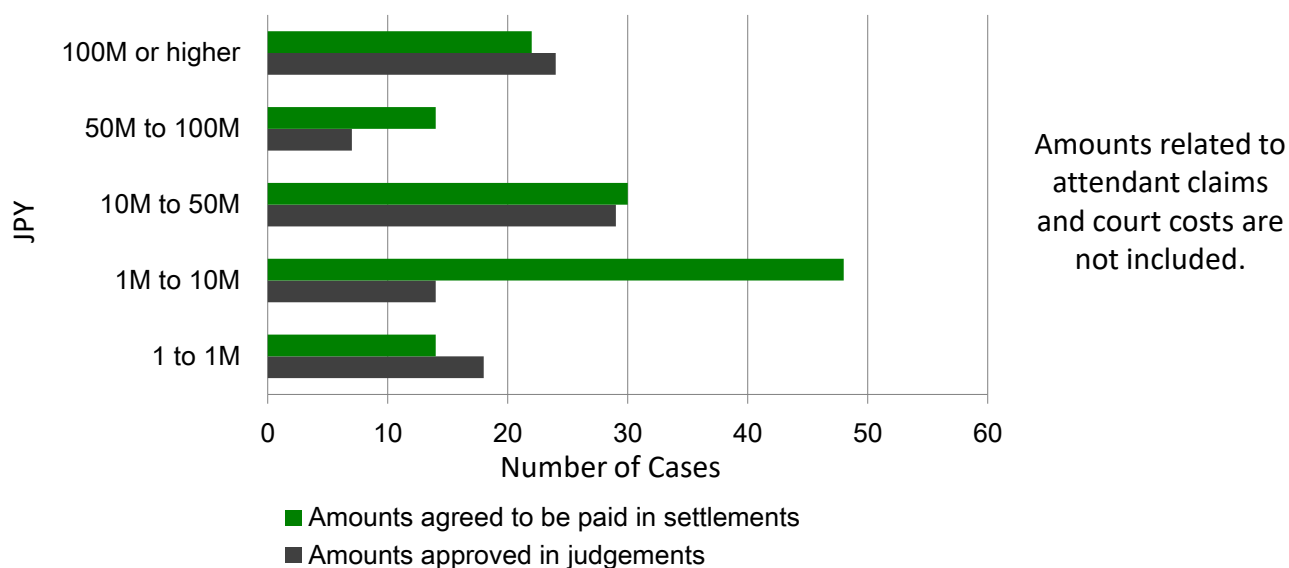
Table L1

	From 2014 to 2016	2017	2018	2019	2020
Results in favor of patentees	43.3%	43.8%	43.4%	44.6%	45.8%

\*1 Upholding judgments include judgments that partially uphold the claim.

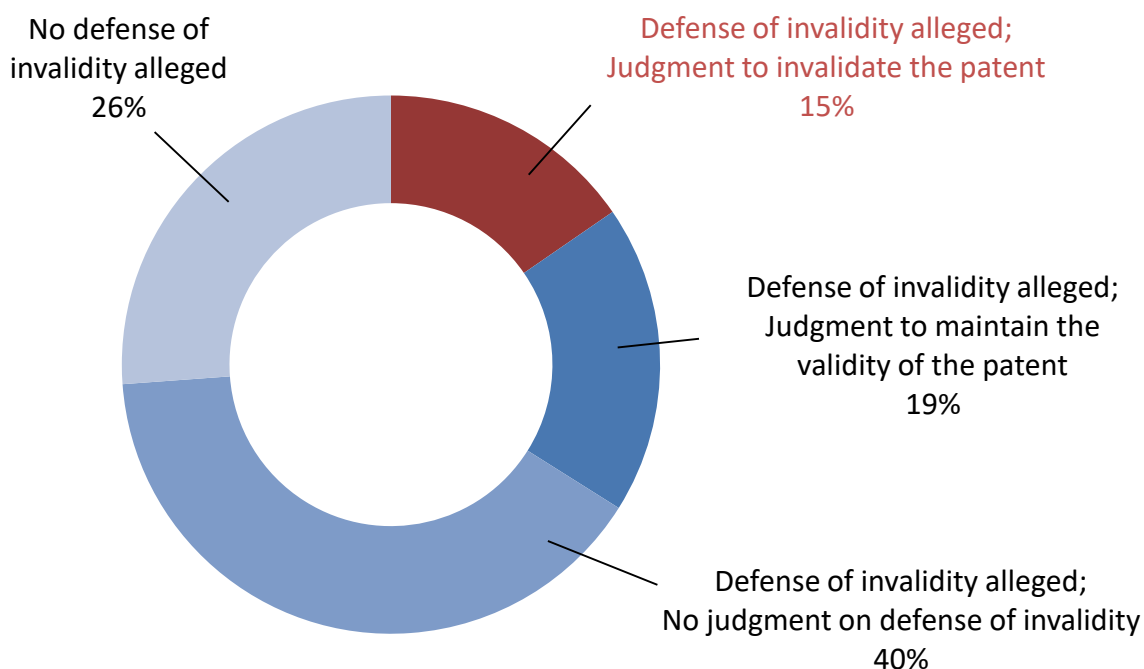
Updated

Graph L4: Amounts Approved in Judgments and agreed to be paid in settlements in court in patent infringement cases (2014-2020)



Updated

Graph L5: Whether defense of invalidity was judged and how it was judged in patent infringement cases (2014 to 2019)



Each number indicated presents the total number of patent rights claimed in cases concluded by final judgments. For example, if two patent rights were claimed in one patent infringement case, the number of patent rights is counted as two.