

IP Statistics 2025

Seiwa Patent & Law

(Tokyo, JAPAN)

September 2025

Abstract: This article summarizes recent statistical data relating to matters of intellectual property, such as patents, utility models, designs and trademarks, available from the Japan Patent Office (JPO), the Supreme Court of Japan (SCJ), the Intellectual Property High Court (IPHC) and WIPO, etc. **This edition includes updates based on the IPHC statistical data updated in May 2025, and the JPO Annual Report 2025 Edition published in July 2025, etc.**

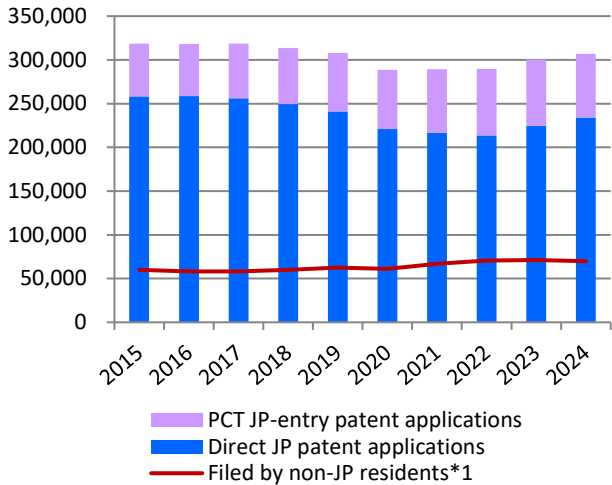
- In 2024, the JPO received 306,855 patent applications, marking a 2.2% year-over-year increase. While the number of international applications entered into Japan decreased compared to the previous year, a notable rise in direct Japanese patent applications contributed to the overall increase (p.2, Graph P1-1).
- Regarding patent applications, the average pendency from request for examination to issuance of a first OA in 2024 was 9.1 months, with the average time to final disposition being just 13.0 months—the shortest ever recorded (p.3, Graphs P2-1, P2-2).
- The revocation and invalidation rates in patent post-grant oppositions and invalidation have remained at a low level, the same as the previous year.(p.4, Graph P4-3; p.5, Graphs P4-4, P4-5).
- In 2024, the number of lawsuits for rescinding ex-parte appeal decisions and inter-partes trial decisions was the lowest in the past ten years. In addition, the rate of rescission of ex-parte appeal decisions has shown a significant decline in recent years (p.8, Graphs P7-1, P7-2).
- Regarding design applications, the total number filed at the JPO has remained steady at around 31,000 to 32,000 annually. In 2024, while the number of direct Japanese design applications slightly decreased, there was a significant 8.6% year-over-year increase in international design applications designating Japan (p.10, Graph D1-1).
- Trademark applications have shown a downward trend in recent years, totaling 158,792 in 2024, a 3.2% decrease from the previous year (p.12, Graph T1-1).

Patents Page 2
Utility Models Page 9
Designs Page 10
Trademarks Page 12
Litigation Page 14

Statistics: Patents

Patent applications and registrations at the JPO

Graph P1-1: Patent applications at the JPO



Graph P1-2: Patent registrations at the JPO

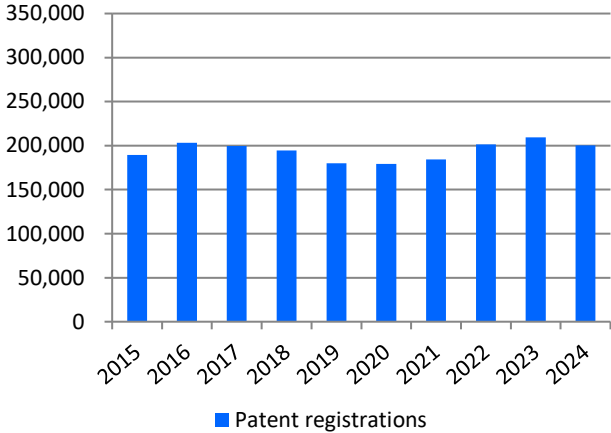
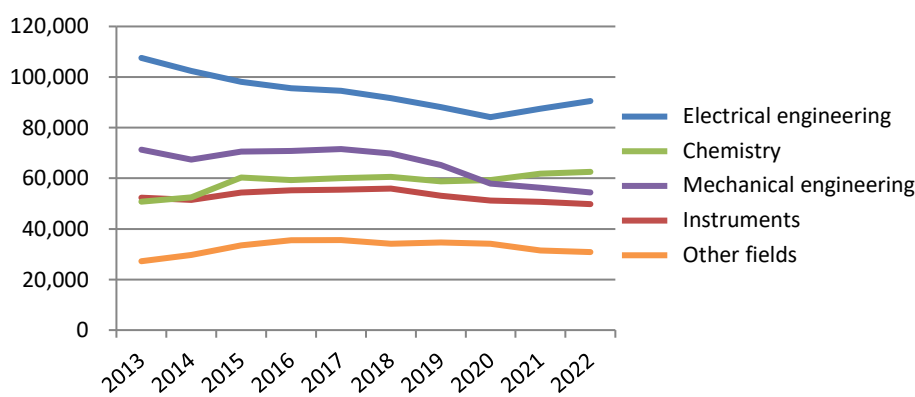


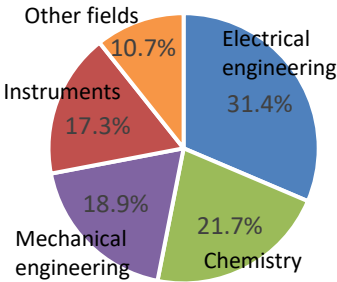
Table P1

Calendar Year	2020	2021	2022	2023	2024	y/y
JP patent applications in total	288,472	289,200	289,530	300,133	306,855	2.2%
PCT JP-entry patent applications	67,634	72,782	75,892	75,687	72,890	-3.7%
Direct JP patent applications	220,838	216,418	213,638	224,446	233,965	4.2%
Patent registrations	179,383	184,372	201,420	209,368	200,284	-4.3%

Graph P1-3: Patent applications at the JPO by sectors of technology*2



Graph P1-3: Proportions of patent applications at the JPO by sectors of technology in 2022



*1 Sum of PCT JP-entry and direct-JP patent applications filed by foreign applicants.

*2 The classification is based on the technology sectors according to the International Patent Classification (IPC and Technology Concordance Table) established by WIPO.

Electrical engineering: electrical machinery, electrical apparatus, electrical energy, audio-visual technology, telecommunications, digital communications, basic electronic elements, computer technology, IT methods for management, and semiconductors.

Chemistry: organic chemistry, agrochemicals, biotechnology, pharmaceuticals, macromolecular chemistry, polymers, food chemistry, basic materials chemistry, inorganic materials, metallurgy, surface processing, microstructure, nanotechnology, chemical engineering, and environmental chemistry.

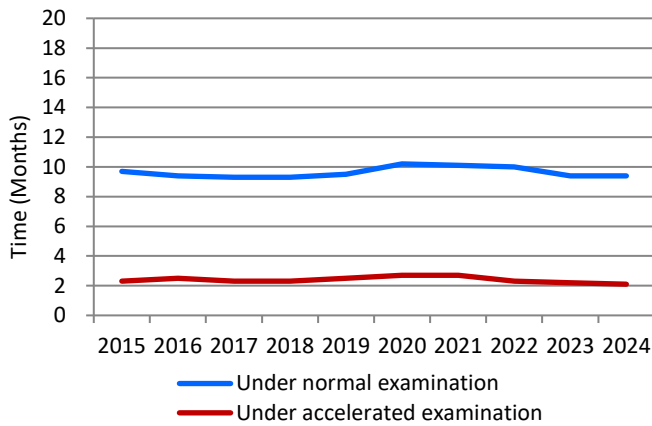
Mechanical engineering: handling machinery, machining tools, engines, pumps, turbines, textiles, paper manufacturing, other special machinery, heat treatment mechanisms, machine components, and transportation.

Instruments: optics, measurement, analysis of biological materials, control devices, and medical devices.

Other fields: furniture, gaming, other consumer goods, and civil engineering.

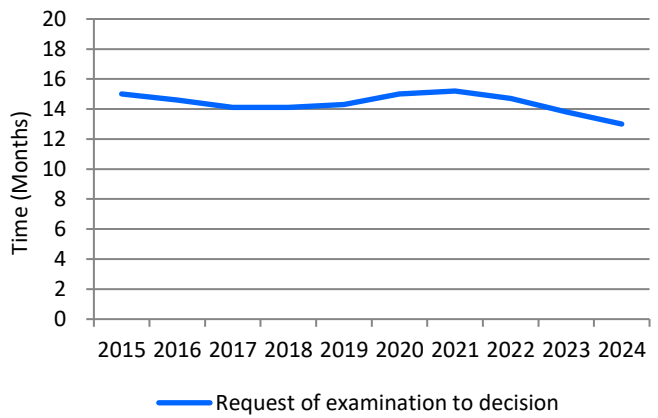
Average time of pendency

Graph P2-1: Pendency from request of examination to 1st OA

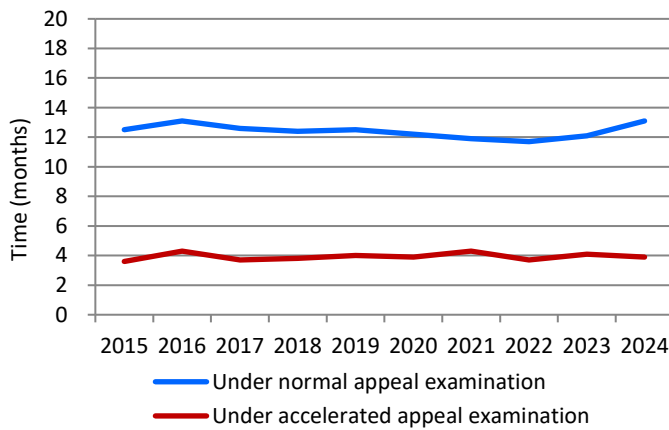


Updated

Graph P2-2: Pendency from request of examination to a final disposition*¹



Graph P2-3: Pendency from demand of appeal trial to appeal decision

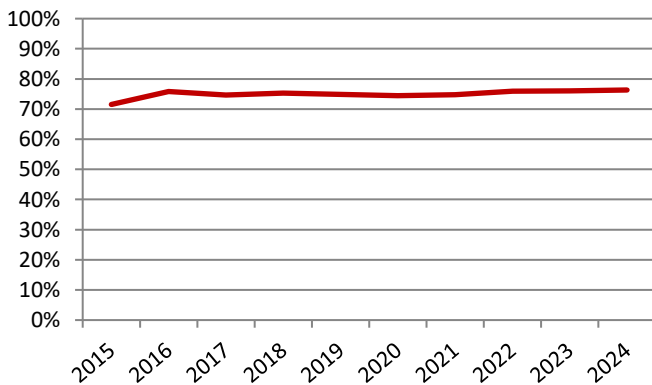


The JPO works to maintain prompt examinations by securing the necessary number of examiners and outsourcing prior art searches. At the same time, to grant high-quality rights, the JPO promotes initiatives aimed at achieving the world's highest quality patent examinations based on the "Patent Examination Quality Policy" and the "Quality Management Manual for Patent Examination", which outlines quality control measures and their implementation framework.

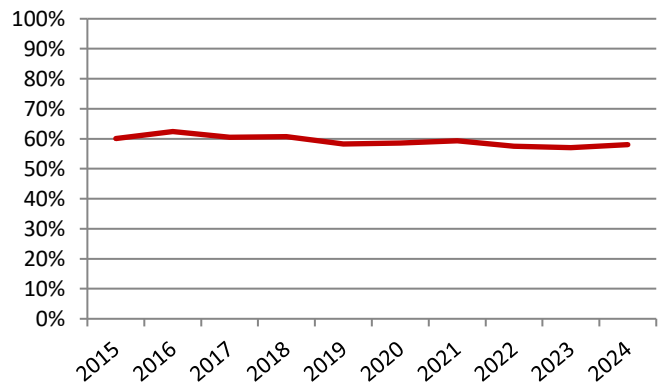
Grant rate at the JPO

Updated

Graph P3-1: Grant rate at examination*²



Graph P3-2: Grant rate at preappeal reexamination*³

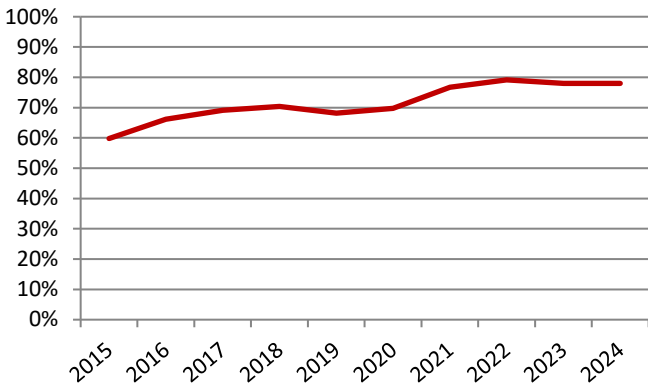


*1 Withdrawal/Abandonment or Decision of Allowance or Decision of Rejection. Cases in which the applicant extended a response period for an Office Action are excluded.

*2 Grant rate at examination = decisions of grant at examination / (decisions of grant at examination + decisions of rejection at examination + withdrawal or abandonment after request for examination)

*3 Grant rate at pretrial reexamination = decisions of grant at pretrial reexamination / (decisions of grant at pretrial reexamination + cases transferred to appeal + withdrawal or abandonment at pretrial reexamination)

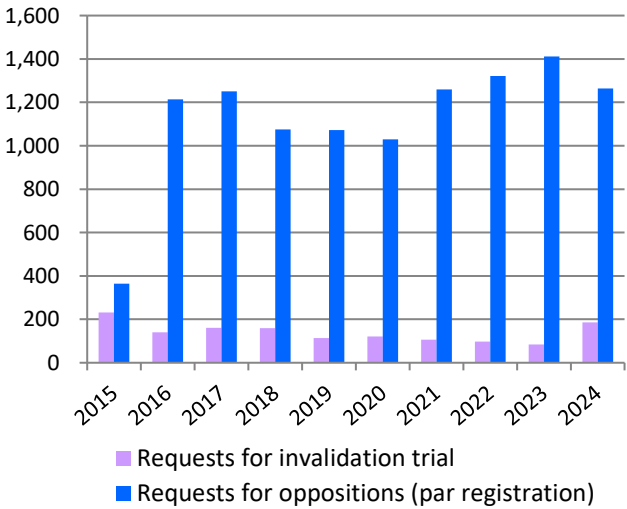
Graph P3-3: Grant rate at appeal*1



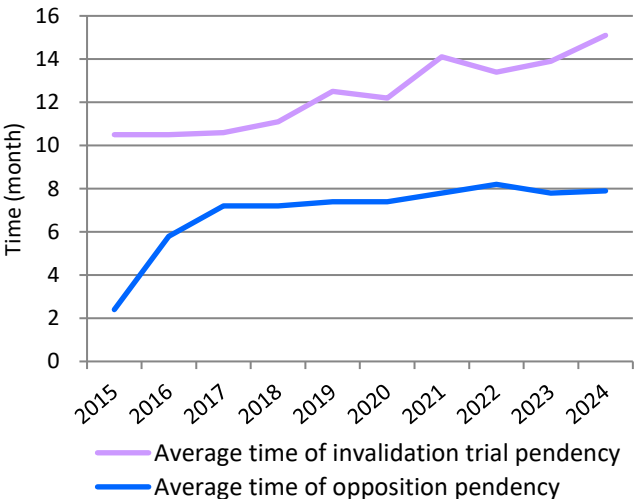
The patent grant rates in examination, pre-appeal and appeal examination at the JPO have remained consistently high in recent years. This trend can be attributed to several factors, including a shift in corporate IP strategies from focusing on quantity to prioritizing quality.

Opposition & Invalidation Trial

Graph P4-1: Requests for opposition & invalidation trial

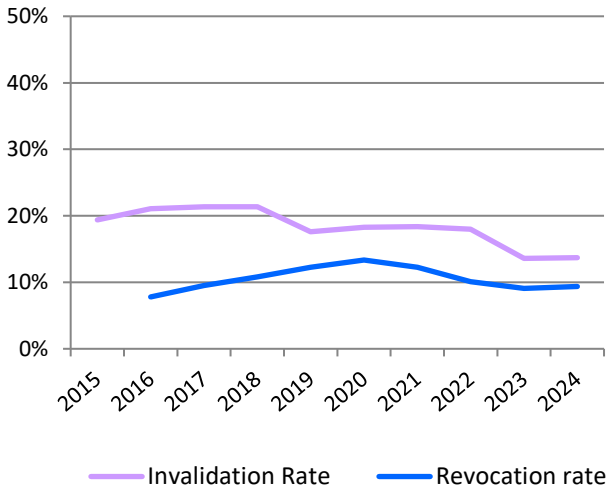


Graph P4-2: Average time of pendency at opposition & invalidation trial*2



Updated

Graph P4-3: Rate of invalidation and revocation of patent (all or some claims)*3



*1 Grant rate at appeal = appeal decisions of grant / (appeal decisions of grant + appeal decisions of rejection)

*2 Opposition: from request to Notice of Reasons for Revocation (Advance Notice of Decision) or Decision Invalidation Trial: from request to Advance notice of Decision or Decision

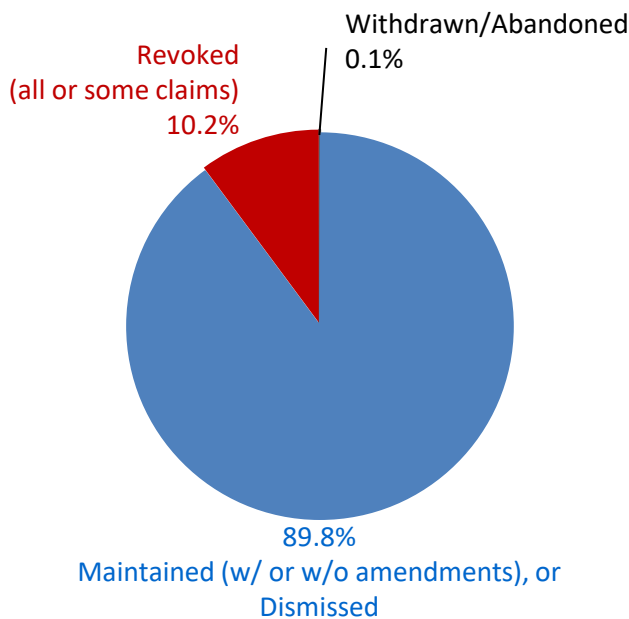
*3 Rate of Invalidation of Patent (all or some claims) = Trial Decisions to Invalidate all or some claims of Patent / (Trial Decisions to Invalidate all or some claims of Patent + Trial Decisions to Maintain Patent)

Rate of Revocation of Patent (all or some claims) = Trial Decisions to Revoke all claims of Patent / (Trial Decisions to Revoke all or some claims of Patent + Trial Decisions to Maintain Patent)

The rate of invalidation and rate of revocation are calculated as a three-year moving average.

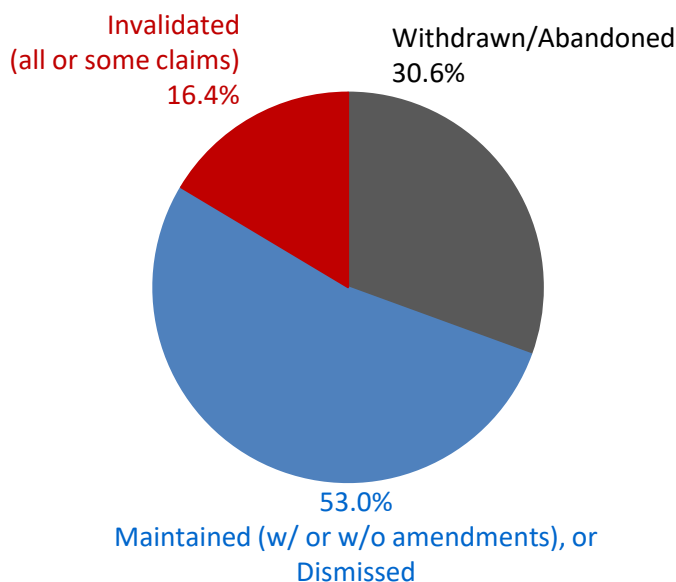
Breakdown of Oppositions & Invalidation Trials Results

Updated Graph P4-4: Results of Oppositions



Outcomes of oppositions
disposed from Jan. 2020 to Dec. 2024

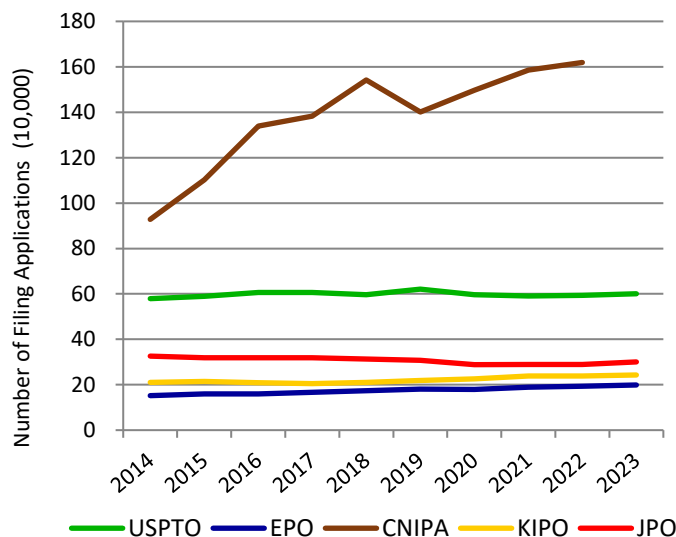
Updated Graph P4-5: Results of Invalidation Trials



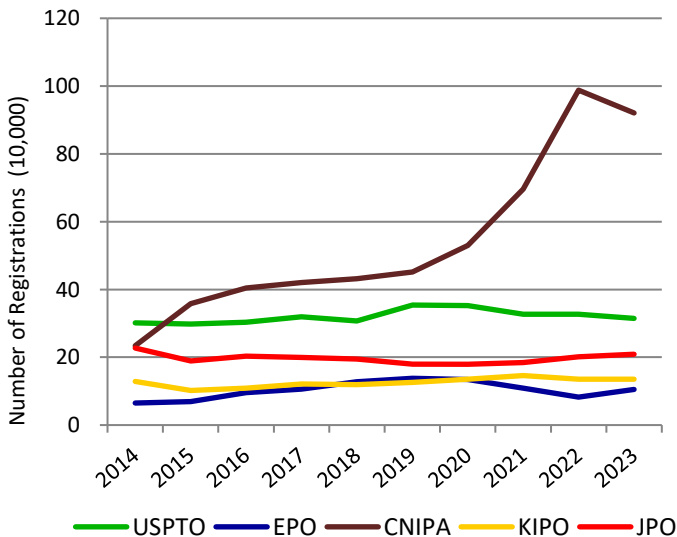
Outcomes of Invalidation trials
disposed from Jan. 2020 to Dec. 2024

Comparison between the five IP offices

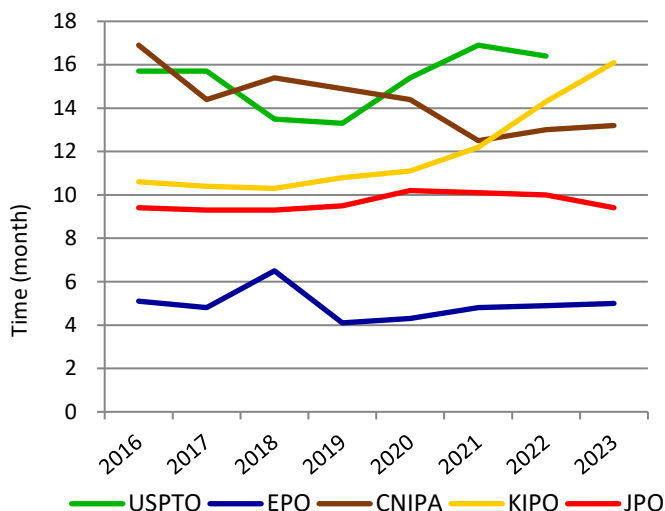
Graph P5-1: Patent applications
at the five IP offices



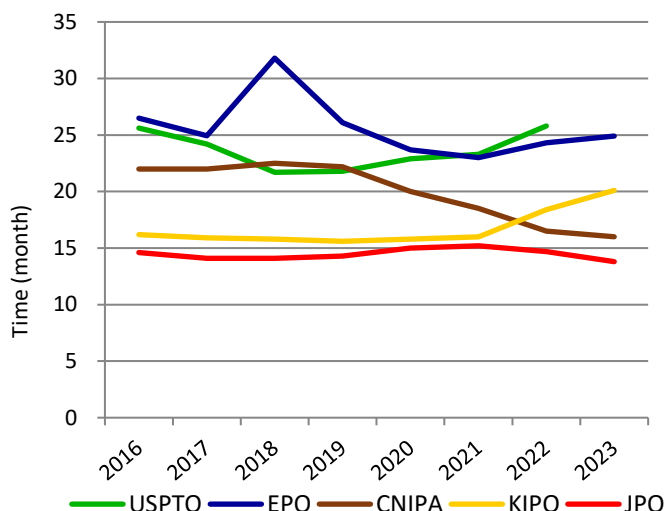
Graph P5-2: Patent registrations
at the five IP offices



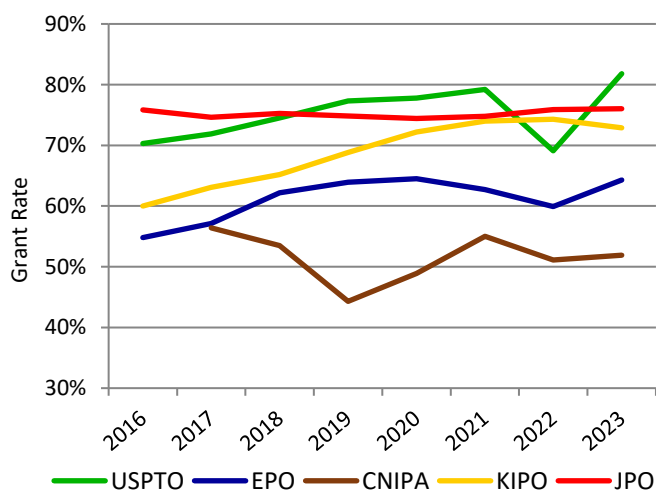
Graph P5-3: Average time of examination pendency to 1st OA*¹



Graph P5-4: Average time of examination pendency to disposition*²



Graph P5-5: Patent grant rate at the five IP offices*³



*1 Average time of examination pendency to 1st OA:
JPO = average time of from requesting examination to 1st OA
USPTO = average time of from filing date to 1st OA
EPO = median time of from filing date to Extended European Search Report
KIPO = average time of from requesting examination to 1st OA
CNIPA = average time of from starting examination to 1st OA

*2 Average time of examination pendency to decision:
JPO = average time of from requesting examination to withdrawal, abandonment, or Decision of Allowance or Decision of Rejection
USPTO = average time of from filing date to abandonment or a final disposal (including reexamination)
EPO = median time of from starting examination to final disposal
KIPO = (total examination period of patent applications disposed in the year) / (total number of patent applications disposed in the year)

*3 Grant Rate at Examination:

JPO = Decision of Grant at Examination / (Decision of Grant at Examination + Decision of Rejection at Examination + Withdrawal or Abandonment after Request for Examination)

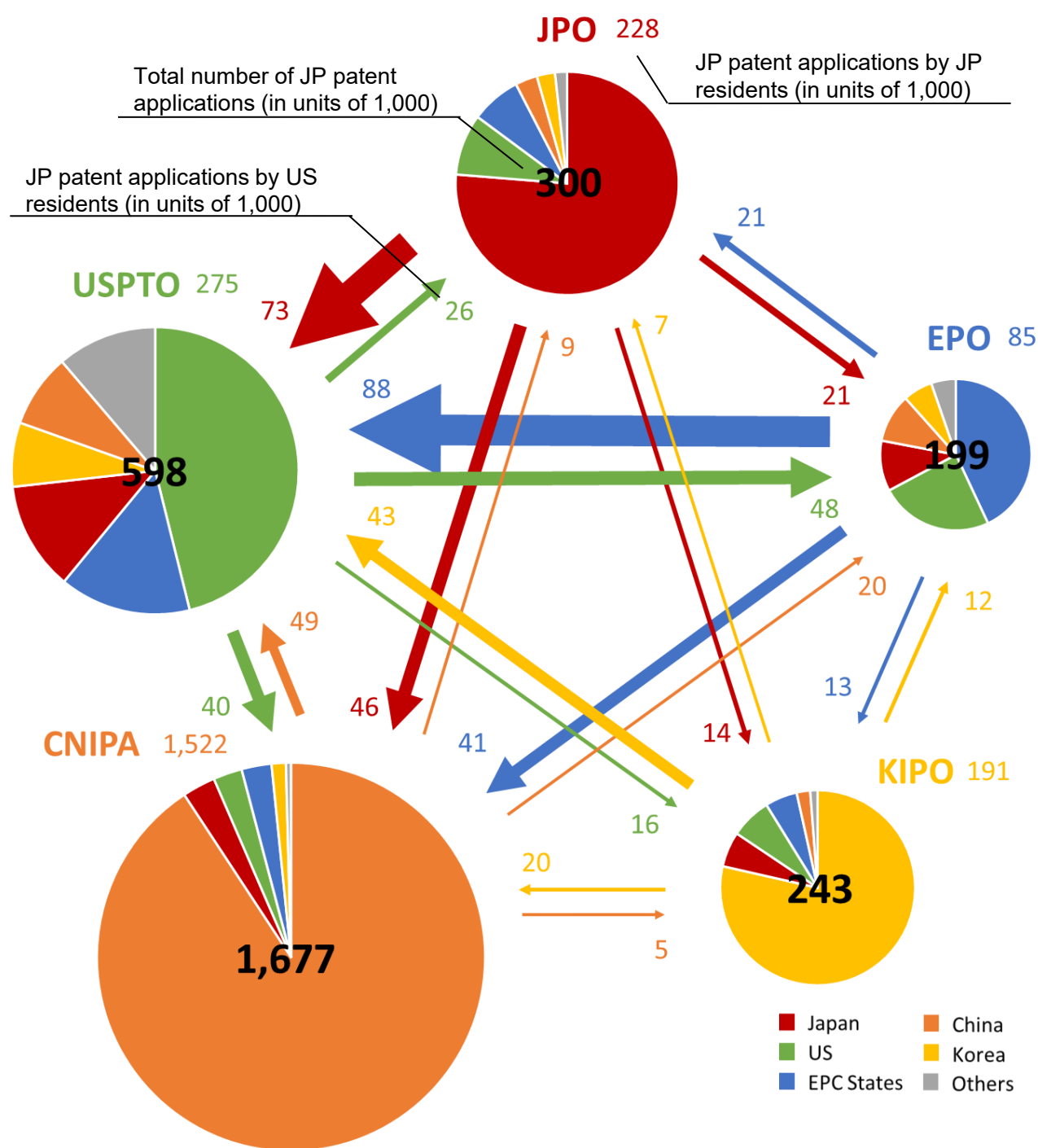
USPTO = Patent Grants / Patent Applications

EPO = Decision of Grant at Examination / (Decision of Grant at Examination + Decision of Rejection at Examination + Abandonment)

KIPO = Decision of Grant at Examination / (Decision of Grant at Examination + Decision of Rejection at Examination + Withdrawal after Request for Examination)

CNIPA does not disclose the definition of the Grant Rate at Examination.

Graph P6: Patent applications filed at the five IP offices by origin*1 (in 2023)

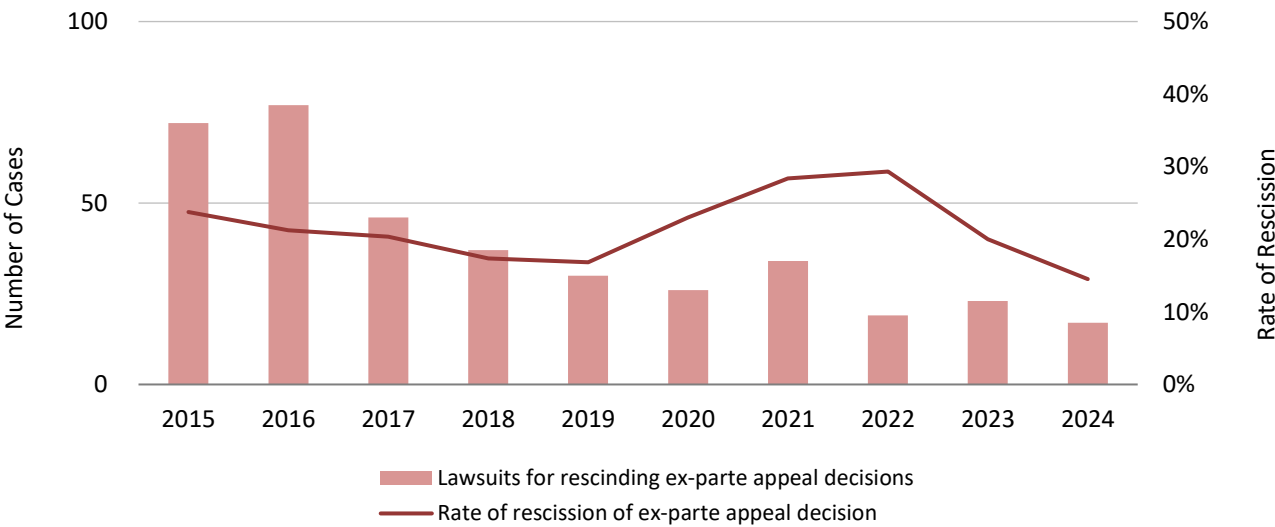


*1 The origin is based on residence of first named applicants. The amounts were rounded down and given in units of 1,000.

Lawsuits against the JPO’s Appeal/Trial Decisions in relation to Patent

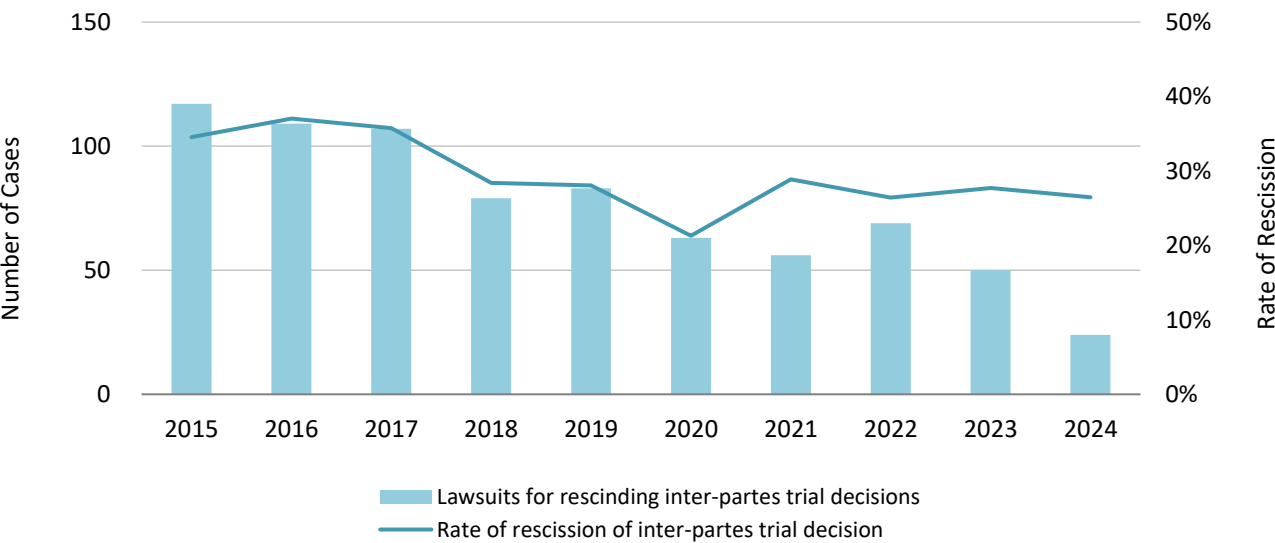
Updated

Graph P7-1: Lawsuits against *Ex-Parte* Appeal/Trial Decisions in relation to Patent Applications and their Total Rate of Rescission*¹



Updated

Graph P7-2: Lawsuits against *Inter-Partes* Appeal/Trial Decisions in relation to Patent Rights and their Total Rate of Rescission*²



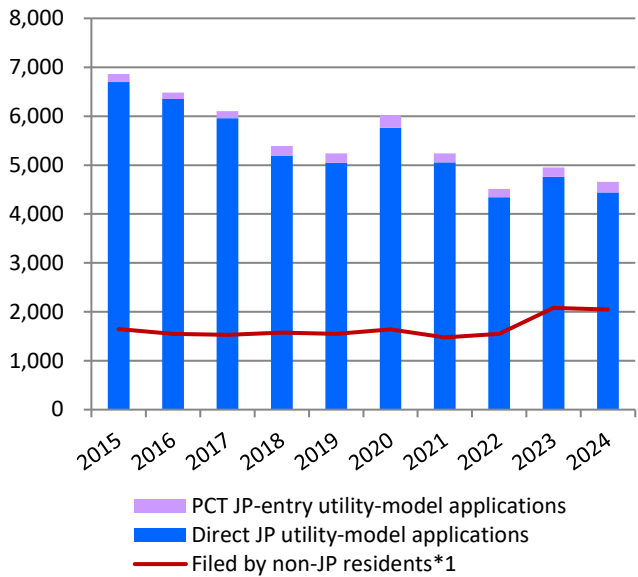
*1 These data include lawsuits against Trial Decisions of Rejection and Dismissal of Amendment in relation to patent applications. The rate of rescission is a three-year moving average.

*2 These data include lawsuits against Trial Decisions of Invalidation and Correction Trials in relation to patent rights. The rate of rescission is a three-year moving average.

Statistics: Utility Models

Utility model applications and registrations at the JPO

Graph U1-1: Utility model applications at the JPO



Graph U1-2: Utility model registrations at the JPO

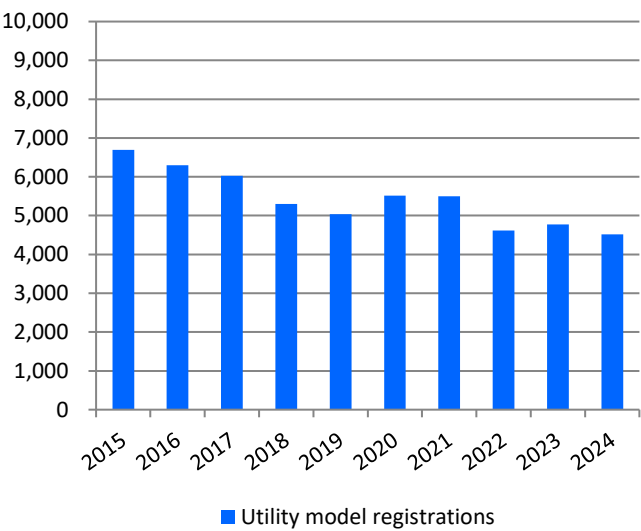
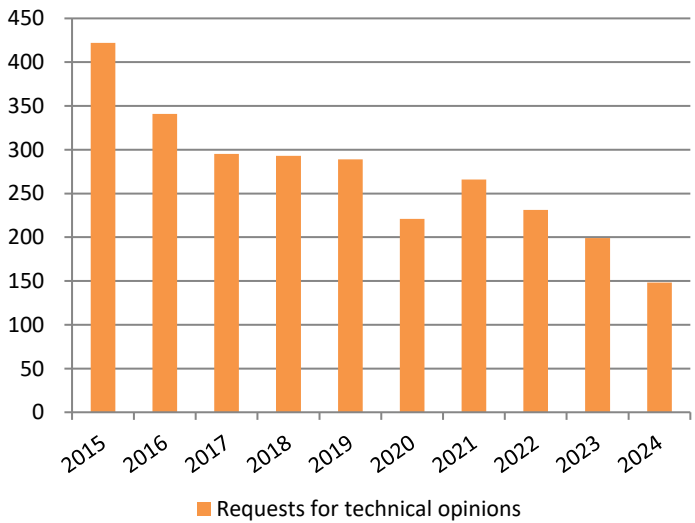


Table U1

Calendar Year	2020	2021	2022	2023	2024	y/y
JP utility-model applications in total	6,018	5,239	4,513	4,949	4,655	-5.9%
PCT JP-entry utility-model applications	253	180	173	186	213	14.5%
Direct JP utility-model applications	5,765	5,059	4,340	4,763	4,442	-6.7%
Utility model registrations	5,518	5,499	4,615	4,772	4,514	-5.4%
Requests for technical opinions	221	266	231	199	148	-25.6%

Requests for Technical Opinions*2

Graph U2



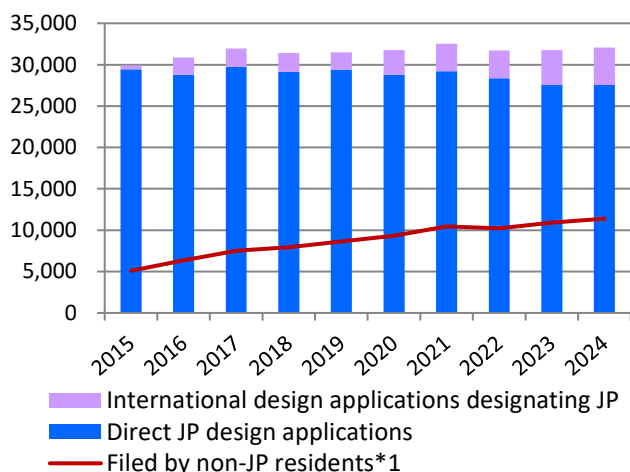
*1 Sum of PCT JP-entry and direct-JP utility-model applications filed by foreign applicants.

*2 A utility model right owner cannot enforce its utility model right without warning an opposing party in advance with indicating a technical opinion by the examiner.

Statistics: Designs

Design applications and registrations at the JPO

Graph D1-1: Design applications at the JPO



Graph D2-2: Design registrations at the JPO

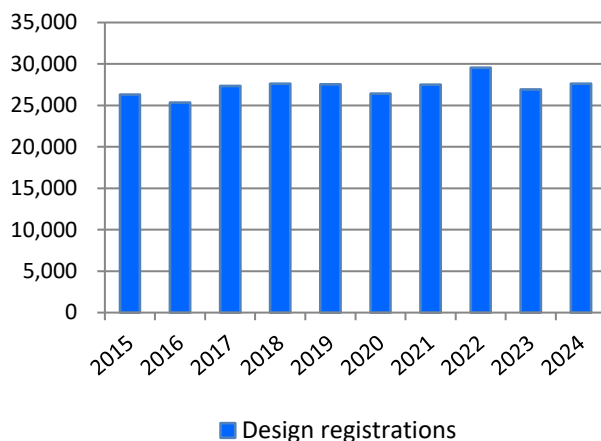


Table D1-1

Calendar Year	2020	2021	2022	2023	2024	y/y
JP design applications in total	31,752	32,525	31,711	31,747	32,065	1.0%
International design applications designating JP	2,986	3,303	3,353	4,160	4,518	8.6%
Direct JP design applications	28,766	29,222	28,358	27,587	27,547	-0.1%
Design registrations	26,417	27,490	29,540	26,908	27,598	2.6%

The number of applications and registrations for new types of design (from April 1, 2020 to March 3, 2025)

Table D1-2

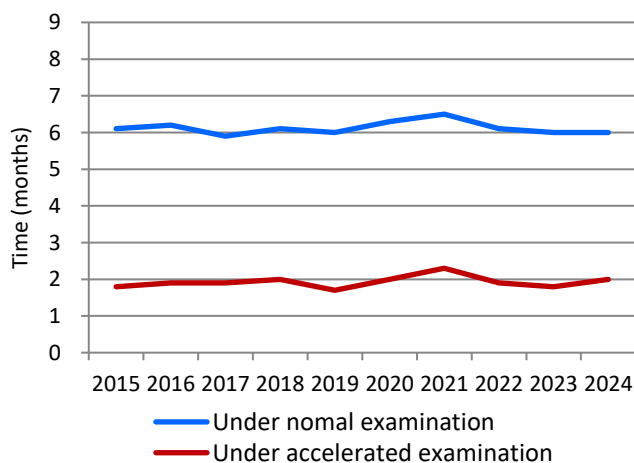
	Applications	Registrations
Graphic Images	6,839	5,056
Buildings	1,858	1,441
Interior Designs	1,238	844

It became possible to protect graphic images, buildings and interior designs from April 1, 2020. This table shows the number of applications and registrations for these new types of design from April 1, 2020 to March 3, 2025.

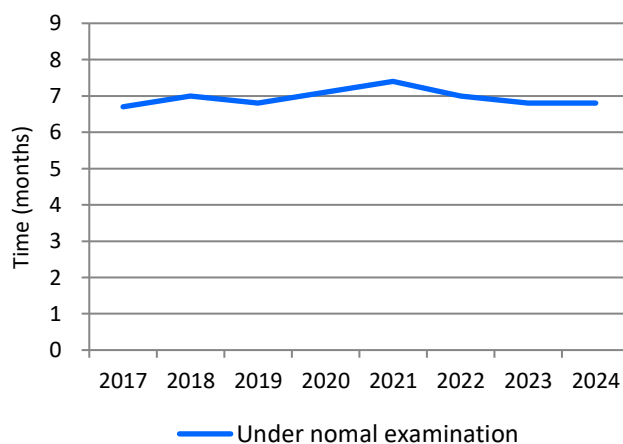
Average time of pendency

Updated

Graph D2-1: Examination pendency to 1st OA



Graph D2-2: Design examination pendency to a final disposition*2

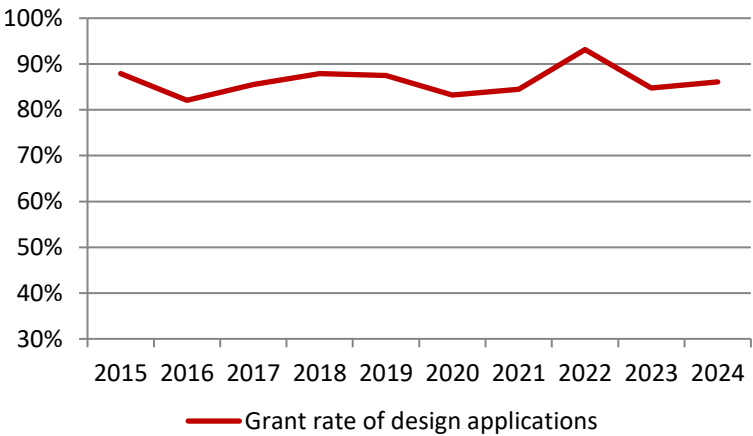


*1 Sum of international design applications designating JP and direct-JP design applications filed by foreign applicants.

*2 Withdrawal/Abandonment or Decision of Allowance or Decision of Rejection. Cases in which the applicant extended a response period for an Office Action are excluded.

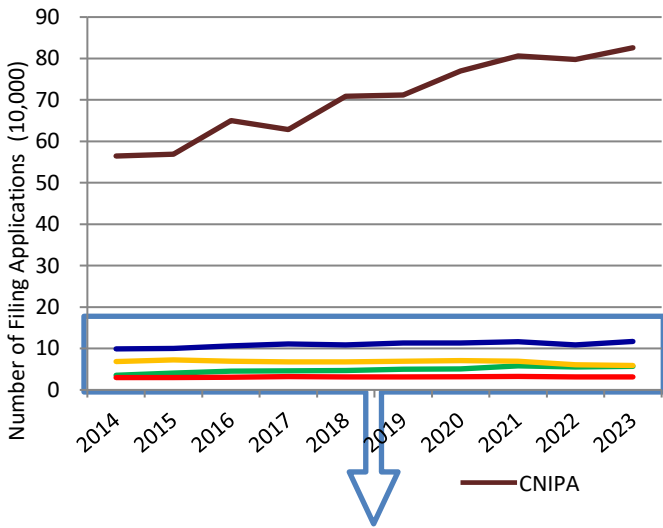
Grant rate at examination of design applications*¹

Graph D3: Design grant rate

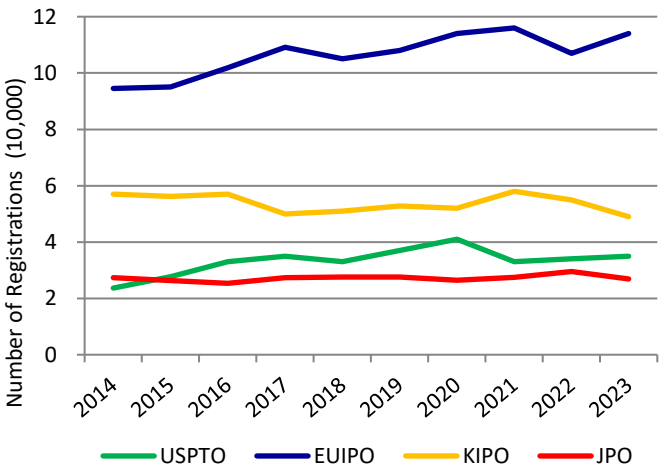
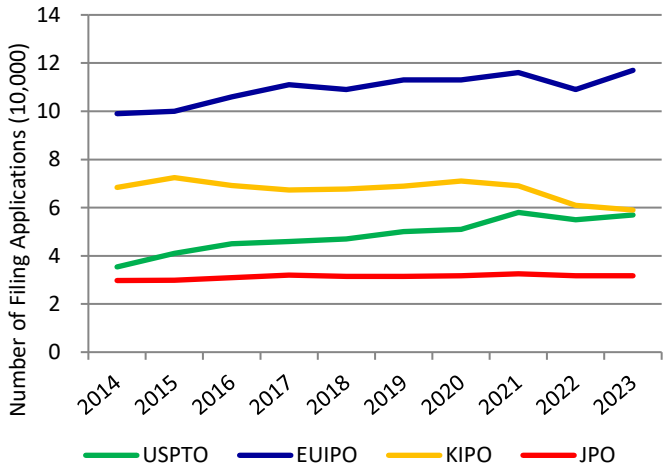
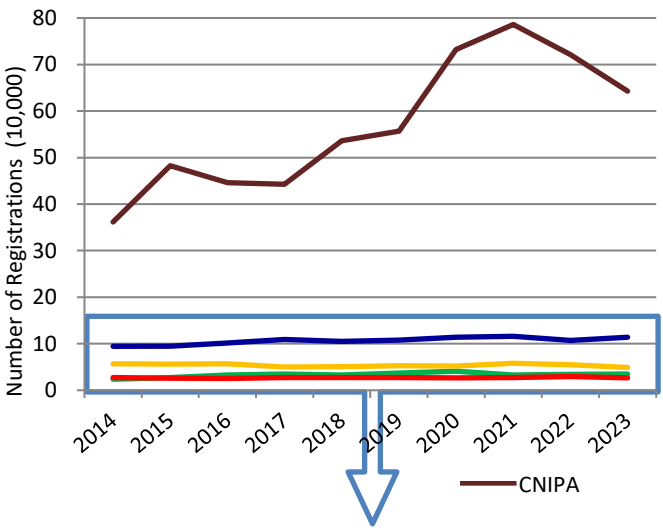


Comparison between the five IP offices

Graph D4-1: Design applications at the five IP offices



Graph D4-2: Design registrations at the five IP offices

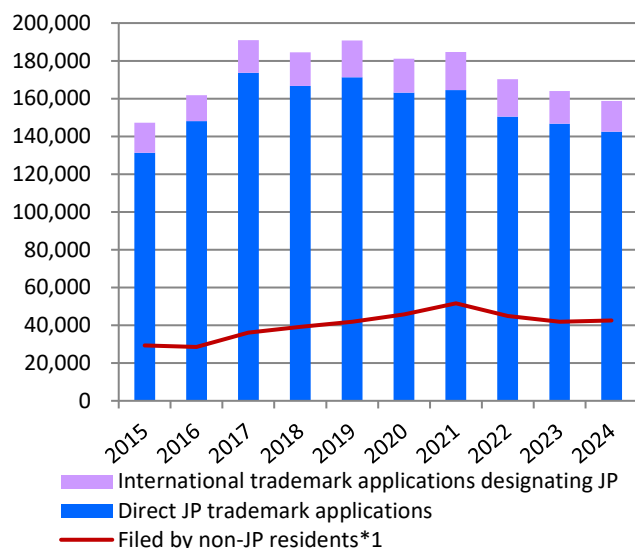


*1 Grant Rate of Design Applications = Design Registrations / Design Applications

Statistics: Trademarks

Trademark applications and registrations at the JPO

Graph T1-1: Trademark applications at the JPO



Graph T1-2: Trademark registrations at the JPO

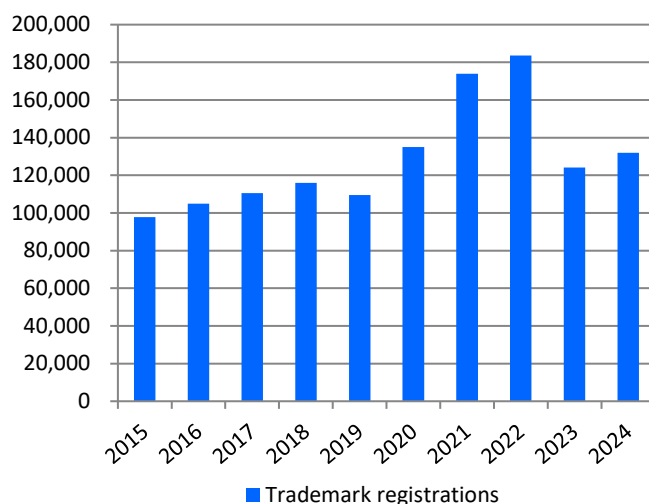


Table T1-1

Calendar Year	2020	2021	2022	2023	2024	y/y
JP trademark applications in total	181,072	184,631	170,275	164,061	158,792	-3.2%
International trademark applications designating JP	17,924	20,094	19,769	17,397	16,252	-6.6%
Direct JP trademark applications	163,148	164,537	150,506	146,664	142,540	-2.8%
Trademark registrations	135,313	174,098	183,804	124,334	132,011	6.4%

Updated

Trademark applications for non-traditional marks^{*2}

Table T1-2

Calendar Year	2015	2016	2017	2018	2019	2020	2021	2022	2023	2024
3D / Applications	308	267	295	276	254	285	337	311	274	272
Registrations	174	150	141	137	125	155	160	202	159	156
Sound / Applications	365	133	80	51	37	20	22	19	21	31
Registrations	21	74	113	49	32	28	18	11	16	12
Motion / Applications	80	38	8	26	24	18	22	18	20	18
Registrations	13	47	31	8	17	20	16	27	10	19
Position / Applications	243	80	51	41	44	40	44	30	32	40
Registrations	5	14	21	19	16	15	13	28	27	17
Color / Applications	448	42	22	19	6	5	8	7	11	6
Registrations	0	0	2	5	1	0	0	1	0	2
Hologram / Applications	14	3	0	2	1	0	0	1	0	0
Registrations	1	8	2	1	2	1	0	1	0	0

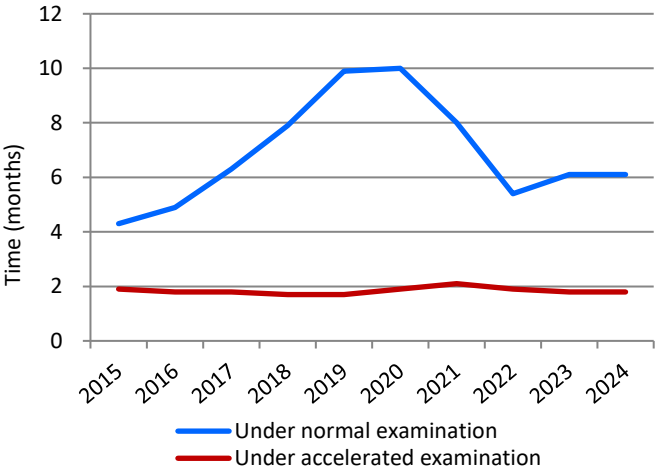
*1 Sum of international trademark applications designating JP and direct-JP trademark applications filed by foreign applicants.

*2 These data do not include the numbers of international trademark applications designating JP.

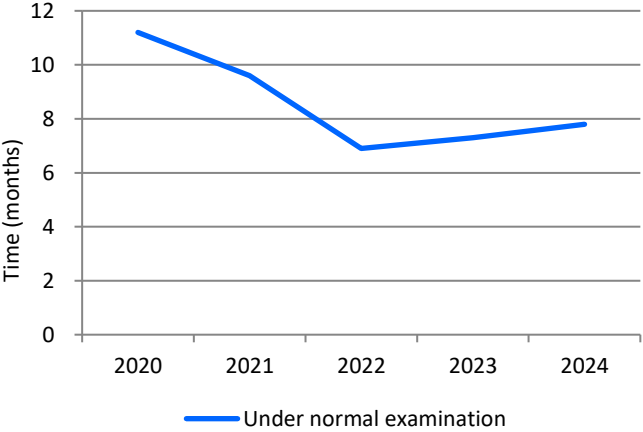
Average time of pendency

Updated

Graph T2-1: Trademark examination pendency from filing to 1st OA^{*1}

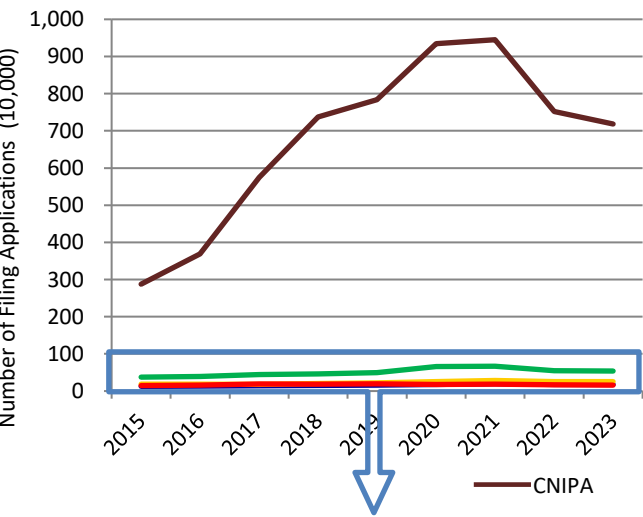


Graph T2-2: Trademark examination pendency from filing to a final disposition^{*2}

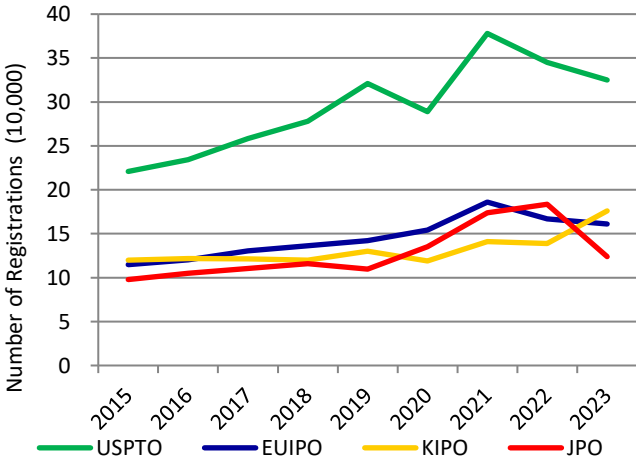
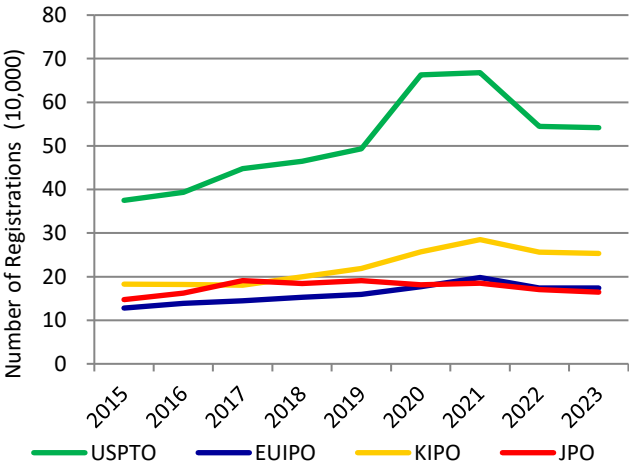
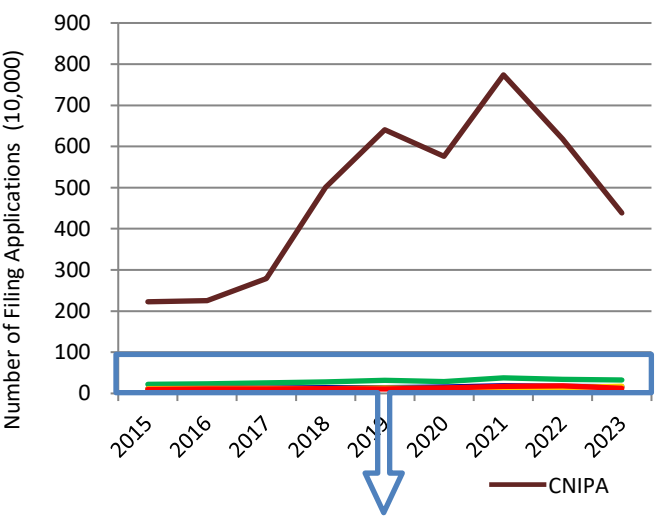


Comparison between the five IP offices

Graph T3-1: Trademark applications at the five IP offices^{*3}



Graph T3-2: Trademark registrations at the five IP offices^{*3}



^{*1} Applications that were filed on or after February 1, 2020, and satisfy certain requirements, shall be automatically subject to Fast Track Examination, and a first action will be issued within about six months from the filing date.

^{*2} Withdrawal/Abandonment or Decision of Allowance or Rejection. Cases in which the applicant extended a response period for an Office Action are excluded.

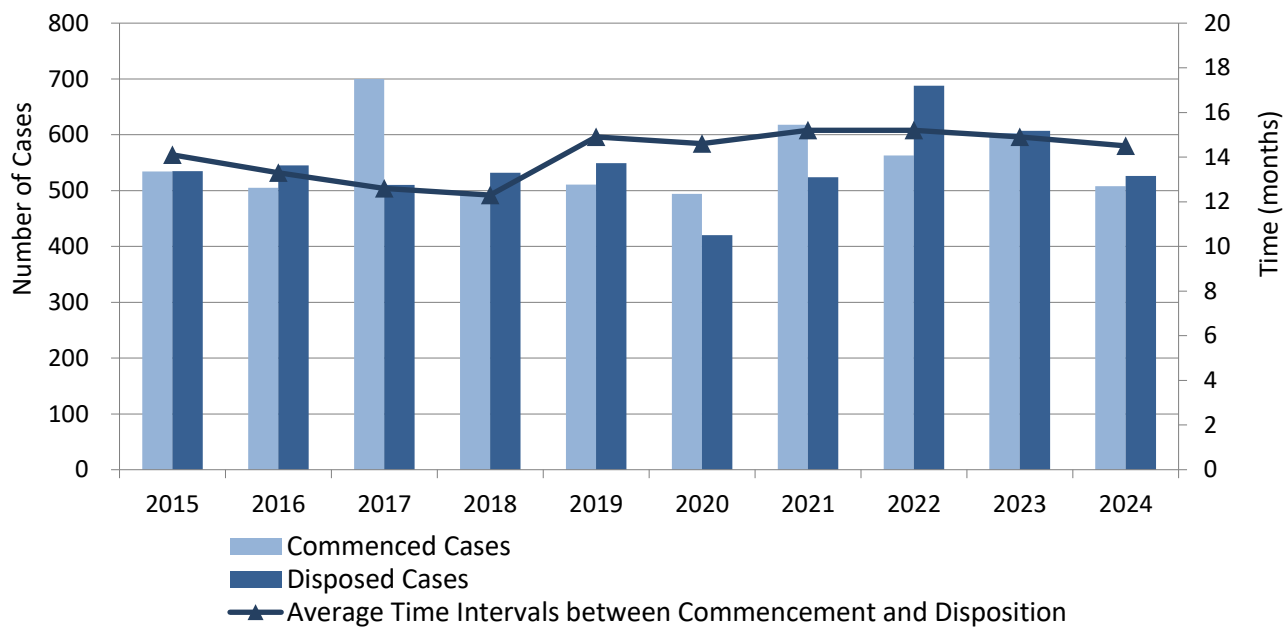
^{*3} Since CNIPA does not publish the number of trademark applications, the values are based on the number of trademark classes.

Statistics: Litigation

Infringement Suits and other IP-Related Civil Cases*¹

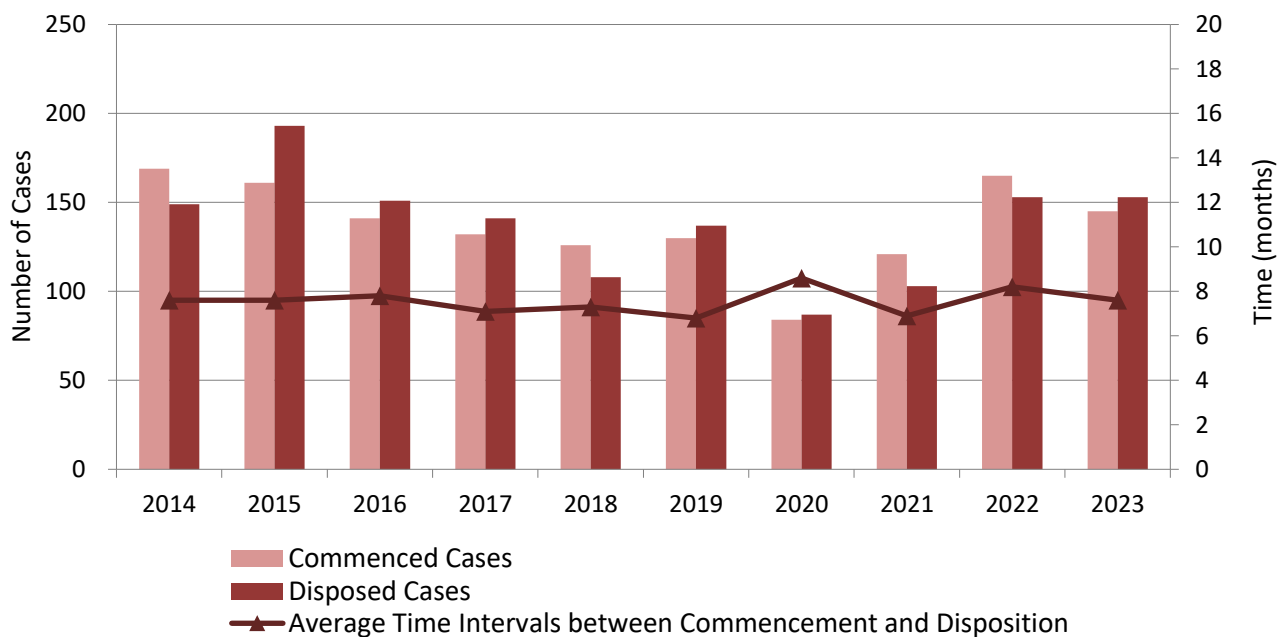
Updated

Graph L1-1: IP-Related Civil Cases at all District Courts (First Instances)



Updated

Graph L1-2: IP-Related Civil Cases at all High Courts (Second Instances)

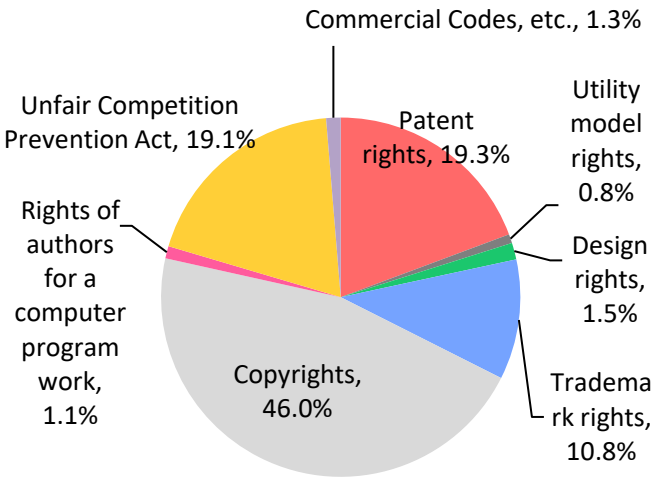


*¹ These data include all the civil cases relating to patents, utility model registrations, design registrations and trademark registrations.

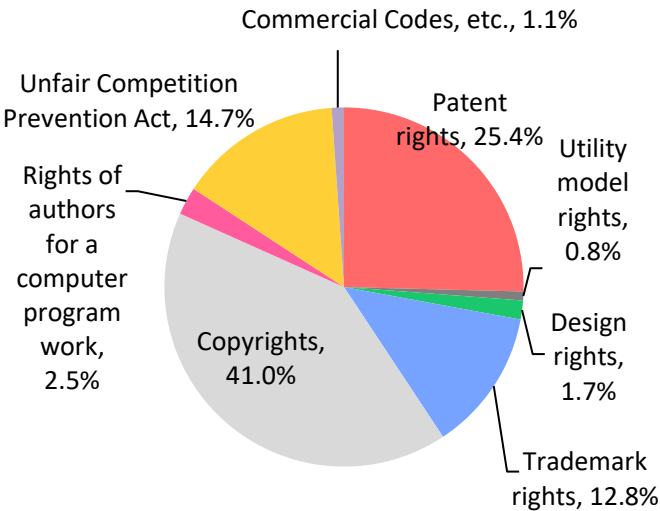
Breakdown of IP-Related Civil Cases by IP Rights*1 (2021)

Graphs L2-1: All District Courts

Commenced

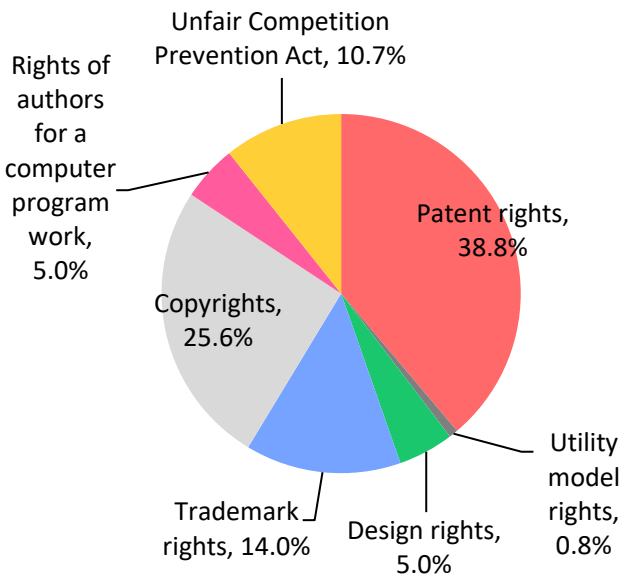


Disposed

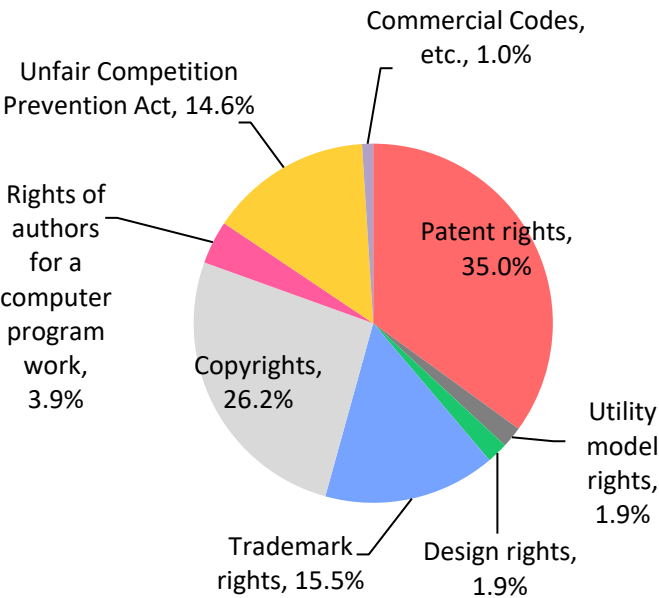


Graphs L2-2: All High Courts

Commenced



Disposed



*1 These data relate to IP-related civil cases, and thus do not include administrative litigations.

Updated

Graph L3: Breakdown of the Results of Patent Infringement Suits at the Tokyo & Osaka District Courts*¹ (2015 to 2024)

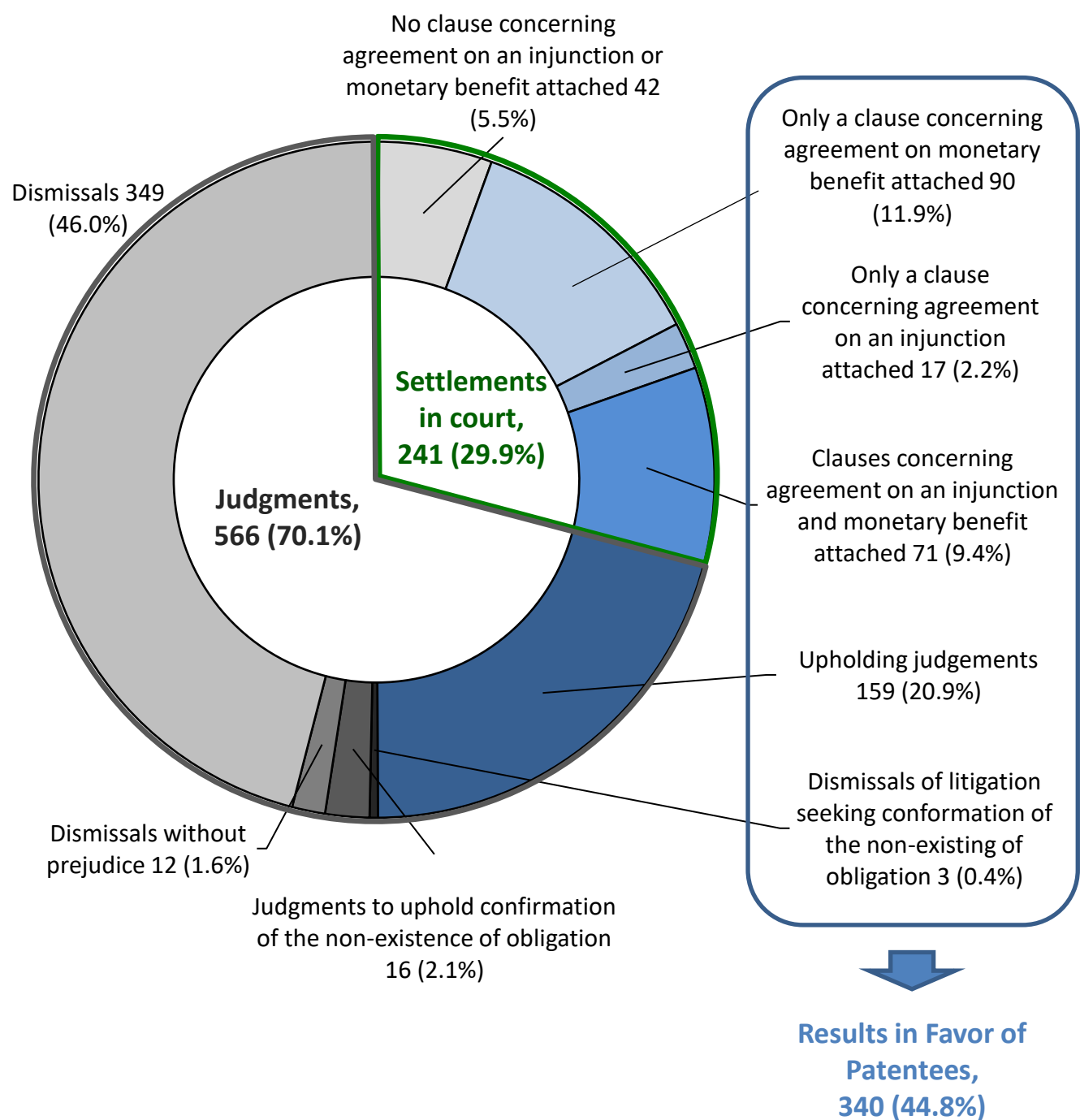


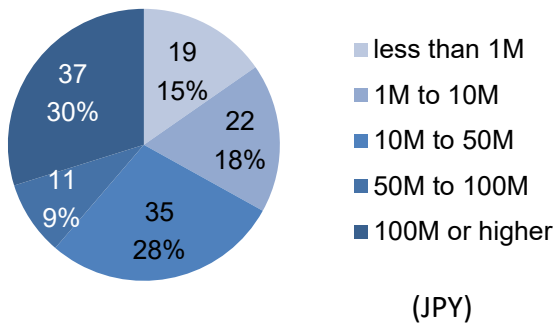
Table L1

	2014-2018	2014-2019	2014-2020	2014-2021	2014-2022	2014-2023	2015-2024
Results in favor of patentees	43.4%	44.6%	45.8%	45.8%	45.4%	45.0%	44.8%

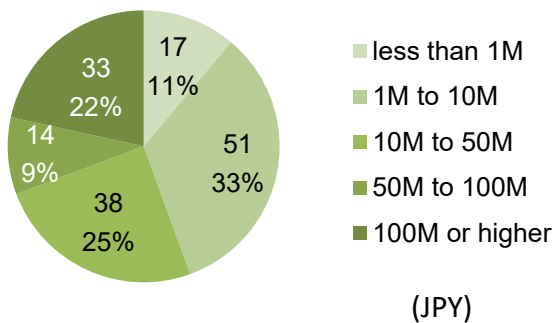
*1 Upholding judgments include judgments that partially uphold the claim.

Amounts Approved in Judgments and agreed to be paid in settlements in court in patent infringement cases (2015 to 2024)*¹

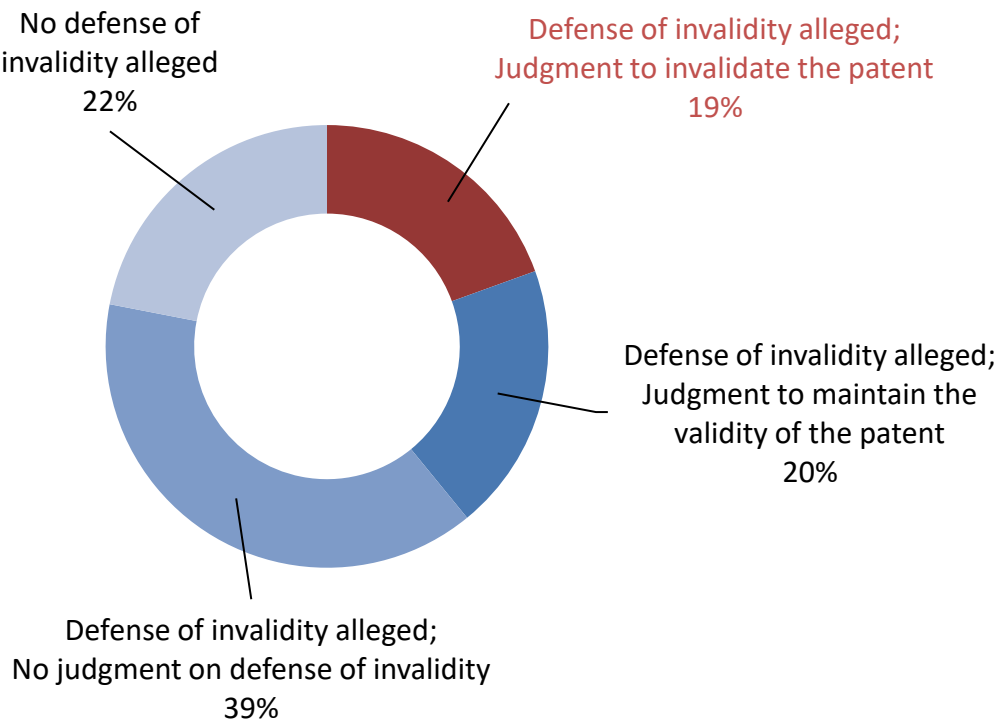
Graph L4-1: Number and proportion of amounts approved in judgments



Graph L4-2: Number and proportion of amounts agreed to be paid in settlements



Graph L5: Whether defense of invalidity was judged and how it was judged in patent infringement cases (2015 to 2024)*²



*1 Amounts related to attendant claims and court costs are not included.
*2 Each number indicated presents the total number of patent rights claimed in cases concluded by final judgments. For example, if two patent rights were claimed in one patent infringement case, the number of patent rights is counted as two.