

IP Statistics 2026

Seiwa Patent & Law

(Tokyo, JAPAN)

April 2026

Abstract: This article summarizes recent statistical data relating to matters of intellectual property, such as patents, utility models, designs and trademarks, available from the Japan Patent Office (JPO), the Supreme Court of Japan (SCJ), the Intellectual Property High Court (IPHC) and WIPO, etc. **This edition includes updates based on the JPO Status Report 2026 Edition published in March 2026, and the IP5 Statistics Report 2024 Edition, etc.**

- The total number of patent applications filed with the JPO in 2025, as well as the number of direct international applications, increased sharply to 358,317 (up 16.8% year-on-year) and 286,306 (up 22.4% year-on-year), respectively (p.2, Graph P1-1). This surge is attributable to the fact that, although filings typically remain at around 30,000 per month, approximately 80,000 patent applications were filed in December 2025 alone.
- The standard examination period from the filing of an appeal against a decision of refusal to the issuance of an appeal decision has been lengthening since 2023 (p.3, Graph P2-3).
- Since 2024, while the number of invalidation trials has remained at a high level, the number of opposition filings has shown a declining trend (p.4, Graph P4-1).
- The rate of rescission in lawsuits against *ex-parte* appeal/trial decisions in relation to patent applications has continued to decline since 2022 (p.8, Graph P7-1).
- The number of design applications filed with the JPO has remained at approximately 31,000–32,000 in recent years. In 2025, the number of international design applications designating Japan increased significantly by 16.5% year-on-year (p.10, Graph D1-1).
- Although the number of trademark applications filed with the JPO had been on a declining trend in recent years, it increased in 2025 to 168,114 (up 5.9% year-on-year), marking the first increase in five years (p.12, Graph T1-1).

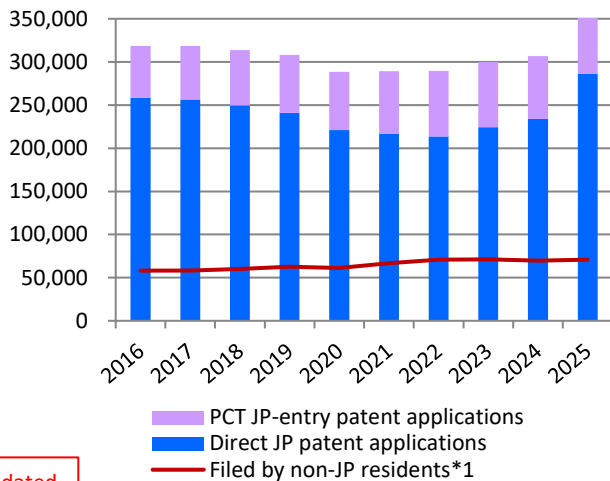
Patents Page 2
Utility Models Page 9
Designs Page 10
Trademarks Page 12
Litigation Page 14

Statistics: Patents

Patent applications and registrations at the JPO

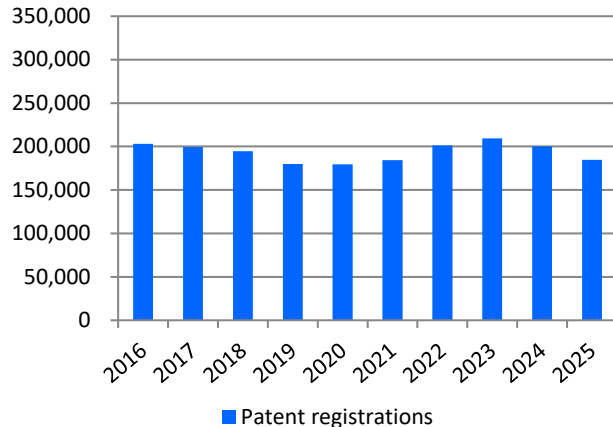
Updated

Graph P1-1: Patent applications at the JPO



Updated

Graph P1-2: Patent registrations at the JPO



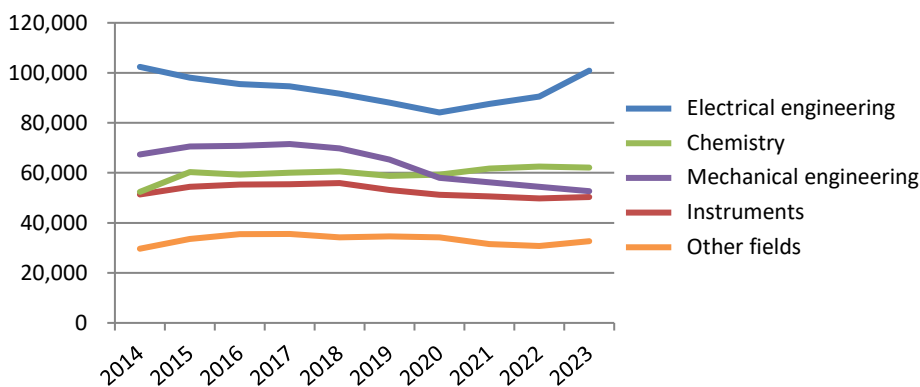
Updated

Table P1

Calendar Year	2021	2022	2023	2024	2025	y/y
JP patent applications in total	289,200	289,530	300,133	306,855	358,317	16.8%
PCT JP-entry patent applications	72,782	75,892	75,687	72,888	72,011	-1.2%
Direct JP patent applications	216,418	213,638	224,446	233,967	286,306	22.4%
Patent registrations	184,372	201,420	209,368	200,284	184,807	-7.7%

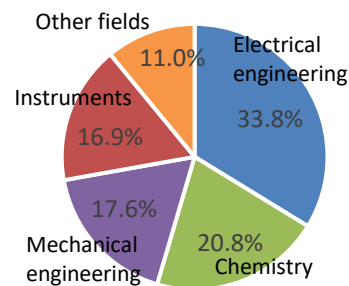
Updated

Graph P1-3: Patent applications at the JPO by sectors of technology*2



Updated

Graph P1-3: Proportions of patent applications at the JPO by sectors of technology in 2023



*1 Sum of PCT JP-entry and direct-JP patent applications filed by foreign applicants.

*2 The classification is based on the technology sectors according to the International Patent Classification (IPC and Technology Concordance Table) established by WIPO.

Electrical engineering: electrical machinery, electrical apparatus, electrical energy, audio-visual technology, telecommunications, digital communications, basic electronic elements, computer technology, IT methods for management, and semiconductors.

Chemistry: organic chemistry, agrochemicals, biotechnology, pharmaceuticals, macromolecular chemistry, polymers, food chemistry, basic materials chemistry, inorganic materials, metallurgy, surface processing, microstructure, nanotechnology, chemical engineering, and environmental chemistry.

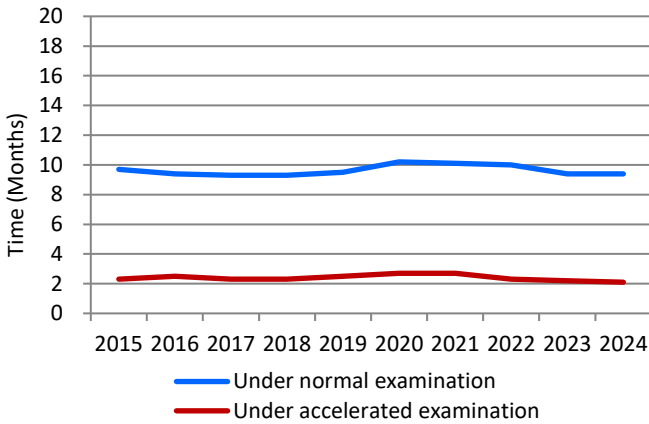
Mechanical engineering: handling machinery, machining tools, engines, pumps, turbines, textiles, paper manufacturing, other special machinery, heat treatment mechanisms, machine components, and transportation.

Instruments: optics, measurement, analysis of biological materials, control devices, and medical devices.

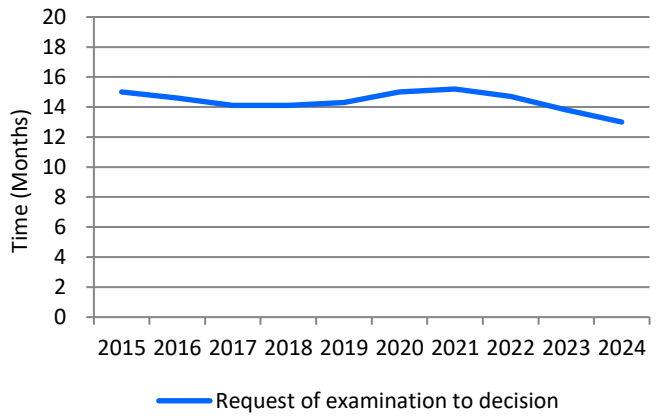
Other fields: furniture, gaming, other consumer goods, and civil engineering.

Average time of pendency

Graph P2-1: Pendency from request of examination to 1st OA

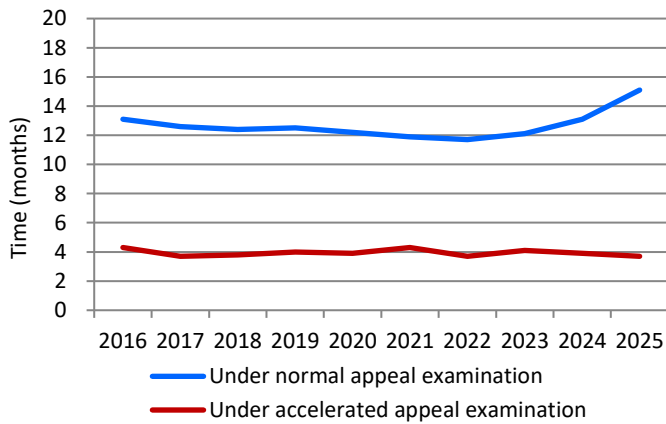


Graph P2-2: Pendency from request of examination to a final disposition*1



Updated

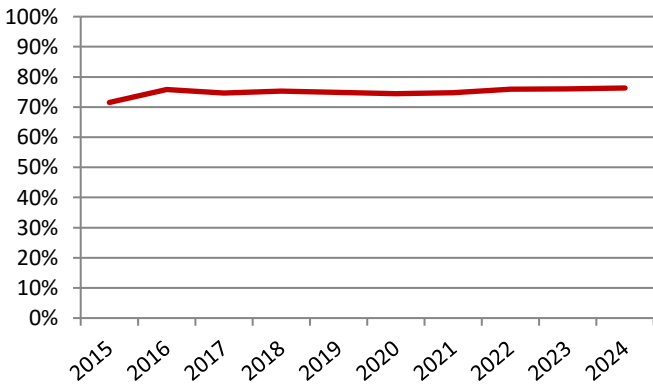
Graph P2-3: Pendency from demand of appeal trial to appeal decision



The JPO works to maintain prompt examinations by securing the necessary number of examiners and outsourcing prior art searches. At the same time, to grant high-quality rights, the JPO promotes initiatives aimed at achieving the world’s highest quality patent examinations based on the “Patent Examination Quality Policy” and the “Quality Management Manual for Patent Examination”, which outlines quality control measures and their implementation framework.

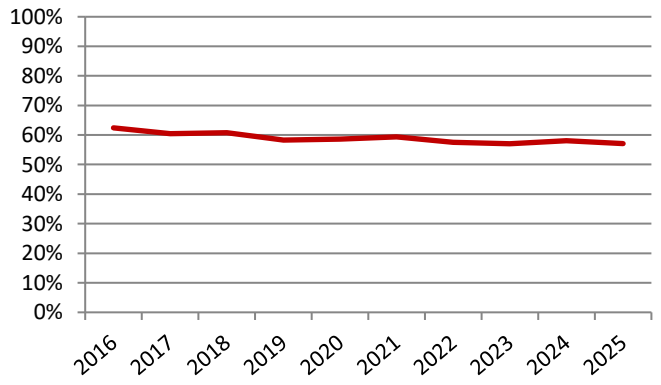
Grant rate at the JPO

Graph P3-1: Grant rate at examination*2



Updated

Graph P3-2: Grant rate at preappeal reexamination*3



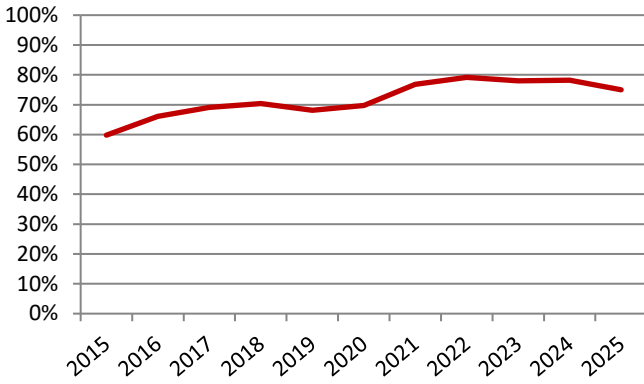
*1 Withdrawal/Abandonment or Decision of Allowance or Decision of Rejection. Cases in which the applicant extended a response period for an Office Action are excluded.

*2 Grant rate at examination = decisions of grant at examination / (decisions of grant at examination + decisions of rejection at examination + withdrawal or abandonment after request for examination)

*3 Grant rate at pretrial reexamination = decisions of grant at pretrial reexamination / (decisions of grant at pretrial reexamination + cases transferred to appeal + withdrawal or abandonment at pretrial reexamination)

Updated

Graph P3-3: Grant rate at appeal*1

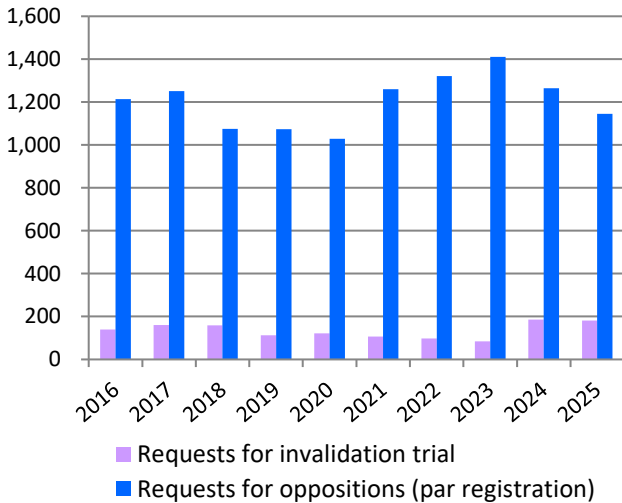


The patent grant rates in examination, pre-appeal and appeal examination at the JPO have remained consistently high in recent years. This trend can be attributed to several factors, including a shift in corporate IP strategies from focusing on quantity to prioritizing quality.

Opposition & Invalidation Trial

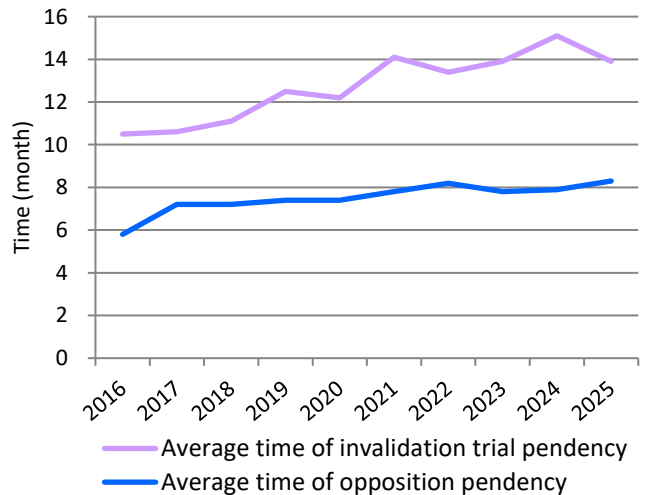
Updated

Graph P4-1: Requests for opposition & invalidation trial

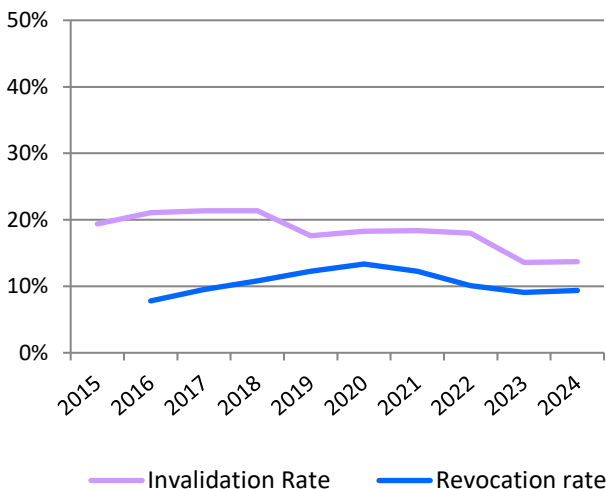


Updated

Graph P4-2: Average time of pendency at opposition & invalidation trial*2



Graph P4-3: Rate of invalidation and revocation of patent (all or some claims)*3

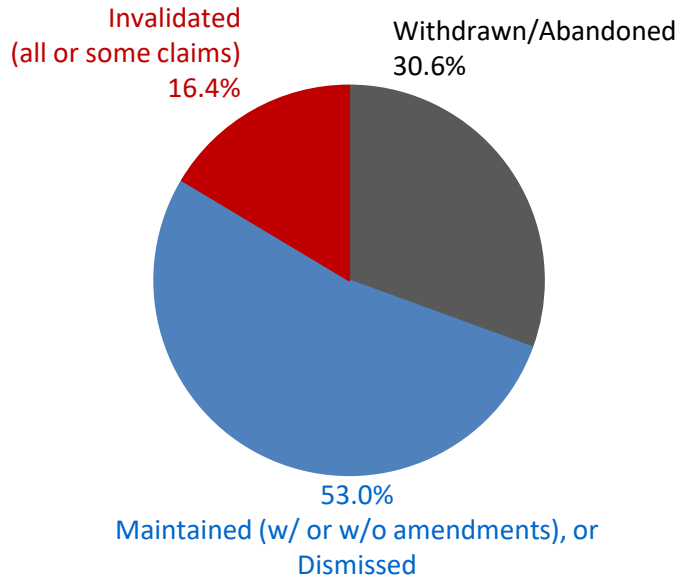
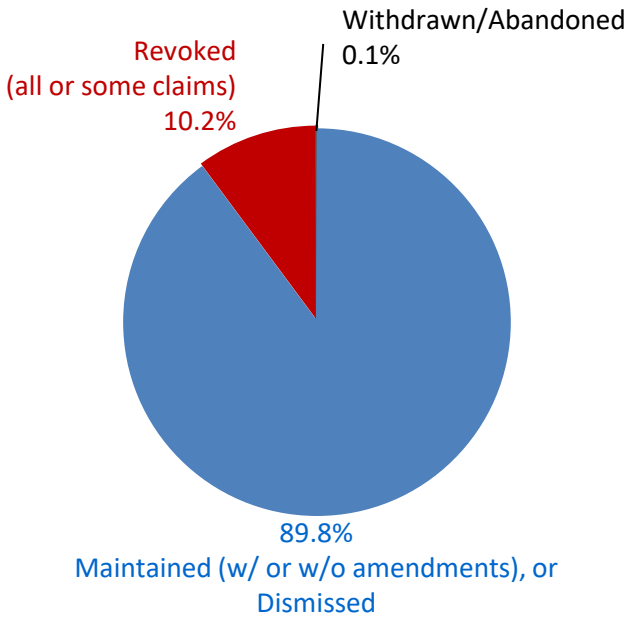


*1 Grant rate at appeal = appeal decisions of grant / (appeal decisions of grant + appeal decisions of rejection)
 *2 Opposition: from request to Notice of Reasons for Revocation (Advance Notice of Decision) or Decision Invalidation Trial: from request to Advance notice of Decision or Decision
 *3 Rate of Invalidation of Patent (all or some claims) = Trial Decisions to Invalidate all or some claims of Patent / (Trial Decisions to Invalidate all or some claims of Patent + Trial Decisions to Maintain Patent)
 Rate of Revocation of Patent (all or some claims) = Trial Decisions to Revoke all claims of Patent / (Trial Decisions to Revoke all or some claims of Patent + Trial Decisions to Maintain Patent)
 The rate of invalidation and rate of revocation are calculated as a three-year moving average.

Breakdown of Oppositions & Invalidation Trials Results

Graph P4-4: Results of Oppositions

Graph P4-5: Results of Invalidation Trials



Outcomes of oppositions disposed from Jan. 2020 to Dec. 2024

Outcomes of Invalidation trials disposed from Jan. 2020 to Dec. 2024

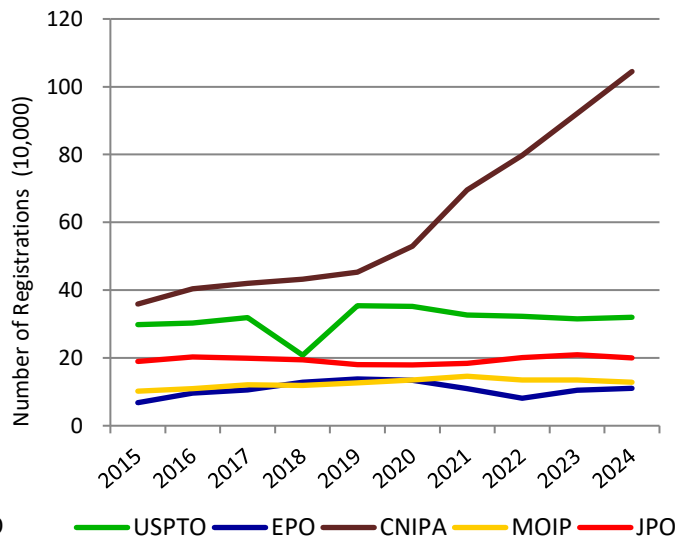
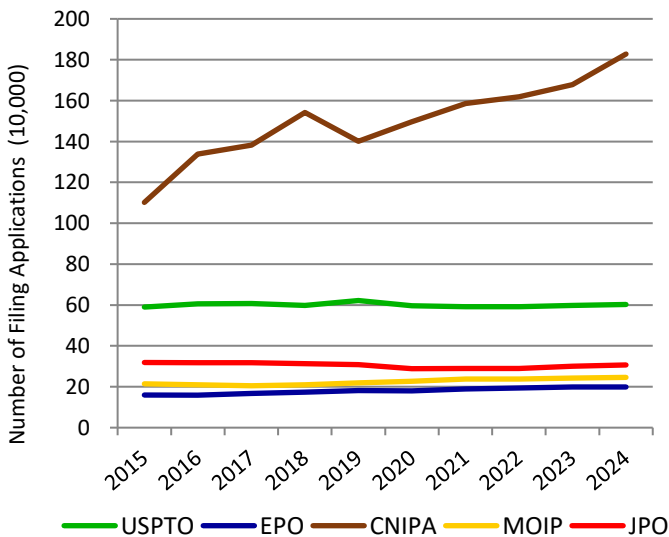
Comparison between the five IP offices

Graph P5-1: Patent applications at the five IP offices

Graph P5-2: Patent registrations at the five IP offices

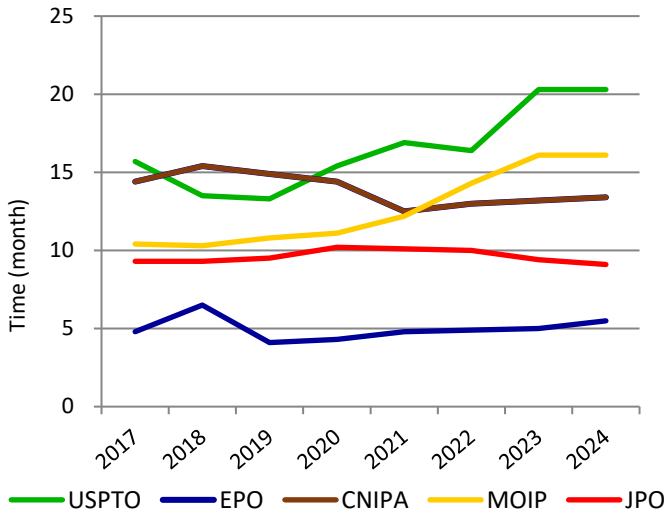
Updated

Updated



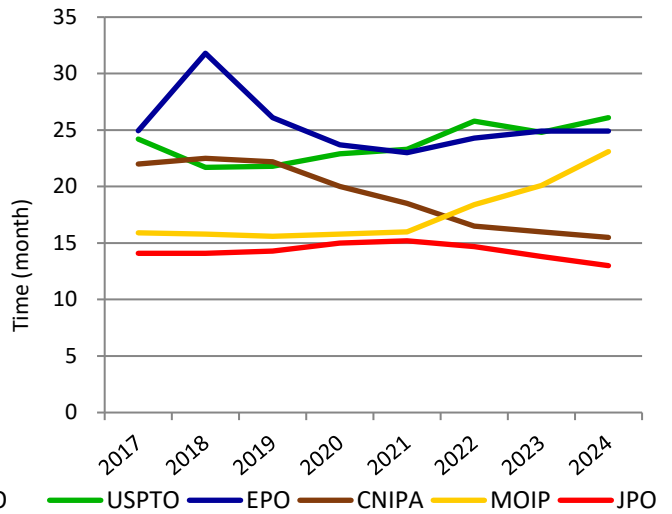
Updated

Graph P5-3: Average time of examination pendency to 1st OA*1



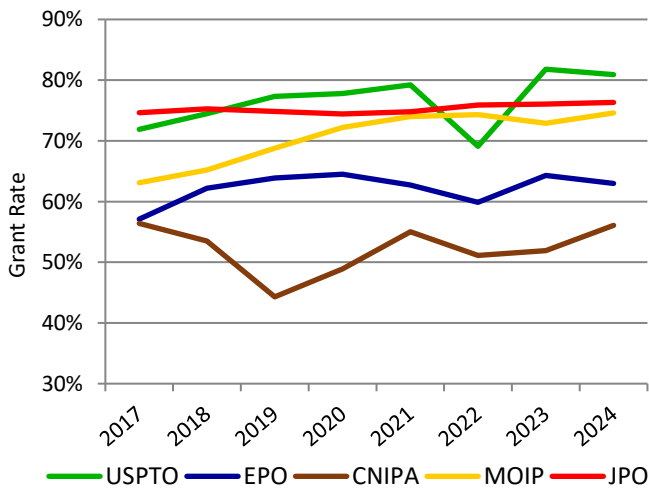
Updated

Graph P5-4: Average time of examination pendency to disposition*2



Updated

Graph P5-5: Patent grant rate at the five IP offices*3



*1 Average time of examination pendency to 1st OA:
 JPO = average time of from requesting examination to 1st OA
 USPTO = average time of from filing date to 1st OA
 EPO = median time of from filing date to Extended European Search Report
 KIPO = average time of from requesting examination to 1st OA
 CNIPA = average time of from starting examination to 1st OA

*2 Average time of examination pendency to decision:
 JPO = average time of from requesting examination to withdrawal, abandonment, or Decision of Allowance or Decision of Rejection
 USPTO = average time of from filing date to abandonment or a final disposal (including reexamination)
 EPO = median time of from starting examination to final disposal
 KIPO = (total examination period of patent applications disposed in the year) / (total number of patent applications disposed in the year)

*3 Grant Rate at Examination:

JPO = Decision of Grant at Examination / (Decision of Grant at Examination + Decision of Rejection at Examination + Withdrawal or Abandonment after Request for Examination)

USPTO = Patent Grants / Patent Applications

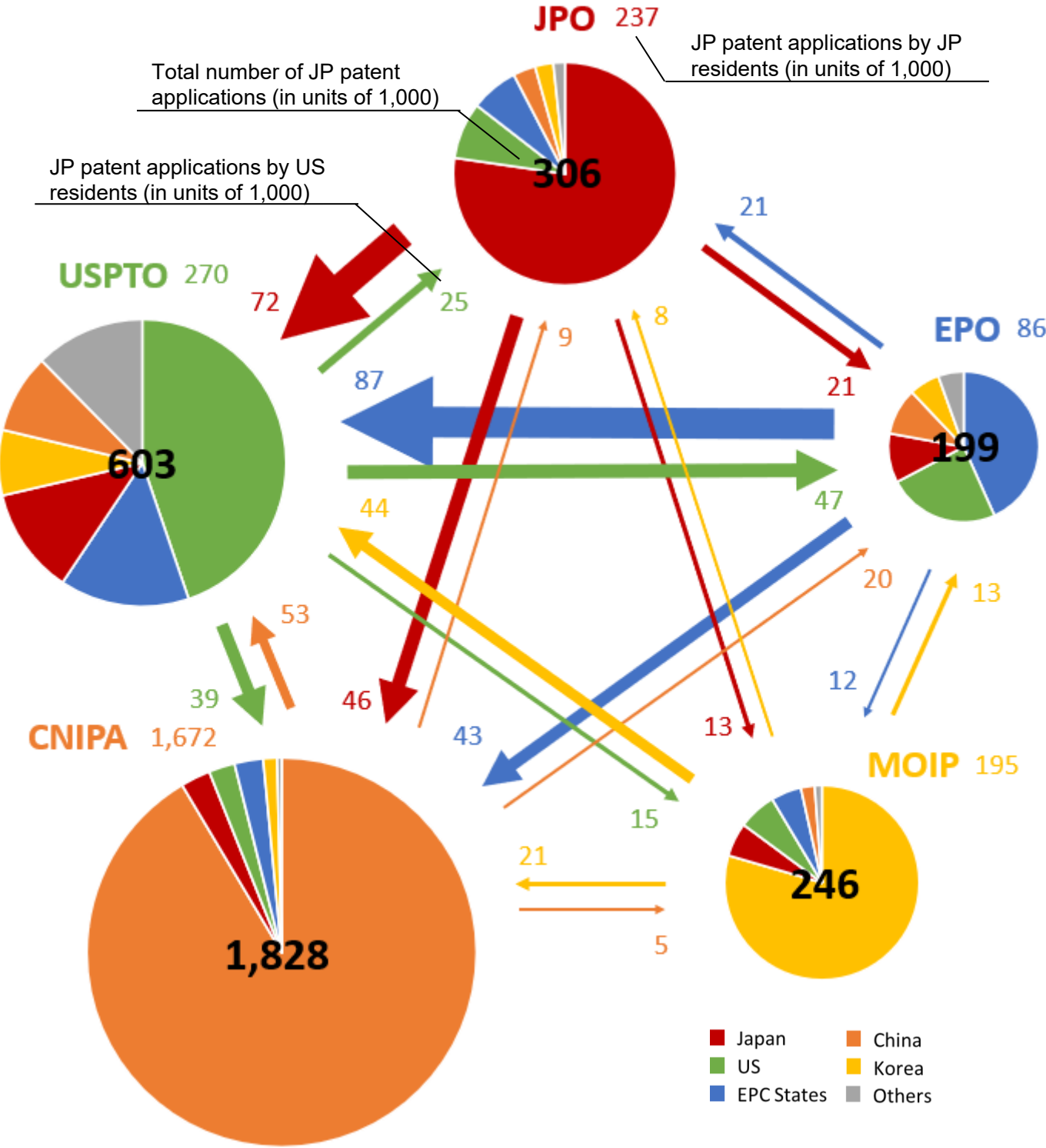
EPO = Decision of Grant at Examination / (Decision of Grant at Examination + Decision of Rejection at Examination + Abandonment)

KIPO = Decision of Grant at Examination / (Decision of Grant at Examination + Decision of Rejection at Examination + Withdrawal after Request for Examination)

CNIPA does not disclose the definition of the Grant Rate at Examination.

Updated

Graph P6: Patent applications filed at the five IP offices by origin*1 (in 2024)

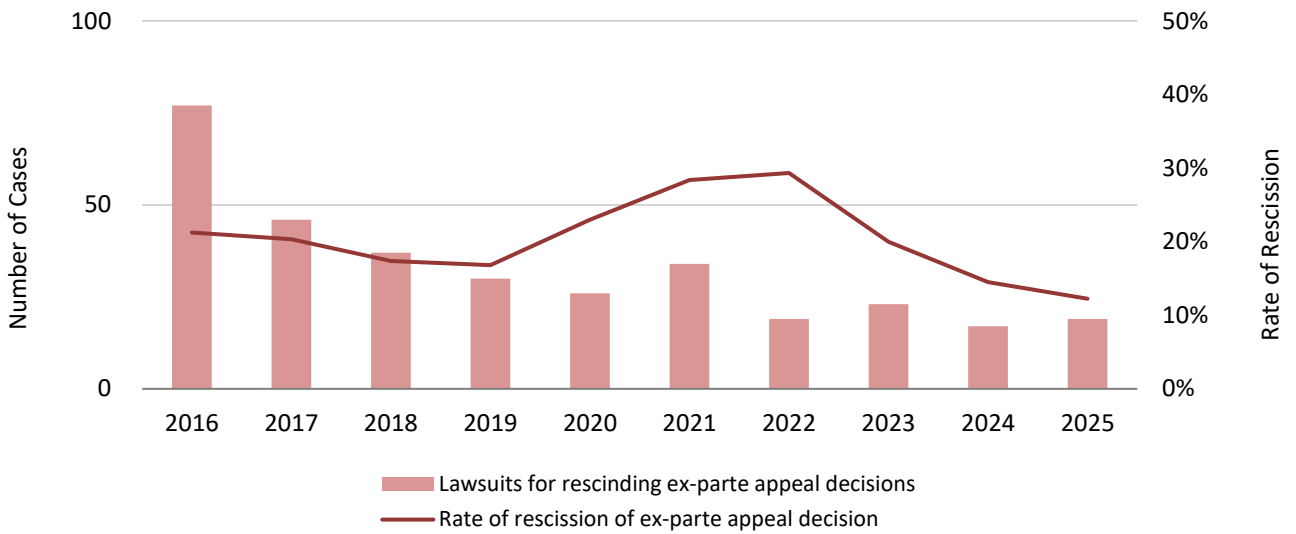


*1 The origin is based on residence of first named applicants. The amounts were rounded down and given in units of 1,000.

Lawsuits against the JPO's Appeal/Trial Decisions in relation to Patent

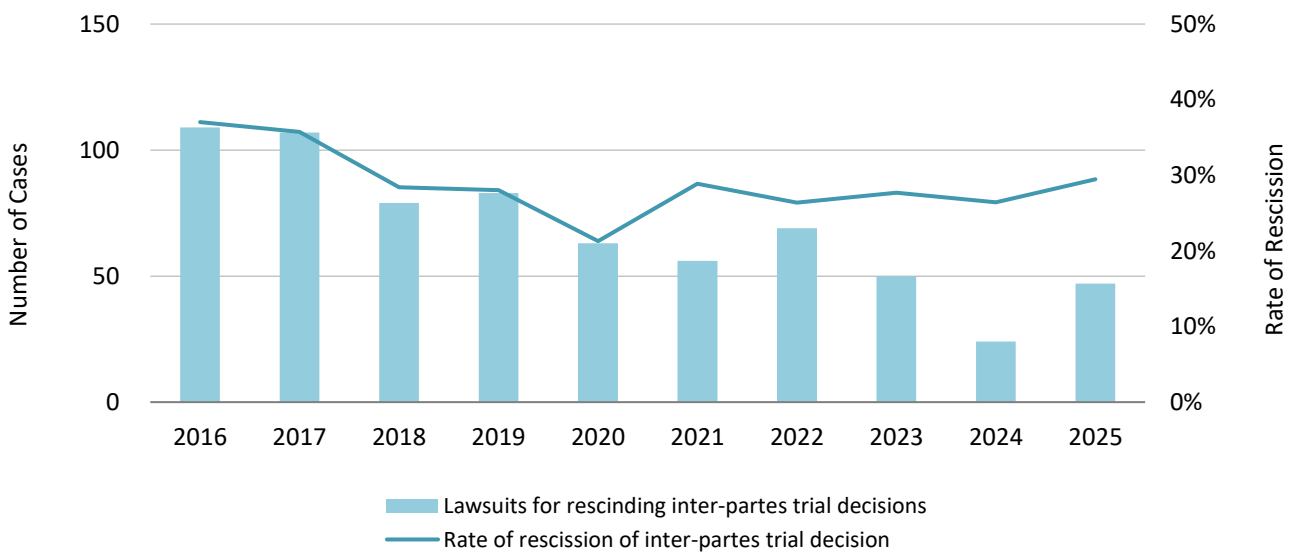
Updated

Graph P7-1: Lawsuits against *Ex-Parte* Appeal/Trial Decisions in relation to Patent Applications and their Total Rate of Rescission*¹



Updated

Graph P7-2: Lawsuits against *Inter-Partes* Appeal/Trial Decisions in relation to Patent Rights and their Total Rate of Rescission*²



*1 These data include lawsuits against Trial Decisions of Rejection and Dismissal of Amendment in relation to patent applications. The rate of rescission is a three-year moving average.

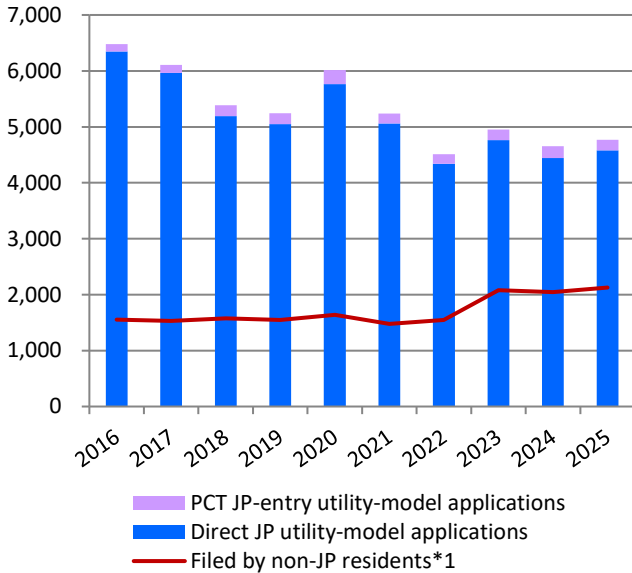
*2 These data include lawsuits against Trial Decisions of Invalidation and Correction Trials in relation to patent rights. The rate of rescission is a three-year moving average.

Statistics: Utility Models

Utility model applications and registrations at the JPO

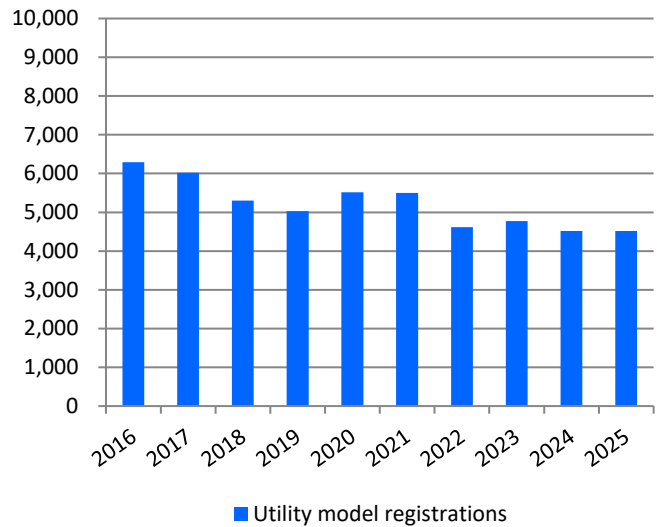
Updated

Graph U1-1: Utility model applications at the JPO



Updated

Graph U1-2: Utility model registrations at the JPO



Updated

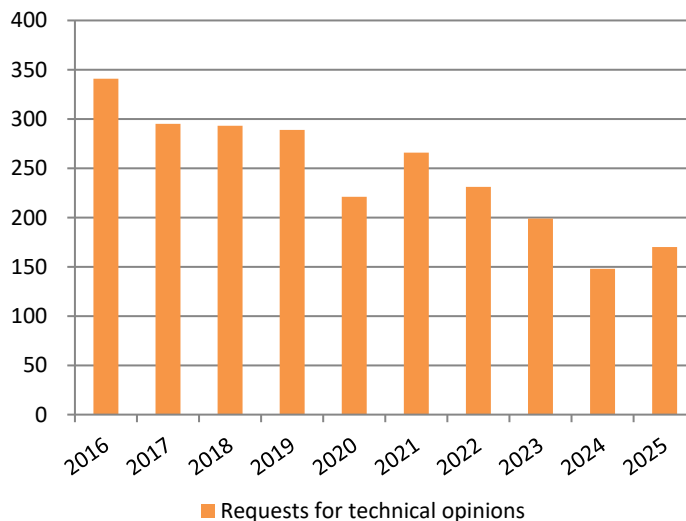
Table U1

Calendar Year	2021	2022	2023	2024	2025	y/y
JP utility-model applications in total	5,239	4,513	4,949	4,655	4,768	2.4%
PCT JP-entry utility-model applications	180	173	186	213	191	-10.3%
Direct JP utility-model applications	5,059	4,340	4,763	4,442	4,577	3.0%
Utility model registrations	5,499	4,615	4,772	4,514	4,517	0.1%
Requests for technical opinions	266	231	199	148	170	14.9%

Requests for Technical Opinions*2

Updated

Graph U2



*1 Sum of PCT JP-entry and direct-JP utility-model applications filed by foreign applicants.

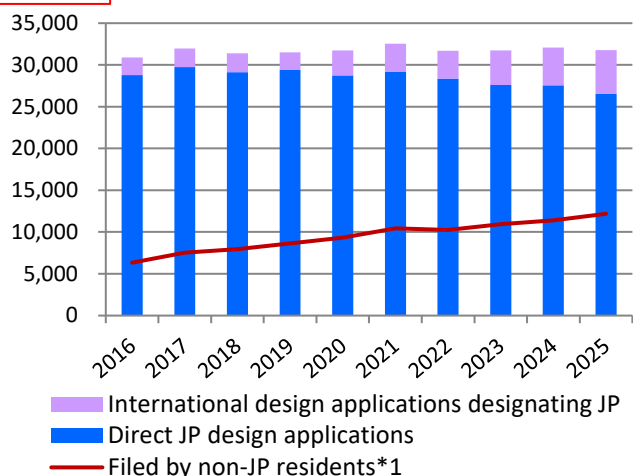
*2 A utility model right owner cannot enforce its utility model right without warning an opposing party in advance with indicating a technical opinion by the examiner.

Statistics: Designs

Design applications and registrations at the JPO

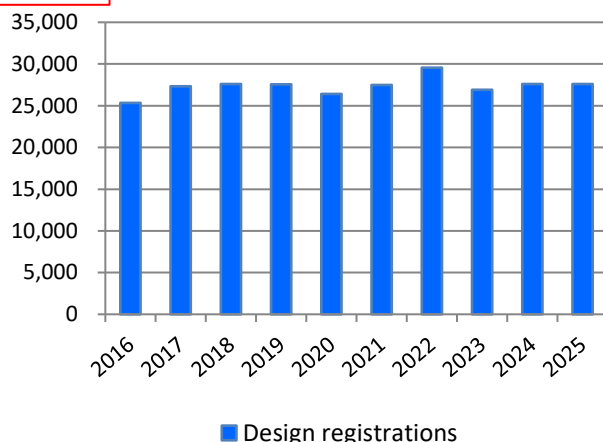
Updated

Graph D1-1: Design applications at the JPO



Updated

Graph D2-2: Design registrations at the JPO



Updated

Table D1-1

Calendar Year	2021	2022	2023	2024	2025	y/y
JP design applications in total	32,525	31,711	31,747	32,065	31,781	-0.9%
International design applications designating JP	3,303	3,353	4,160	4,518	5,264	16.5%
Direct JP design applications	29,222	28,358	27,587	27,547	26,517	-3.7%
Design registrations	27,490	29,540	26,908	27,598	27,613	0.1%

Updated

The number of applications and registrations for new types of design (from April 1, 2020 to March 2, 2026)

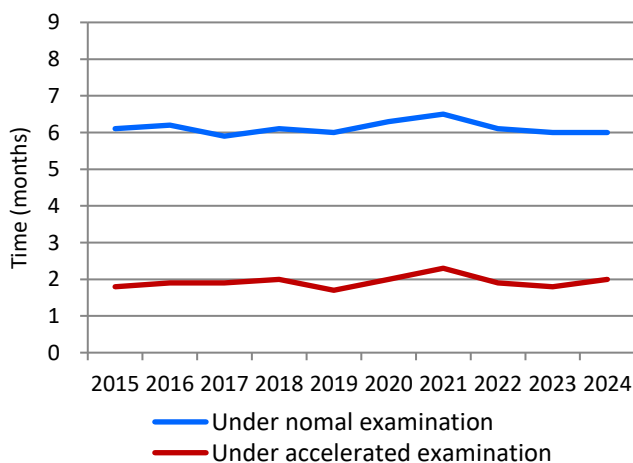
Table D1-2

	Applications	Registrations
Graphic Images	7,953	6,338
Buildings	2,158	1,762
Interior Designs	1,396	1,043

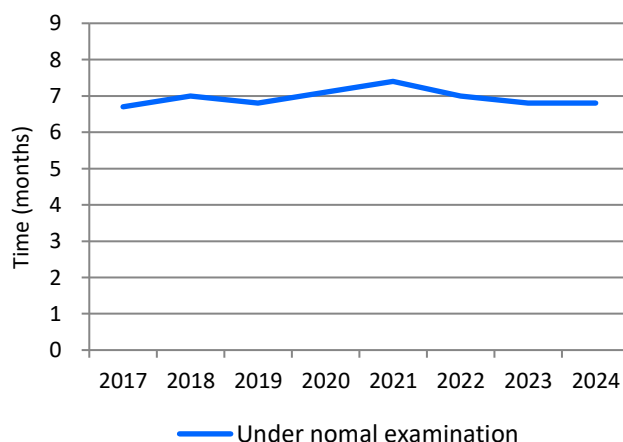
It became possible to protect graphic images, buildings and interior designs from April 1, 2020. This table shows the number of applications and registrations for these new types of design from April 1, 2020 to March 2, 2026.

Average time of pendency

Graph D2-1: Examination pendency to 1st OA



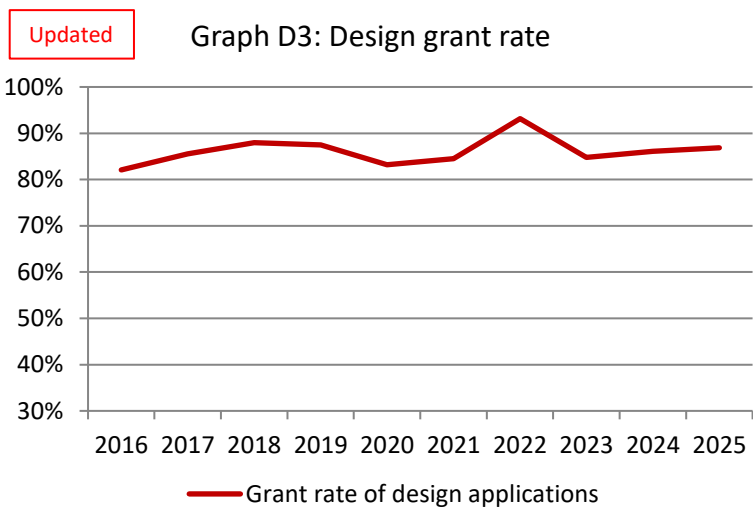
Graph D2-2: Design examination pendency to a final disposition*2



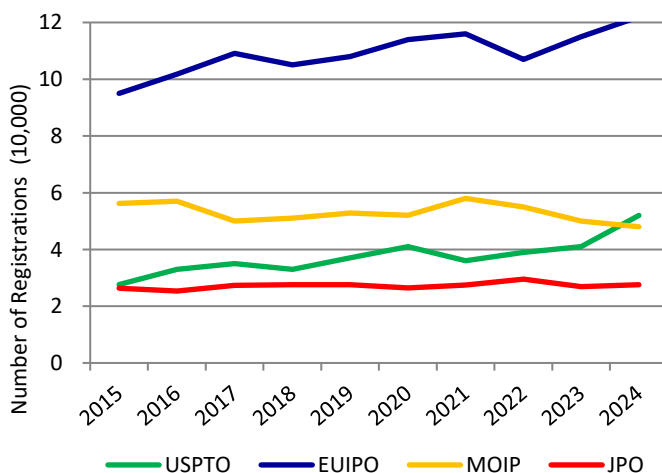
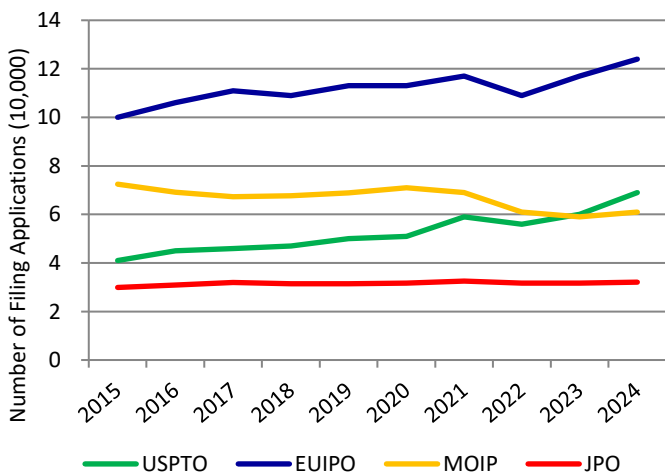
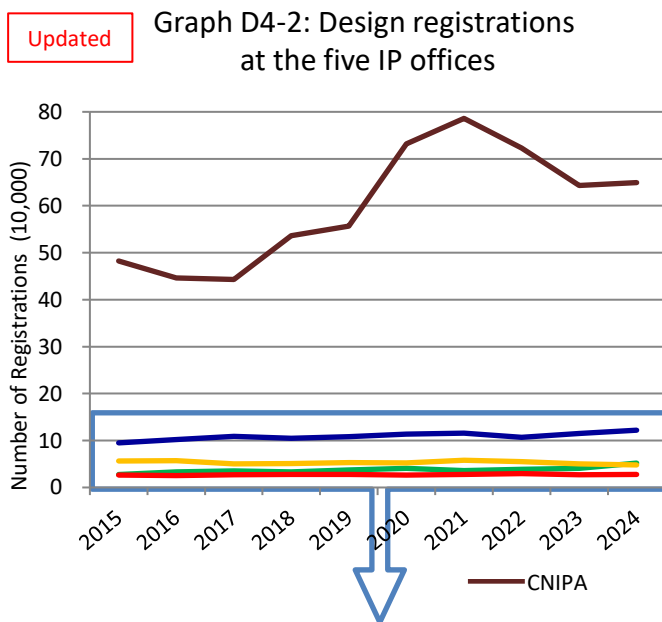
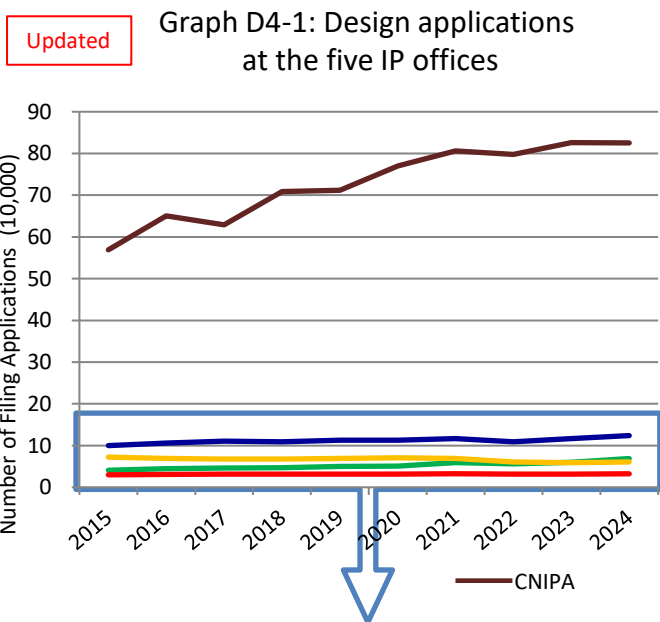
*1 Sum of international design applications designating JP and direct-JP design applications filed by foreign applicants.

*2 Withdrawal/Abandonment or Decision of Allowance or Decision of Rejection. Cases in which the applicant extended a response period for an Office Action are excluded.

Grant rate at examination of design applications*¹



Comparison between the five IP offices



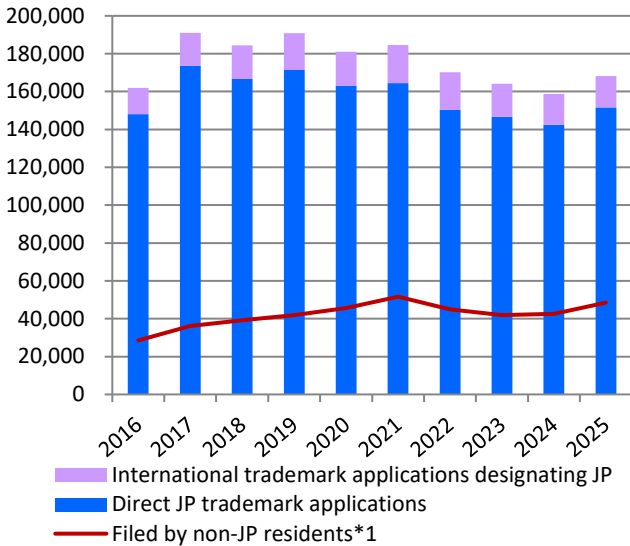
*1 Grant Rate of Design Applications = Design Registrations / Design Applications

Statistics: Trademarks

Trademark applications and registrations at the JPO

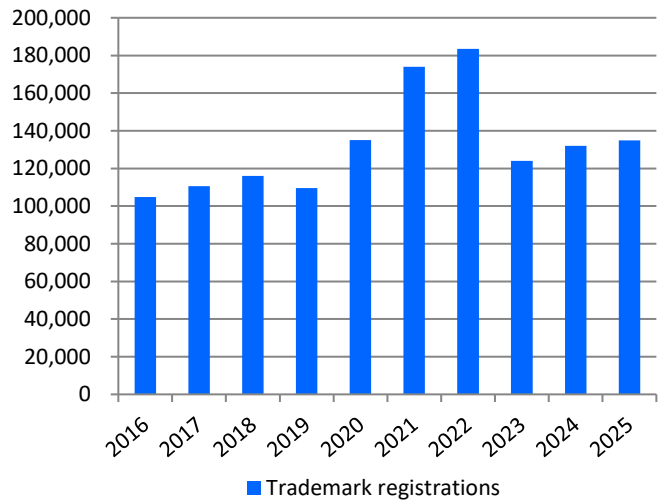
Updated

Graph T1-1: Trademark applications at the JPO



Updated

Graph T1-2: Trademark registrations at the JPO



Updated

Table T1-1

	Calendar Year	2021	2022	2023	2024	2025	y/y
JP trademark applications in total		184,631	170,275	164,061	158,792	168,114	5.9%
International trademark applications designating JP		20,094	19,769	17,397	16,252	16,570	2.0%
Direct JP trademark applications		164,537	150,506	146,664	142,540	151,544	6.3%
Trademark registrations		173,895	183,546	124,074	132,011	134,798	2.1%

Trademark applications for non-traditional marks*2

Table T1-2

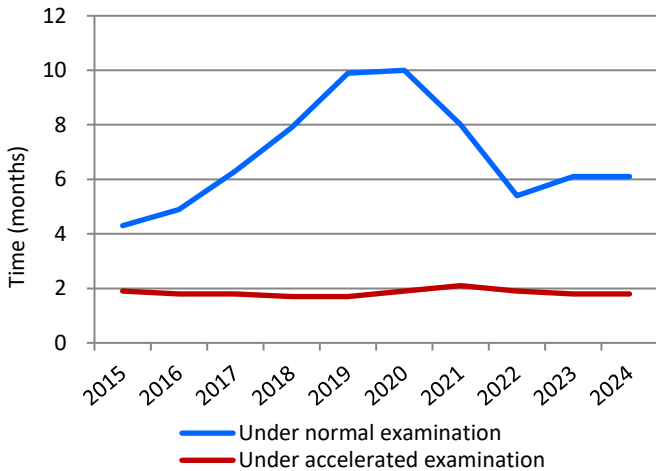
	Calendar Year	2015	2016	2017	2018	2019	2020	2021	2022	2023	2024
3D / Applications		308	267	295	276	254	285	337	311	274	272
Registrations		174	150	141	137	125	155	160	202	159	156
Sound / Applications		365	133	80	51	37	20	22	19	21	31
Registrations		21	74	113	49	32	28	18	11	16	12
Motion / Applications		80	38	8	26	24	18	22	18	20	18
Registrations		13	47	31	8	17	20	16	27	10	19
Position / Applications		243	80	51	41	44	40	44	30	32	40
Registrations		5	14	21	19	16	15	13	28	27	17
Color / Applications		448	42	22	19	6	5	8	7	11	6
Registrations		0	0	2	5	1	0	0	1	0	2
Hologram / Applications		14	3	0	2	1	0	0	1	0	0
Registrations		1	8	2	1	2	1	0	1	0	0

*1 Sum of international trademark applications designating JP and direct-JP trademark applications filed by foreign applicants.

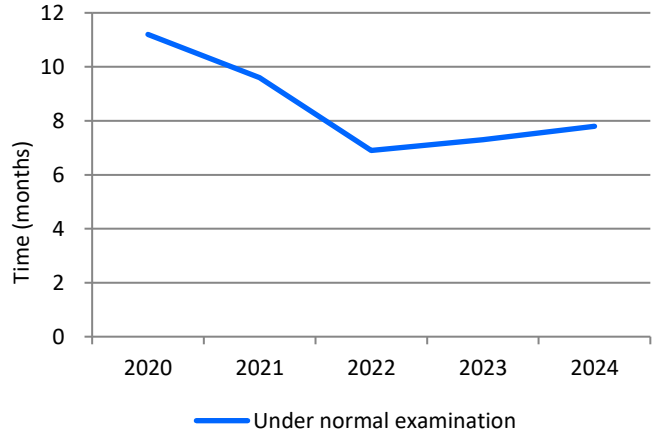
*2 These data do not include the numbers of international trademark applications designating JP.

Average time of pendency

Graph T2-1: Trademark examination pendency from filing to 1st OA^{*1}



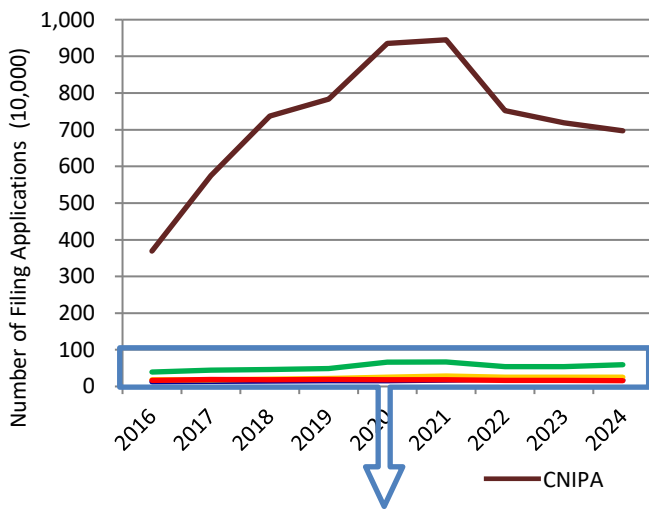
Graph T2-2: Trademark examination pendency from filing to a final disposition^{*2}



Comparison between the five IP offices

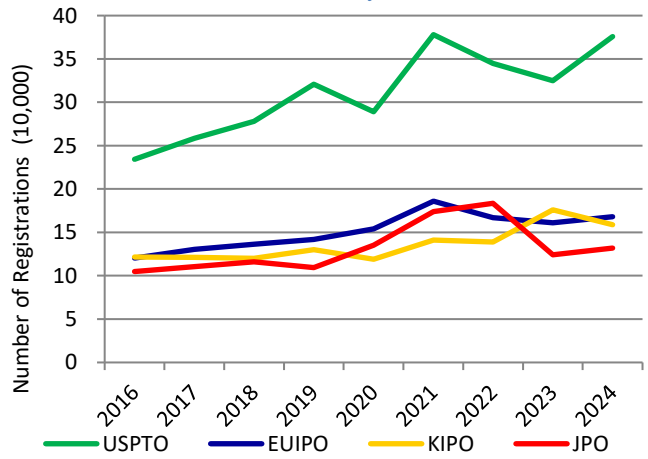
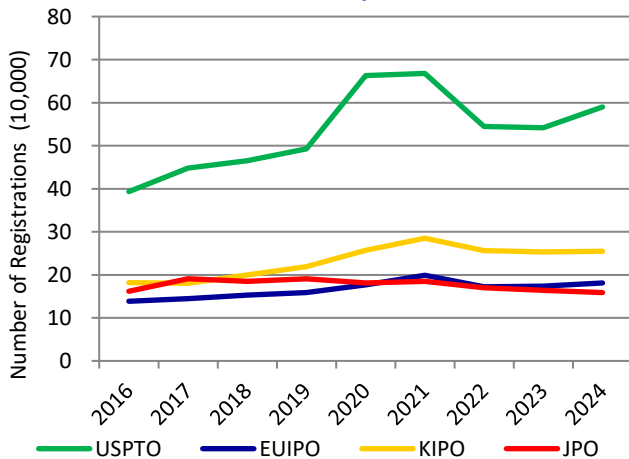
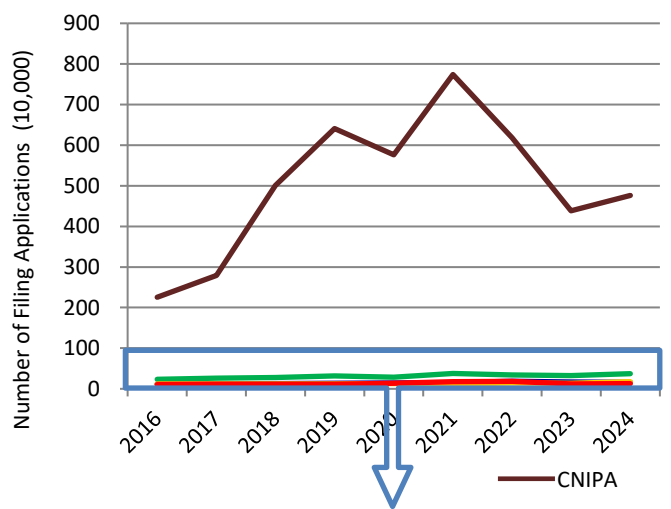
Updated

Graph T3-1: Trademark applications at the five IP offices^{*3}



Updated

Graph T3-2: Trademark registrations at the five IP offices^{*3}



*1 Applications that were filed on or after February 1, 2020, and satisfy certain requirements, shall be automatically subject to Fast Track Examination, and a first action will be issued within about six months from the filing date.

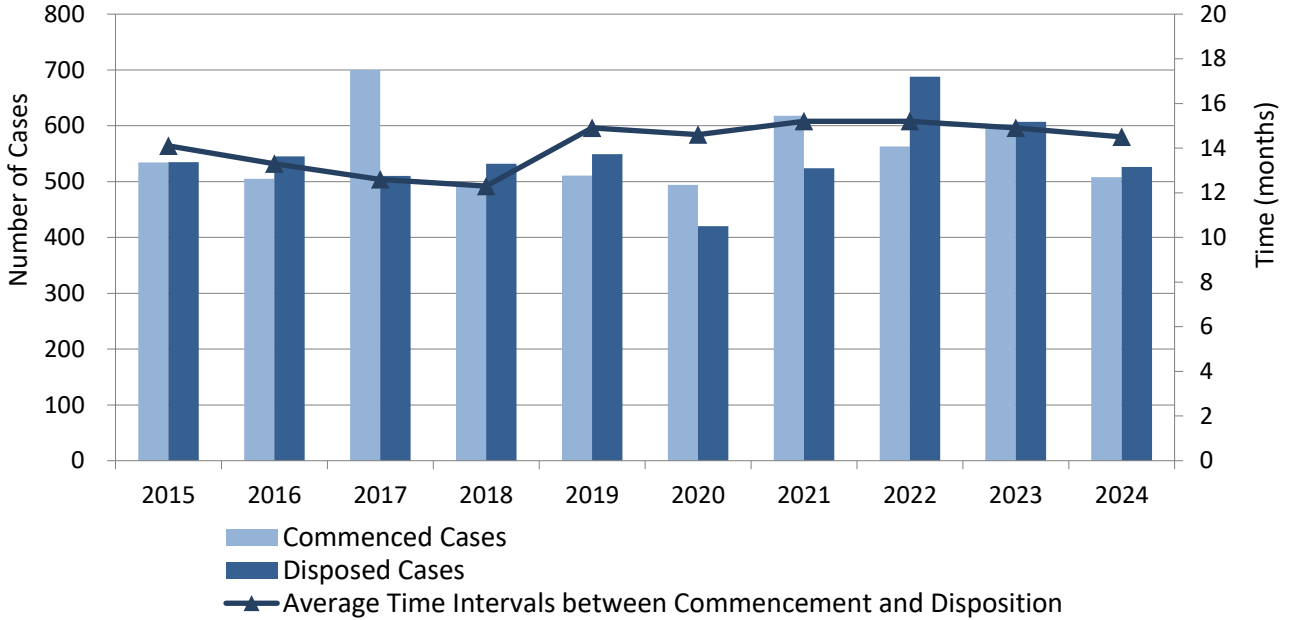
*2 Withdrawal/Abandonment or Decision of Allowance or Rejection. Cases in which the applicant extended a response period for an Office Action are excluded.

*3 Since CNIPA does not publish the number of trademark applications, the values are based on the number of trademark classes.

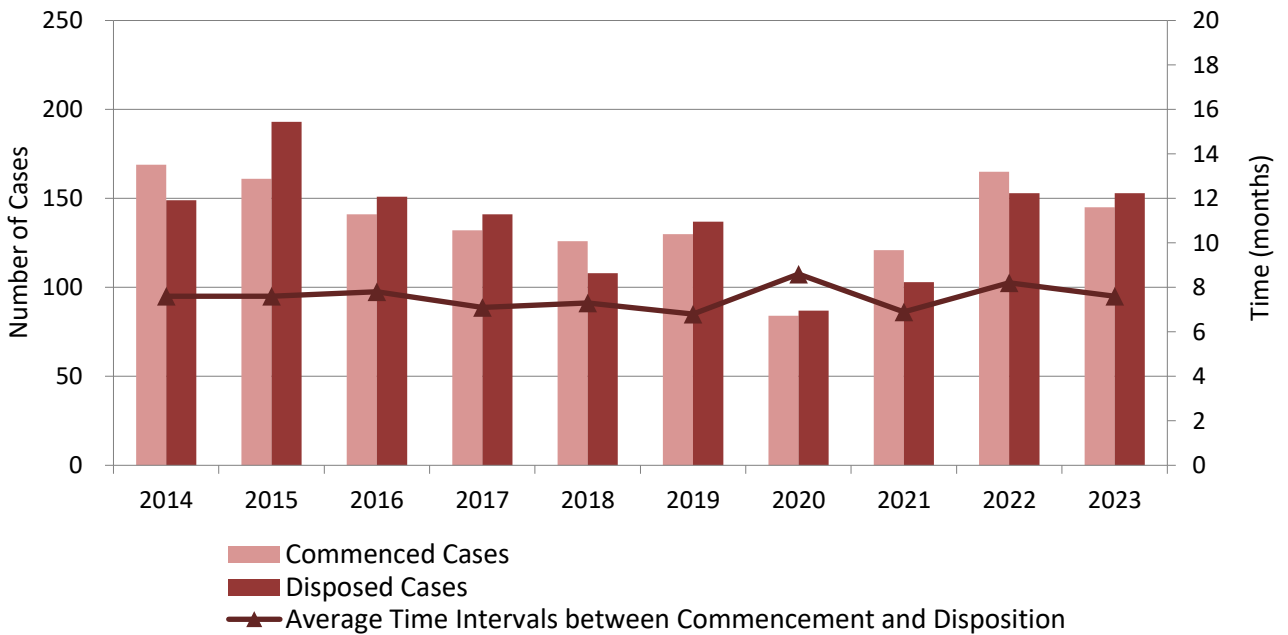
Statistics: Litigation

Infringement Suits and other IP-Related Civil Cases*1

Graph L1-1: IP-Related Civil Cases at all District Courts (First Instances)



Graph L1-2: IP-Related Civil Cases at all High Courts (Second Instances)

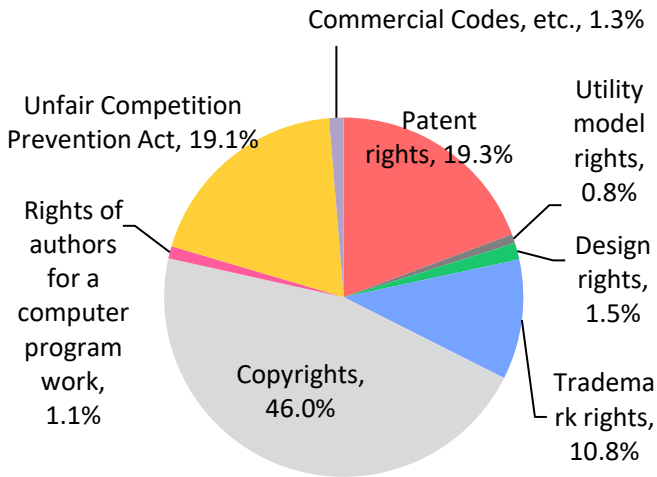


*1 These data include all the civil cases relating to patents, utility model registrations, design registrations and trademark registrations.

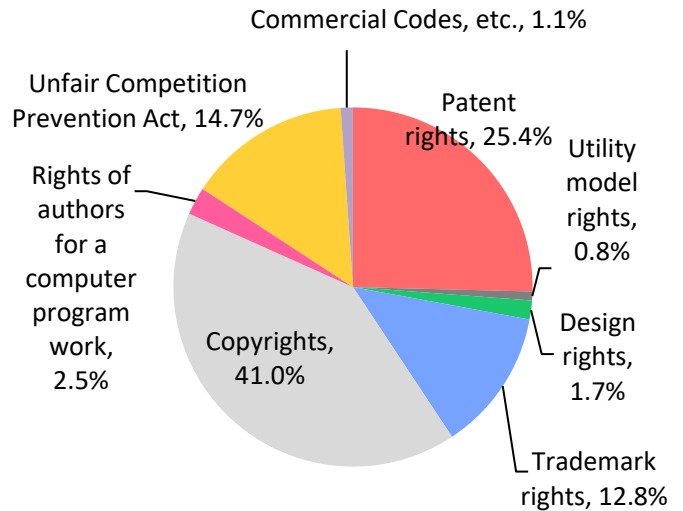
Breakdown of IP-Related Civil Cases by IP Rights*1 (2021)

Graphs L2-1: All District Courts

Commenced

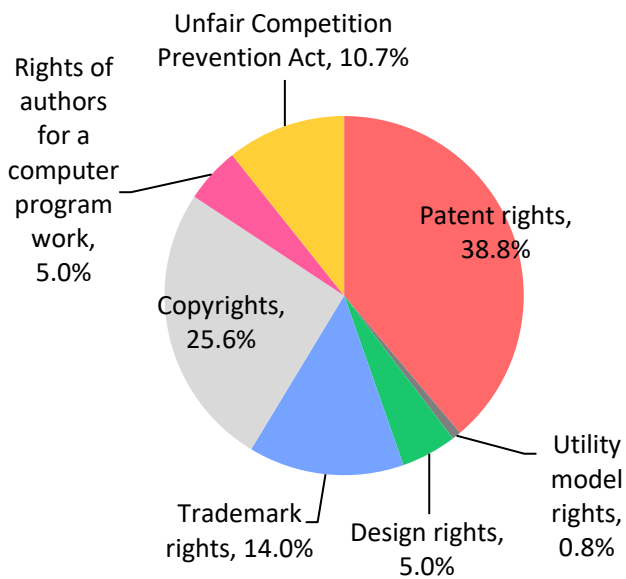


Disposed

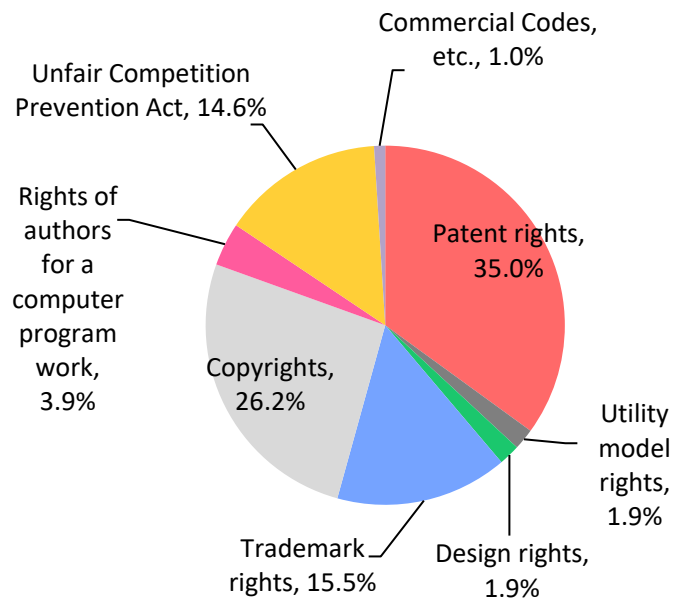


Graphs L2-2: All High Courts

Commenced



Disposed



*1 These data relate to IP-related civil cases, and thus do not include administrative litigations.

Graph L3: Breakdown of the Results of Patent Infringement Suits at the Tokyo & Osaka District Courts*¹ (2015 to 2024)

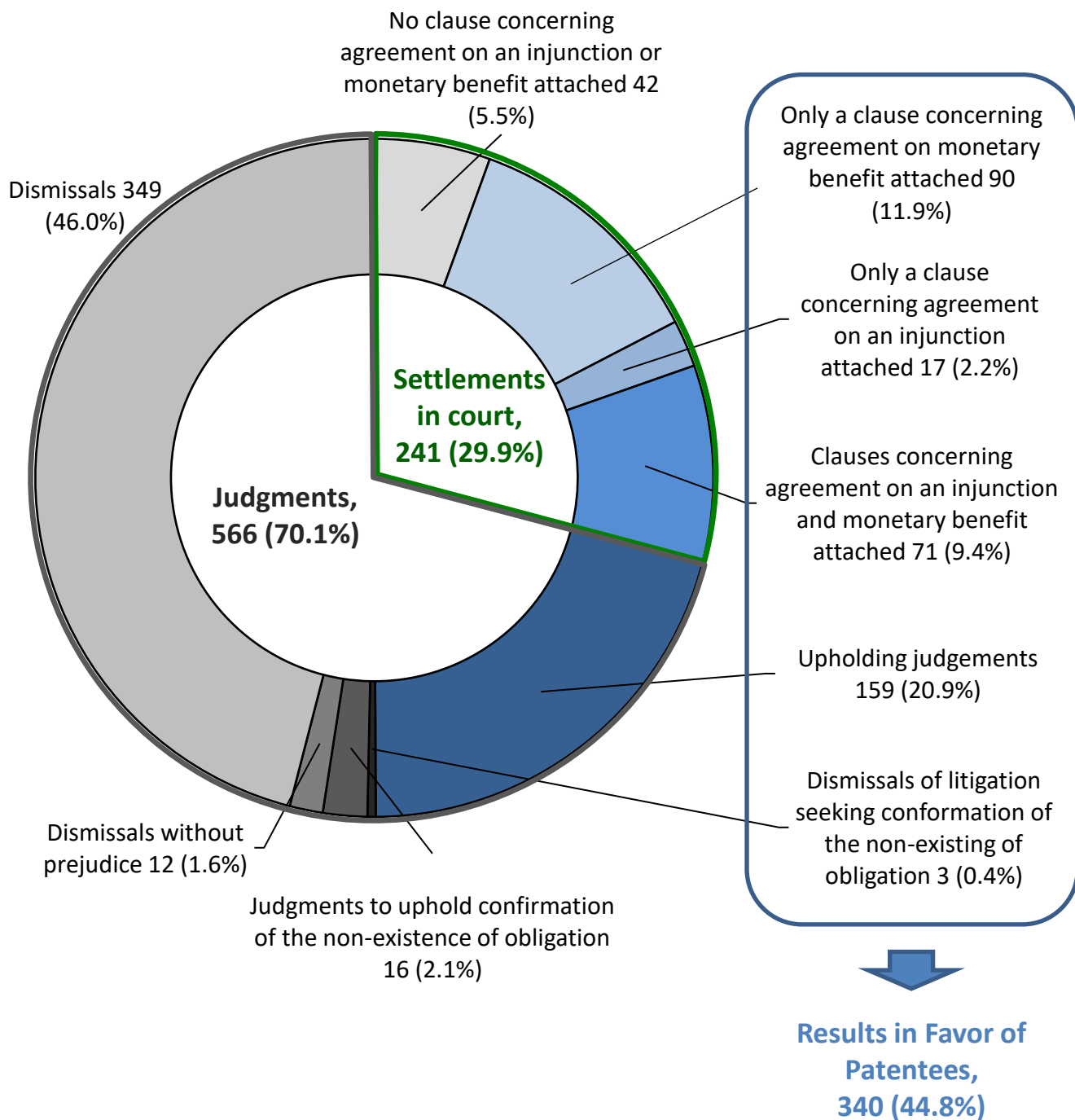


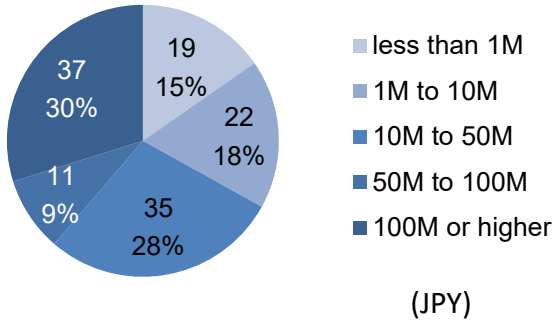
Table L1

	2014-2018	2014-2019	2014-2020	2014-2021	2014-2022	2014-2023	2015-2024
Results in favor of patentees	43.4%	44.6%	45.8%	45.8%	45.4%	45.0%	44.8%

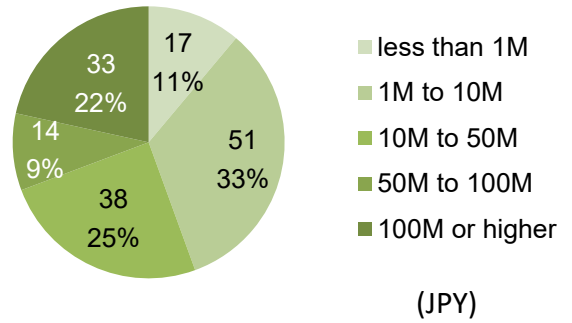
*1 Upholding judgments include judgments that partially uphold the claim.

Amounts Approved in Judgments and agreed to be paid in settlements in court in patent infringement cases (2015 to 2024)*¹

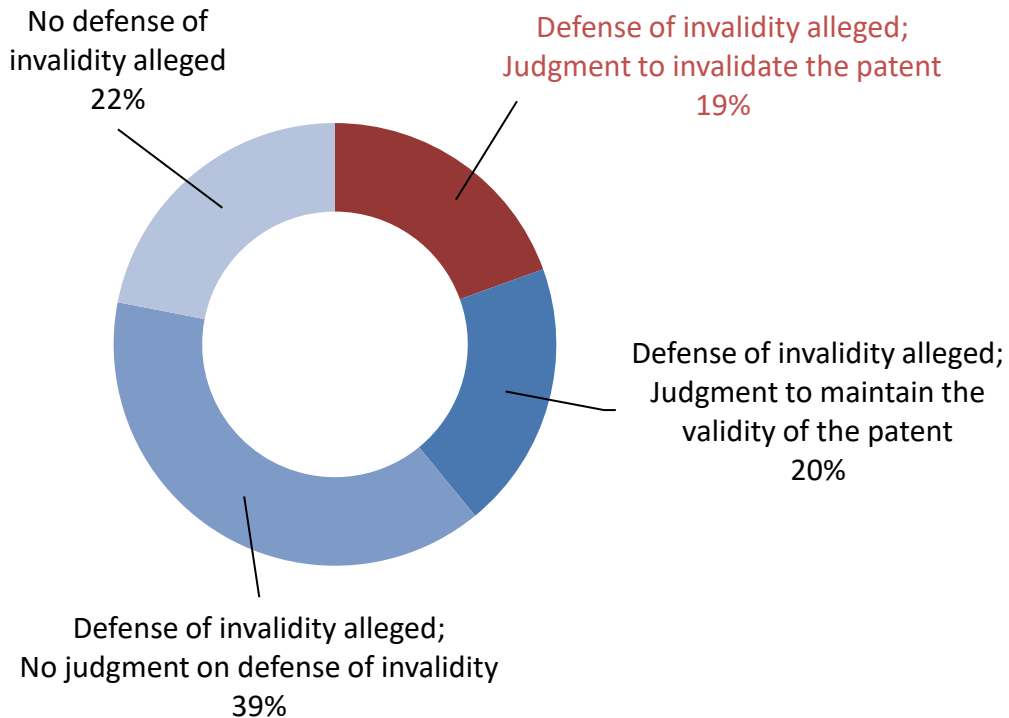
Graph L4-1: Number and proportion of amounts approved in judgments



Graph L4-2: Number and proportion of amounts agreed to be paid in settlements



Graph L5: Whether defense of invalidity was judged and how it was judged in patent infringement cases (2015 to 2024)*²



*1 Amounts related to attendant claims and court costs are not included.

*2 Each number indicated presents the total number of patent rights claimed in cases concluded by final judgments. For example, if two patent rights were claimed in one patent infringement case, the number of patent rights is counted as two.